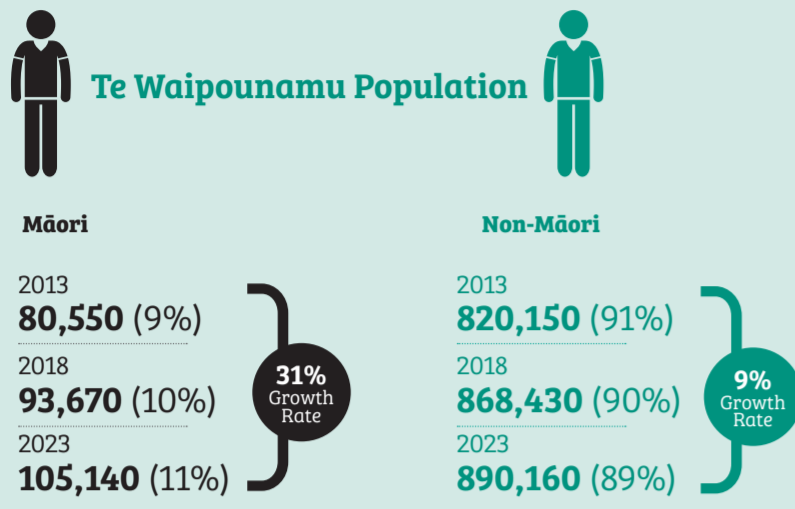


# Te Puni Kōkiri: Te Waipounamu Regional Profile 2017

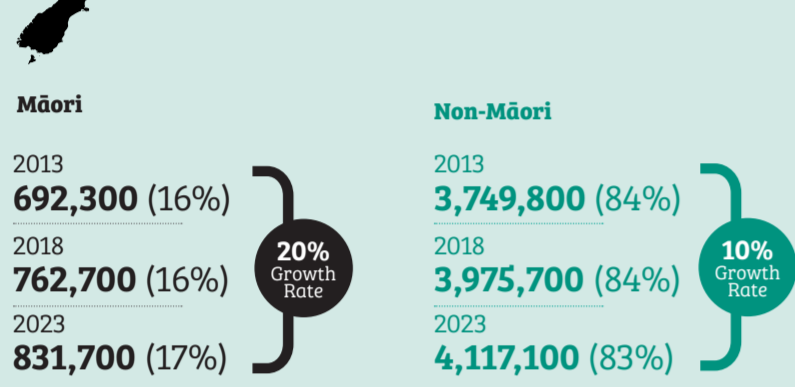
The Te Waipounamu region replicates the boundaries of Ngāi Tahu Whānui, the northern points are from Kahurangi Point on the West Coast to Te Parinui o Whiti (White Bluffs) near Kaikōura on the East Coast. The region includes the bulk of the South Island including Rakiura (Stewart Island).

## Demographics – Structure of Te Waipounamu Population 2013-2023

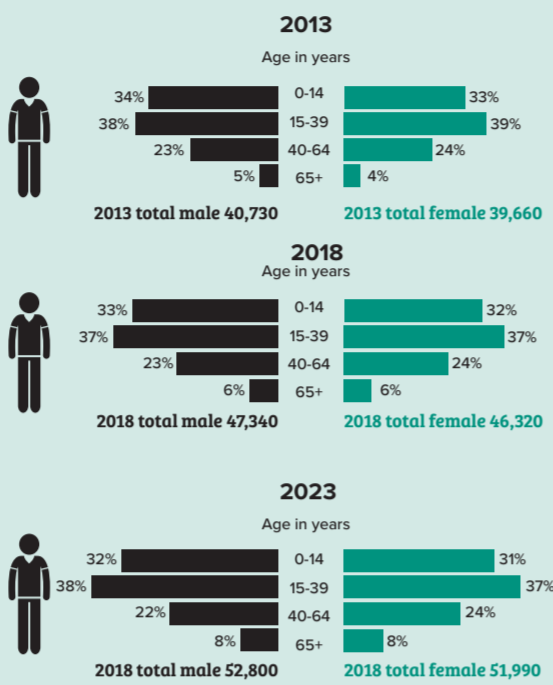
The Māori population will exceed 100,000 by 2023.



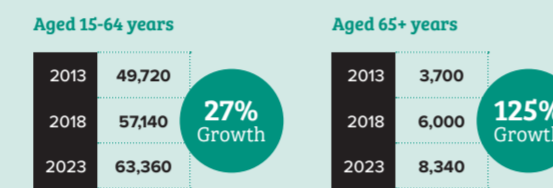
### Total New Zealand Population



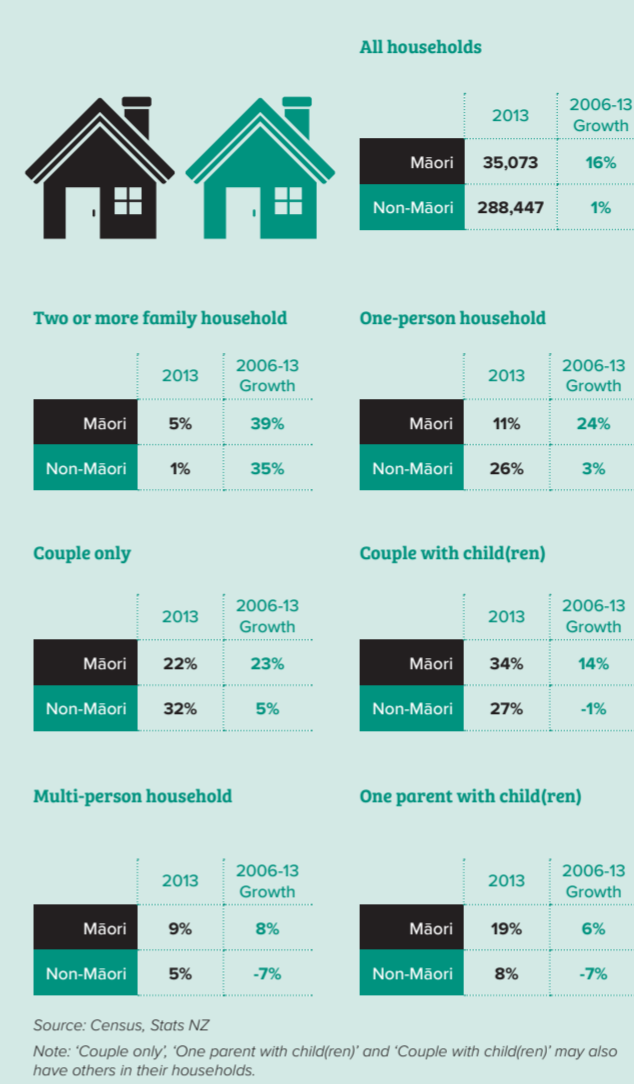
By 2023, the number of Māori aged 15 to 64 years will grow by 27%.



The number of Māori aged 65+ will more than double.

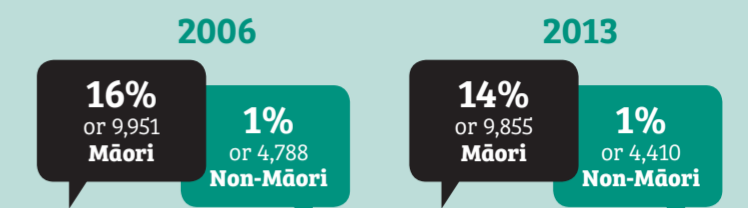


The number of Māori households has increased. The highest rate of growth was for households with two or more families.



## Whakapapa – te reo Māori and Connection to Iwi in Te Waipounamu

One in seven Māori can speak te reo Māori. This has declined slightly.



Source: Census, Statistics New Zealand

More Māori know their iwi affiliations.



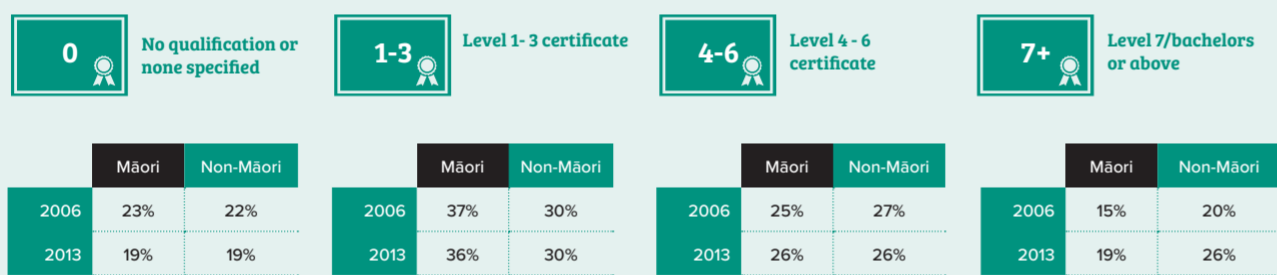
2006-2013 percentage change



Source: Census, Stats NZ

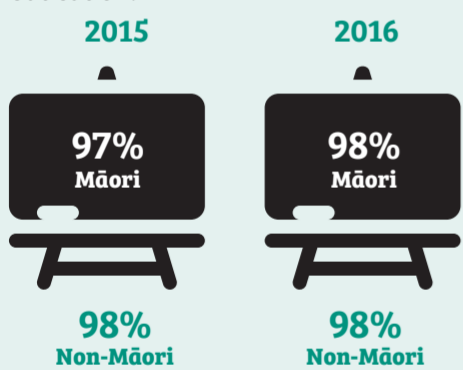
## Oranga – Whānau Well-Being & Whānau Housing in Te Waipounamu

More Māori households have higher qualifications at Level 7/Bachelors or above.



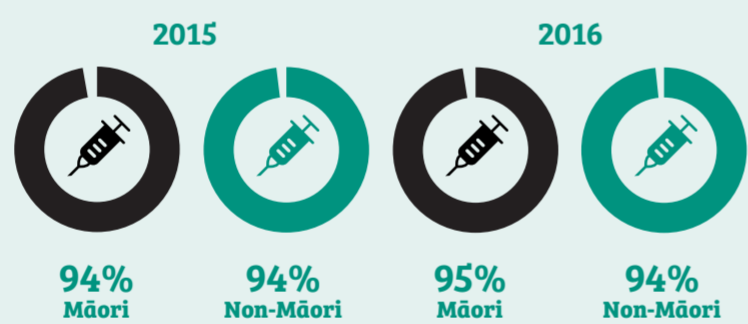
Source: Census, Stats NZ

Almost all tamariki Māori have participated in early childhood education.



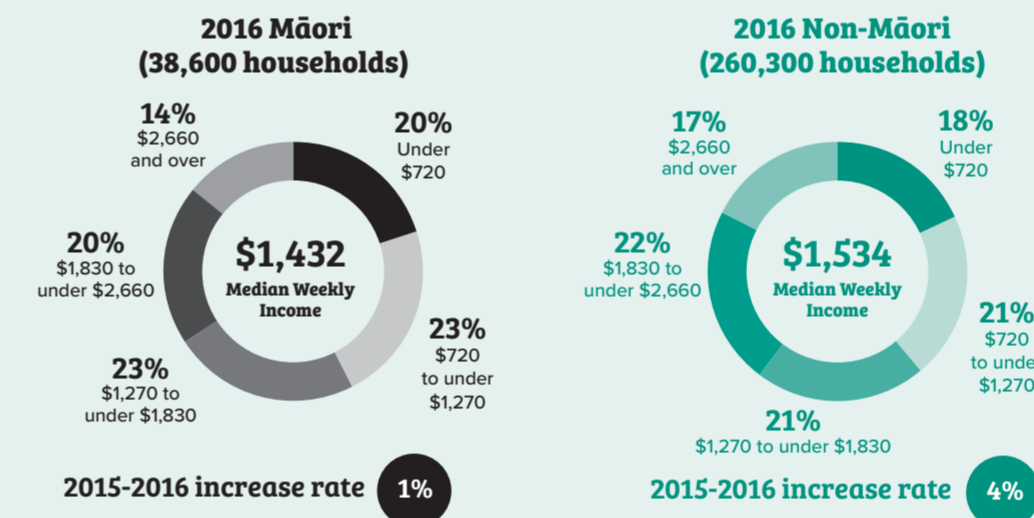
Source: Education Counts, Ministry of Education  
Notes: 1. The five-year Better Public Service (BPS) target was to increase participation in early childhood education to 98% by December 2016. 2. Year end December.

Most tamariki Māori are immunised.



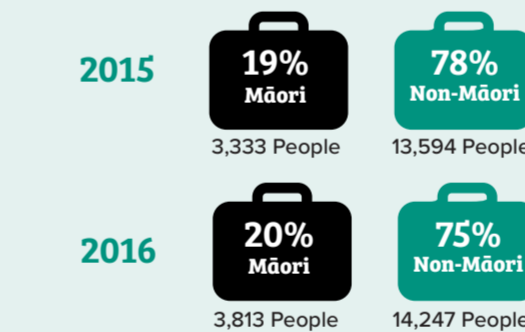
Source: National and DHB Immunisation Data, Ministry of Health  
Notes: 1. The five-year Better Public Service (BPS) target was to increase infant immunisation rates to achieve and maintain 95% of 8 month-olds fully immunised by 2014 & maintained to 2017. 2. Year end December

Māori household incomes have increased.



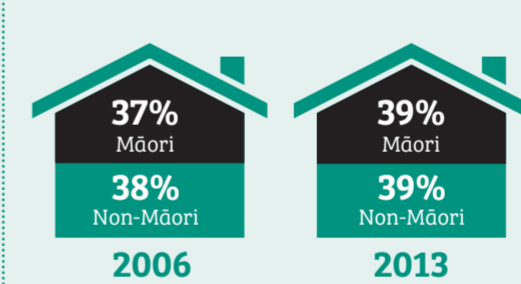
Source: New Zealand Income Survey Note: Year-end June.

The number of Māori receiving Jobseeker Support has increased.



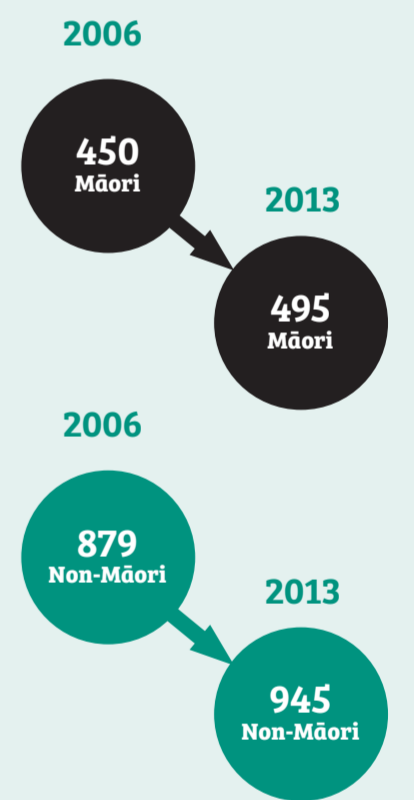
Source: Benefit fact sheets, Ministry of Social Development.  
Note: Year-end December

Over one-third of Māori rental households are under housing stress.



Source: Census, Stats NZ  
Note: Housing stress refers to a household paying more than 30% of their household income on rent.

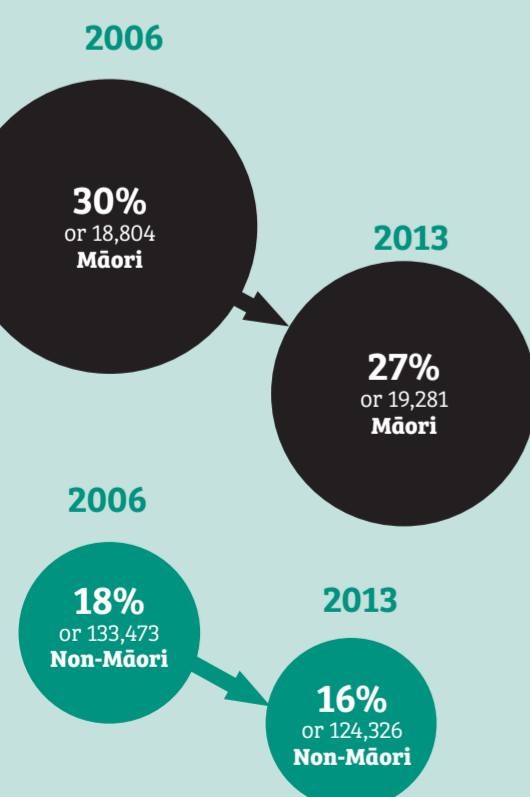
Slightly more Māori households are overcrowded



Source: Census, Stats NZ  
Notes: 1. Overcrowded refers to a household that needs more than two additional bedrooms. 2. Based on specific criteria relevant to the number, age and sex of people per bedroom.

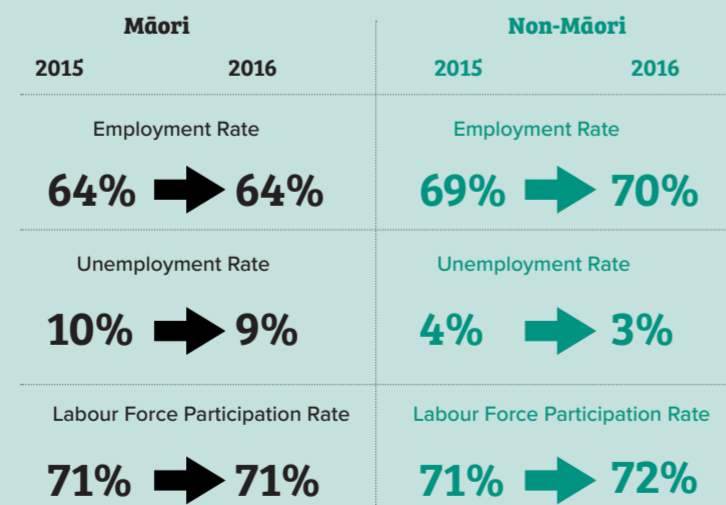
## Whairawa – Whenua & Whanaketanga in Te Waipounamu

Over one-quarter of Māori live in highly deprived areas.



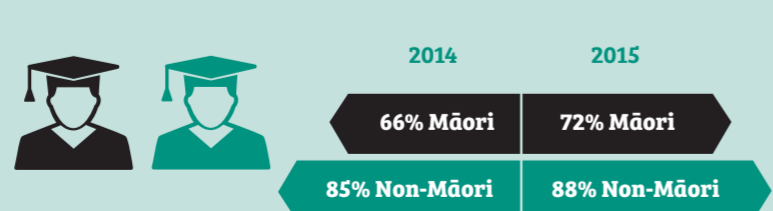
Source: Census, Stats NZ  
Note: The numbers are based on deprivation scales from 8 to 10.

Two-thirds of working age (15+) Māori are employed.



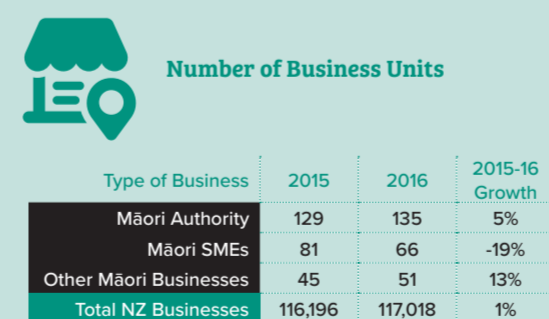
Source: Household Labour Force Survey, Stats NZ  
Note: Year end December

More 18-year-old Māori have a NCEA level 2 (or above) qualification.

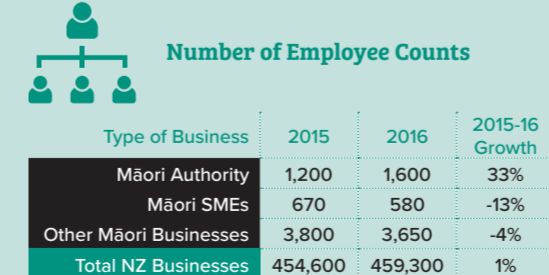


Source: Education Counts, Ministry of Education  
Note: The five-year Better Public Service (BPS) target was to achieve 85% of 18-year-olds receiving NCEA Level 2 or an equivalent qualification by 30 June 2017.

More Māori Authority and other Māori Businesses are operating in Te Waipounamu than Small- and Medium-sized Businesses.

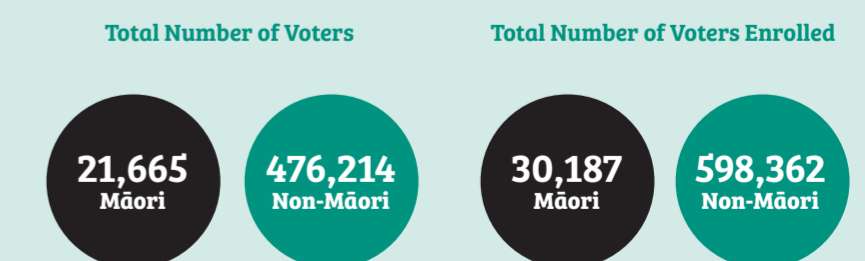
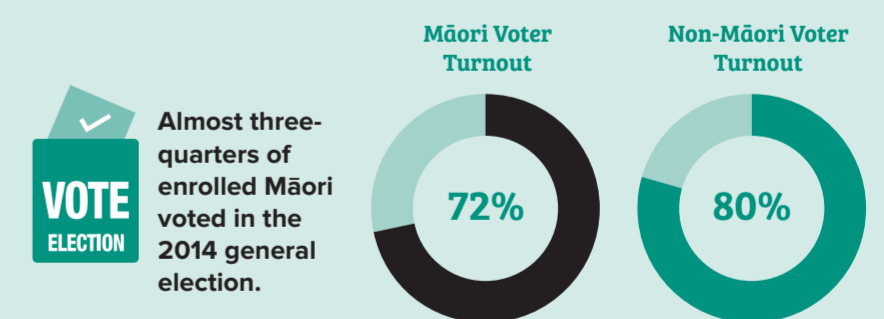


Māori businesses are employing slightly more people.



Source: New Zealand Business Demography Statistics, Stats NZ  
Notes: 1. These statistics are provisional and cover enterprises with greater than \$30,000 annual GST expenses or sales, or are GST exempt. 2. The type of Māori Business is defined in Te Puni Kōkiri 2016; other Māori businesses refer to the remainder.

## Whanaungatanga – Crown-Māori Relationships in Te Waipounamu



Source: Electoral Commission  
Note: These numbers are calculated by relevant electoral boundaries. However, the numbers are included Tasman region due to the constraint of data.