



Te Maihi Karauna

Tā te Karauna Rautaki mō te Whakarauoratanga
o te Reo Māori, i ngā tau 2018–2023

Te whakawhitinga kōrero, i a Here-turi-kōkā
ki a Mahuru, i te tau 2018

*Ko tōku reo tōku ohooho,
Ko tōku reo tōku māpihi maurea*

*My language is my awakening,
the object of my affection*

He mea tautoko nā:

'Kia ita!'
Te Taura Whiri i te Reo Māori
MĀORI LANGUAGE COMMISSION



 Te Māngai Pāho

MĀORI
TELEVISION



Te Tari Taiwhenua
Internal Affairs


MINISTRY OF EDUCATION
TE TĀHUHU O TE MĀTAURANGA

 Manatū
Taonga
Ministry
for Culture
& Heritage



Te Puni Kōkiri
MINISTRY OF MĀORI DEVELOPMENT

I tuhia e:

Te Puni Kōkiri
ISBN: 978-0-9951038-6-3
Here-turi-kōkā / August 2018

*He kōtiro Māori ki ASB Polyfest 2017, Tāmaki
Makaurau. Nā Teneya Te Whata te ata.*

Te Rārangi Kaupapa

Te kupu tōmua a te Minita	3
1. Te whakataki	5
2. Te ahunga ā-rautaki: Te āhua o anamata e pīrangi nei tātou	9
3. Ko te whakaūnga o te kaingākauria o te reo Māori: Ngā kaupapa matua hei mahi mā te Karauna	21
4. Te whakaū i te akonga o te reo Māori: Ngā kaupapa matua hei whakatutuki mā te Karauna	27
5. Te whakaū kia kitea, kia rangona, kia whakamahia hoki te reo Māori: He kaupapa matua hei mahi mā te Karauna	32
6. Te whakatinana me te aroturuki	37
7. Te huarahi hei urupare	38
Te Āpitianga A: Ngā ariā hei tūāpapa mō te rautaki	39
Te Āpitianga B: He rārangi kupu me ngā tikanga	41
Te Rārangi Whakaahua	43



E koa ana te ngākau ki te tāpae i tēnei tuhinga hukihuki o te Maihi Karauna – tā te Karauna rautaki hou mō te whakarauoratanga o te reo.

Te kupu tōmua a te Minita

Ko te tiakitanga me te whakatairangatanga o te reo me ngā tikanga Māori hei taonga he kaupapa matua e angitu ai tā Aotearoa tauawhi i tōna anō kanorau me te pātuitanga i tīmata ai mā roto i Te Tiriti o Waitangi.

I te tau 2040, ka whakanui tātou i te 200 tau mai i te waitohutanga o taua Tiriti rā. Ka noho ia hei tino tohu e motuhenga ai te whakanuia ōna mēnā rawa ka ora, ka ngaruru hoki ngā reo me ngā ahurea o ngā hoa e rua o te tiriti.

Heoi anō, e mārama ana, ki te kore tātou e whai i tētahi huarahi hou e tiakina ai, e whakarauoratia ai te reo Māori, ka wheroku haere tonu tō tātou reo.

He nui te tautoko kia whāia tētahi huarahi hou. I waenga i ngā hapori puta noa i Aotearoa, e tipu haere ana te hiahia ki te ako, ki te mōhio, ki te kōrero hoki i te reo Māori. Nā ngā kokenga i te ao hangarau he huarahi hou ka takoto hei tautoko i te ako me te whanaketanga. Kei reira hoki ōna kaitaunaki tūkaha o te reo Māori mā rātou tātou e tautoko, e wero hoki.

Ko te wero ki a tātou, ko te urupare ki tēnei āhuratanga ki ngā whakautu e hāngai ana, e whai take ana, e atamai ana hoki. He whakautu mā reira e kounga ai te reo e whakaakona ana, e akona ana hoki, ā, i tua atu i tērā, mā reira anō e whakatenatena, e tautoko ngā wāhi kia ngaruru ai taua reo rā.

Kāore au e pīrangī ana kia noho ko te reo Māori hei reo ka rangona e tātou i te marae me ngā wāhi ōkawa anake. E pīrangī ana au ki te rongo i ngā tamariki ka ako i te reo Māori i te kura e kōrero Māori ana ki a rātou anō ka tākaro ana rātou, e pīrangī ana au kia rangona te reo i ngā papa tākaro me ngā huinga toa, e pīrangī ana au ki te noho ki te wāhi kai, ahakoa ko hea, i Aotearoa me te tono i taku kai i te reo Māori.

Kei te āhua tawhiti tonu tātou i tēnei wawata, engari ka rere ana ki tawāhi, ka kitea te horapa me te māori noa o ngā hapori reo-tini. Ā, mehemea he rite koe ki a au, ka mahara koe ki te mīharo o te ao mēnā he tokomaha ake ngā tāngata e kōrero Māori ana i Aotearoa, ā, kua tino whenua reorua tō tātou.

Ko te Maihi Karauna tā mātou mahere mō tā te Karauna mahi e tutuki ai taua whāinga. Ko tāna he tautoko i te Maihi Māori i hangaia ai e Te Mātāwai e arotahi nei ki te whānau me te hapori.

E māia ana, e whakatara ana hoki ēnei rautaki. Heoi anō, he kaupapa tēnei e āritarita nei au kia tauawhitia e te tokomaha o Aotearoa nō ngā momo ao katoa.

E takoto ana i te Upoko Tuawhiti o tēnei tuhinga te huarahi e urupare ai koe i mua i te 28 o Mahuru, i te tau 2018.

Ngā mihi nui ki a koutou katoa.

Mahue: Hōnore Nanaia Mahuta, Te Minita Whanaketanga Māori.



1. Te whakataki

1. E motuhake ana te reo Māori ki Aotearoa. Koirā tētahi o ētahi reo whai mana ā-ture, ā, he wāhanga ahurei ia nō tō tātou whenua e wehe ai tātou i ētahi atu o te ao. He take mātuatua kia āta mahi tahi te kāwanatanga, mā ngā tāngata katoa o Aotearoa, me ngā iwi me ngāi Māori kia tiakina ai, kia whakarauoratia ai te taonga nei mā ngā uri whakaheke.
2. Arā kē ngā piki me ngā heke o te reo Māori ā mohoa nei. I te haurua tuatahi o te rautau tekau mā iwa, koia te reo tuatahi o te nuinga o te hunga e noho ana ki Aotearoa, ā, i tua atu i te Māori, i mōhiohia hoki e ngā tauīwi. Nō te taenga ki te haurua tuarua o te rautau rua tekau, kua tata huri kōaro kē tēnei āhuatanga, inā hoki, kua noho ko te reo Pākehā hei reo mō ia rā, ā, he pēnei hoki te ahunga o ētahi atu reo i ētahi wāhi o te ao. Hāunga tēnei, kua tino manawaroa te reo Māori, ā, kua mau tonu i roto i ngā kāinga me ngā hapori, i roto hoki i ngā kaupapa nā te Māori tonu i kōkiri, pēnei i te kaupapa o te Kōhanga Reo.
3. Kua tae tātou ki tētahi wāhanga mōrearea i te ara o te reo Māori. I tētahi taha, e tipu ana te matenui o ngā tāngata mai i ngā iwi katoa, i ngā momo ao katoa, ki te kaingākau ki te reo, ā, ki te ako, ki te whakamahi hoki i te reo. E āta ū ana ngā hapori kōrero Māori puta noa i te motu ki ngā mahi. Arā hoki ōna kaipāpāho auraki, ngā takitahi me ngā pakihi e karawhiu mahi ana.
4. Manohi anō, ko te reo Māori kei te rārangi tonu o ngā reo e noho whakaraerae ana i tā UNESCO Atlas of Languages. E noho pateko tonu ana te wehenga o ngā Māori e matatau ana ki tōna tekau mā tahi ōrau i waenga i te tau 2001 ki te tau 2013, otirā, i te āhua nei, he kaumātua ake tēnei rōpū i ērā atu o te taupori kaikōrero.
5. E heke ana te ōrau o ngā Māori e kaha ana ki te ū ki te reo Māori i roto i ngā kōrero o ia rā. Mehemea ka kitea kei te haere tonu tēnei āhuatanga atu i te wā ka wātea mai ngā raraunga o te Tatauranga o te tau 2018, e kore tātou e rangirua ki te totoa o ngā karawhiunga mahi me whai.
6. He nui tonu tā te Karauna tuku pūtea, tāna tautoko hoki hei hāpai i ngā kaupapa reo Māori mai i te tekau tau 1980. Heoi anō, i kōrero hoki te Karauna, i roto i Te Ture mō te Reo Māori, mō ngā pānga kino o āna kaupapa here me āna mahi o mua nā reira, i ngā whakatipuranga e hia nei, i kore ai e tiakina, e āta whakatairangahia hoki te reo Māori, i āta whakatenatenahia hoki tōna whakamahinga e ngā iwi me ngāi Māori.
7. Ināianei, e āta ū ana te Karauna ki te mahi tahi me ngā iwi, me ngāi Māori ki te tiaki tonu, ki te whakatairanga tonu i tēnei taonga, i te reo Māori, mā ngā uri whakaheke.

Mahue: Te Panekiretanga o Te Reo graduation (the Institute of Excellence in Māori Language), Te Wānanga o Aotearoa, 2018. Rawhitiroa Photography.

Tā tēnei rautaki mahi

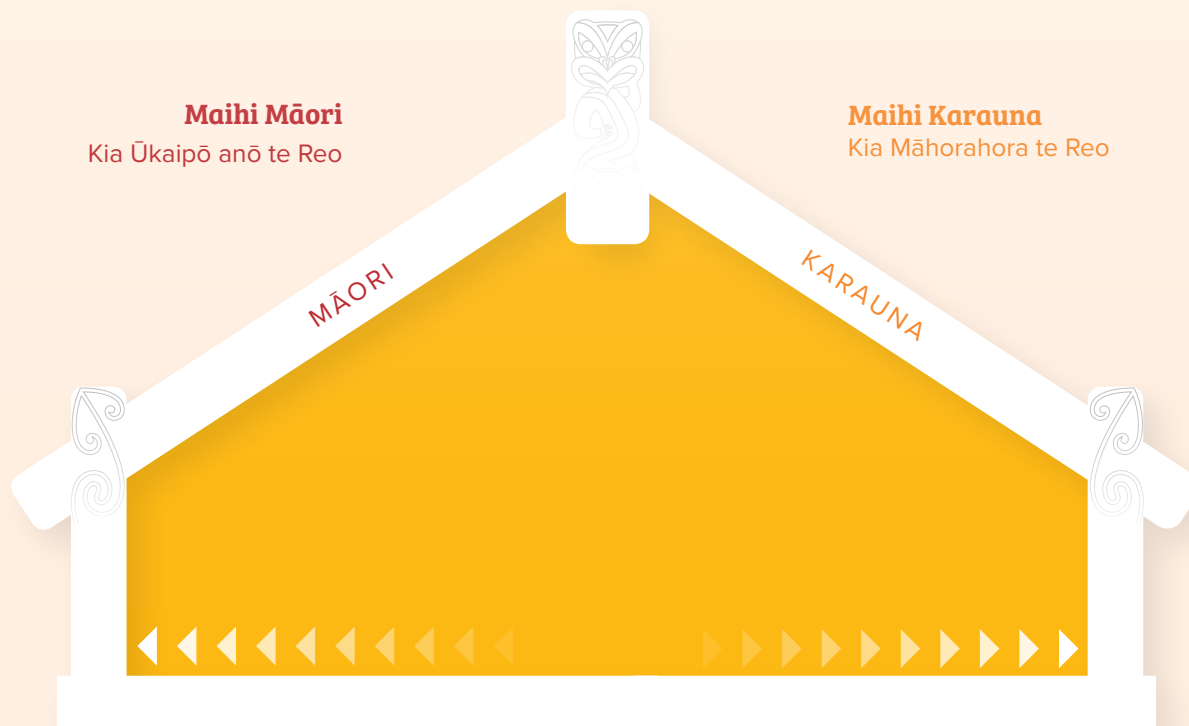
8. E takoto ana i tēnei rautaki Maihi Karauna tētahi whāinga tāhuhu māia mō te reo Māori ki anamata, ā, ka takoto hoki ngā mahi ka mātua whāia e te kāwanatanga hei ngā tau e rima e tū mai nei e koke ai ki tēnei whāinga tāhuhu.
9. He kaupapa mahi tahi tēnei hei whai mā te whānuitanga o ngā pokapū kāwanatanga me ngā tari o ngā minita. Nā konei me mātua kaha ake, me mātua atamai ake hoki ngā pokapū o te rāngai tūmatanui ki te mahi – mā te whakanui ake i ngā rauemi e tukuna ana ki ētahi wāhi mō te whakarauoratanga o te reo Māori, mā te āta mahi kia whai hua nui ake i ētahi atu. E takoto kē ana tētahi tūāpapa mārō mō ngā ratonga me ngā hōtaka hei tūranga mō ētahi kē atu ka hangaia.
10. He nui ngā āheinga a te Kāwanatanga e whai pānga ana ki ngā ara e whakamahi ai, e ako ai, e kaingākau ai ngā tāngata o Aotearoa ki te reo Māori. E tata ana ki te katoa o ngā tāngata o Aotearoa e whiwhi ana i ngā ratonga ka tukuna e ia, ā, ko ētahi ko:
 - ngā kaupapa here, ngā haumitanga ki te whakatairangatanga o ngā toi, o ngā ahurea me te tuku ihotanga e tautoko ana i te whakamahinga o te reo, e miramira ana hoki i te tūnga ahurei o te reo i ngā huinga ā-motu
 - ngā haumitanga ki te ao pāpāho reo Māori, tae atu ki te reo irirangi, ki te pouaka whakaata me ngā ara pāpāho hou
 - te reo Māori i roto i te mātauranga – tae atu ki ngā kura reo Māori, ki ngā kura reo Pākehā, ki ngā kōhanga reo, ki ngā kura kōhungahunga me ngā kura mātauranga pakeke
- te mahere reo me ngā mahi hei whakapakari ake i te kaha o te rāngai kāwanatanga e pā ana ki te reo Māori
- ngā karawhiunga mahi i waenga i te motu e whai take ai ngā hua ā-pāpori, ā-ōhanga, ā-whanaketanga taiao hoki ka puta i te reo me ngā tikanga Māori
11. Heoi anō, ahakoa ngā tūranga o nāia tonu nei, he āhua nui tonu te wāhi kia tipu ai ngā wawata me ngā mahi.

Te Whare o te Reo Mauri Ora: Te pātuitanga i waenga i te Karauna me te Māori

12. He rerekē tēnei rautaki i ētahi atu o mua. Koinei te rautaki tuatahi a te kāwanatanga i oti ai i raro i Te Ture mō te Reo Māori 2016. E whakaae ana te ture ko ngā iwi me ngāi Māori ngā kaitiaki o te reo Māori, ā, e kaha ana hoki te Karauna ki te whakaterere whakamua i te whakarauoratanga o te reo Māori mā te whakatairanga i ngā whāinga ā-rautaki i te whānuitanga o te hapori o Aotearoa.
13. Nō reira, me āta mahi tahi rawa ngā hunga e rua ki te whakatairanga i te mōhiotanga me te whakamahinga o te reo Māori. Ka whakapuakina tēnei pātuitanga ki te huahuatau o Te Whare o te Reo Mauri Ora. Ko ngā taha e rua o te pātuitanga e whakaaturia ana i ngā maihi kei ngā taha e rua o te whare. Ka tūtaki rāua ki te koruru, kei runga o te whare, e whakaatu nei i te whāinga koruru mō te reo Māori. Ko te whāinga koruru e kī nei “kia mauri ora te reo”. Kei te whakaahua 1 o raro nei e whakaaturia ana.

14. Nā Te Ture mō te Reo Māori 2016 i whakatūria ai ko Te Mātāwai hei māngai mō ngā iwi, mō ngā hapū, mō ngā whānau, mō ngāi Māori me ngā hāpori i tēnei hononga, e whakaaturia ana ki te taha mauī o te whare. Kei te taha matau ko te Karauna. E tautoko ana tēnā taha o te whare i tērā atu taha mō te reo Māori te take.
15. I raro i te Ture, me tuku rawa te Minita Whanaketanga Māori i tētahi rautaki Maihi Karauna mā te Karauna, ā, me tuku rawa a Te Mātāwai i tētahi rautaki Maihi Māori. He take nui kia tautoko tētahi tuhinga i tērā atu.
16. He ōrite te hiranga o ngā mahi a te Karauna me te Māori e tutuki ai te whāinga koruru o ngā rautaki e rua e kī nei “kia mauri ora te reo”. Ahakoa te noho motuhake o tētahi rautaki i tērā atu, e pā ana Te Whare o te Reo Mauri Ora ki te pātuitanga. Mā te whakakotahi rawa i ngā karawhiunga mahi, mā te ruruku hoki i te whakamahinga o ngā rauemi e whakarauoratia ai te reo Māori.
17. E mātua arotahi ana te Maihi Karauna ki te kaupapa nui – te waihanga i ngā ritenga e tika ana puta noa i te kāwanatanga me te hāpori o Aotearoa e pā ana ki te whakarauoratanga o te reo Māori. E arotahi kē ana te Maihi Māori ki ngā pā harakeke – ki ngā hāpori, ki ngā kāinga me ngā whānau. Ko tā tētahi he tautoko i tētahi atu, ā, me āta mahi tahi te Karauna me Te Mātāwai kia tūhonohia ai ēnei karawhiunga mahi, e whai hua ai ki ngā taha e rua.
18. Me ngātahi rawa ngā mahi o mua me ngā mahi o nāianei. Hei tauria, mā te whanaketanga o ngā tāone iti reorua me ngā tāone nui reorua e puta ai ētahi huarahi e wātea ana mō te mahi ngātahi. Waihoki, mā te ngātahi o te aroturuki e āwhina kia ū te kotahi o te karawhiu, o te rurukutanga hoki.

Te whakaahua 1. Te Whare o te Reo Mauri Ora





*Ko tētahi o ngā wāhanga matua o te whāinga tāhuhu
anamata e noho ai te reo Māori hei wāhanga māori
tonu i te ao o ia rā, ko te tuku ihotanga o te reo i tētahi
whakatipuranga ki tētahi. [kāore te puna e whakaaturia]*

2. Te ahunga ā-rautaki: Te āhua o anamata e pīrangi nei tātou

Kia mauri ora te reo – He whāinga koruru pae tawhiti, he whāinga koruru ngātahi

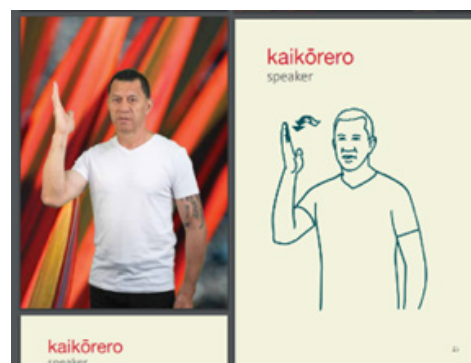
19. He take nui whakaharahara kia mahi ngātahi te Maihi Karauna me te Maihi Māori. Nā reira, e kotahi tonu ana tā rāua whāinga koruru, arā, **Kia Mauri Ora te Reo**. Ka kitea i konei, ko te reo Māori he reo e ora ana. Ka eke ki tōna āhua o te “mauri ora” ā te wā ka noho ko te reo Māori hei reo tuatahi mō ngā whānau mā roto i te tuku ihotanga i tēnā whakatipuranga ki tēnā whakatipuranga.
20. Kia tutuki tēnei whāinga koruru, i tōna tikanga:
- **Kia rere:** E tohaina ana te reo, ā, e whakamahia ana i ngā ao o ia rā.
 - **Kia tika:** E hāngai ana te reo Māori ki ōna horopaki e tika ana.
 - **Kia Māori:** He reo tuatahi te reo Māori, ā, e tohaina ana.

Kia māhorahora te reo – I ngā rā katoa, i ngā tāngata katoa, mā ngā huarahi katoa, ki ngā wāhi katoa hoki

21. Ko te reo Māori tētahi wāhanga taketake o te tuakiritanga ā-motu o Aotearoa, hei kaingākoutanga, hei whakamahinga mā Aotearoa whānui. Ko te whāinga **Kia Māhorahora te Reo** te whāinga tāhuhu a te Karauna, e whakaatu nei i tāna mahi kia ū ngā tāngata o Aotearoa ki te whakamahi, ki te ako i te reo, kia kaingākau hoki ki te reo Māori. Kia tutuki te whāinga tāhuhu nei, i tōna tikanga ka noho ko te

reo Māori hei wāhanga māori noa i ō ngā tāngata o Aotearoa whānui ao o ia rā e whakamahia nei te reo e ngā tāngata katoa, i ngā rā katoa, mā ngā huarahi katoa, ki ngā wāhi katoa hoki.

22. Me mōhio ngā kaikōrero Māori kei te kaingākau te hapori whānui ki te reo Māori, ā, he huarahi e wātea ana i ia rā e whakamahia ai i te hapori whānui. E tino mōrearea ana te noho a ngā hapori kōrero Māori kei mau ki ō rātou kāinga taratahi i tētahi ao kōrero Pākehā e whānui ake ana huri noa.
23. Ko tētahi wero matua i tēnei rautaki ko tērā e kī nei me pāhekoheko rawa ngā karawhiunga mahi whakarauora i te reo Māori ki te whānuitanga ake o ngā tāngata o Aotearoa, engari me mau tonu rawa te mana o te reo Māori, me tōna kaitiakitanga i ngā iwi me ngāi Māori. Ā tōna wā, e matapaetia ana ka whai whakapapa atu tētahi wāhanga nui ake o ngāi Māori ki tētahi atu karangatanga ā-iwi, ki ētahi atu rānei. Me maha ake ngā kāinga Māori e puta ai te tuku ihotanga i tēnā whakatipuranga ki tēnā whakatipuranga e whai wāhi rā hoki ngā whanaunga tauiwi.
24. Ko te tikanga o te whāinga tāhuhu, ko ngā karawhiunga mahi a te Karauna me whakarite kia whai wāhi mai te whānuitanga, ā, kia kaua e



He ata nā Deaf Aotearoa mai i te puka o “Let’s Talk – 25 Signs for Māori Concepts”.



whakatū tauārai hei aukati i te whai wāhitanga. Hei tauira, ka hāngai ngā kaupapa ā-pāpāho, ā-tahiko, ā-mātauranga hoki i te pāhekohekotanga ki ērā e manauhea ana, ā, tērā pea ka hono atu ki ngā kaupapa ā-hapori, pēnei i tā te hapori Turi Māori whakawhanake i ngā ariā Māori i te Reo Rotarota ki Aotearoa.

25. He take nui whakaharahara rawa atu te whakanui ake i ngā wāhi me te whakawātea i ngā huarahi (ngā takiwā) e whakamahia ai te reo. E kaha ai te ora o te reo, me whakamahi, me tautoko e ngā tāngata puta noa i Aotearoa. He wāhanga nui hoki i te whāinga tāhuhu te whakarite kia noho ko te reo Māori hei reo tuatahi mō te Māori i te kura, i ō rātou kāinga me ngā hapori.



‘Ō Mātou Reo’, He rōpū taunaki wāhine Ihirama i te Hapori reo Māori. He ata nā Sylvie Dickson.

Ngā whāinga heke o te Maihi Karauna

26. I tēnei whāinga tāhuhu ngā whāinga heke e toru. Koinei tā mātou e whai nei kia puta i ngā karawhiunga mahi i te whakatipuranga kotahi. Anei, e whai ake nei.

- **TE AOTEAROTANGA** – e **kaingākautia** ana te reo Māori e Aotearoa whānui hei wāhanga matua mō te tuakiritanga ā-motu.

E takoto ana i te reo Māori tētahi huarahi e wātea ana e kotahi ai te tuakiritanga ā-motu, ā, he take nui kia whakaatanga tēnei i ngā kaupapa mahi a te kāwanatanga.¹

He mea nui hoki te whakapakari i te kaingākautanga a te motu ki te reo Māori e puta ai ētahi ritenga whai painga ā-pāpori mō tōna whakarauoratanga.

- **TE MĀTAURANGA** – Kua piki ake te **mōhio**, ngā **pūkenga** me te **matatau** o Aotearoa whānui ki te reo Māori.

He kaha ngā hua kei te Karauna e whakaawe ai ia i tēnei whāinga heke, pēnei i te kawenga o te pūnaha mātauranga ā-ture.

- **TE HONONGA** – Kua wātea a Aotearoa ki te **pāhekoheko** atu ki te reo Māori.

Me wātea ngā taiao e kōrerotia ai te reo Māori ki a Aotearoa Whānui e whakamahia ai, e kitea ai, e rangona ai, e pānuitia ai hoki te reo Māori hei reo ora. E kaha ana te Karauna ki te whakaawe i tēnei mā ngā momo huarahi, pēnei i te whakarite kia wātea ake ngā ratonga tūmatanui i te reo Māori, i te tautoko hoki i te whanaketanga o ngā tāone iti reorua me ngā tāone nui reorua.

¹ Te Rōpū Tohutohu Reo Māori (2015) Te Whare o Te Reo Mauriora: Pūrongo ki te Minita Whanaketanga Māori.a

*Mahue: 10 Te Rangatū mō te Wiki o te Reo Māori, 2017.
He ata nā Te Taura Whiri i te reo Māori.*

Ngā whāinga rongomaioiro e toru

27. Ko te whāinga rongomaioiro, he whāinga tauaki e uruhi ana, e whai ana kia kotahi ngā karawhiunga mahi a ngā momo whakahaere me ngā rōpū rerekē i te roanga o tētahi wā pae tawhiti. Māna e whakaatu tētahi whakakitenga ki te anamata māna rā e whakapakari kia nui ake ai te karawhiunga mahi, te rurukutanga me te whakahoutanga e koke ai ngā karawhiunga mahi a te kāwanatanga ki tua atu o te āhua o ngā kaupapa mahi o nāianei.
28. E tautuhia ana i tēnei rautaki ngā whāinga rongomaioiro e toru e kōrero nei mō ngā wāhanga nui whakaharahara o ngā whāinga heke e toru. E whakamārama ana ngā whāinga i te angitu i te tau 2040 – tētahi whakatipuranga atu i tēnei wā, te huritau 200 hoki o Te Tiriti o Waitangi. Ka whāia te angitu ā-pae tata, ā-pae waenga hoki mā tētahi huinga ritenga e hono ana ki ngā kaupapa matua hei mahinga mā te Karauna.

Te Whāinga Rongomaioiro 1: Tae rawa ake ki te tau 2040, e kaingākaitia ana te reo Māori e Aotearoa hei wāhanga matua mō te tuakiritanga ā-motu

29. E whai ana te whāinga rongomaioiro tuatahi kia tū te reo Māori hei wāhanga matua mō te tuakiritanga ā-motu e ai ki ngā whakaaro o te motu.
30. Kua kohia, i mua, he raraunga ā-motu e pā ana ki te uaratanga i whakatauria atu ai e ngā tāngata o Aotearoa ki te reo Māori. E ai ki ētahi ritenga, e teitei kē ana te uara e whakatauria atu nei ki te reo Māori. Ka whai wāhi atu ki ēnei raraunga ko ēnei:
 - I te tau 2009, e 81 ōrau o ngā tauwiwi, e 91 ōrau o ngā Māori i whakaae kia whakatenatena te Kāwanatanga i te whakamahinga o te reo Māori i ngā kaupapa ōkawa, pēnei i ngā pōwhiri i ngā rangatira



Kua whakatauria tētahi whāinga kia noho te reo Māori hei wāhanga matua mō te tuakiri o ngā tāngata katoa o Aotearoa.

- I te tau 2009, e 73 ōrau o ngā tauwiwi, e 70 ōrau o ngā Māori i whakaae ko te ahurea Māori he wāhanga nō ngā tāngata katoa, ahakoa ō rātou whakapapa.²
- I tētahi uiui i te tau 2015, kua tata ki te toru te whakareatanga ake o ngā tāngata o Aotearoa e tautoko ana i te reo Māori i roto i ngā kura i ērā e whakahē ana.³

31. Ahakoa e kore rawa pea e kitea i ēnei uiui te whakaaetanga a te katoa puta noa i te taupori, i tōna tikanga ka puta i te angitu o te whakatinanatanga o te Maihi Karauna te piki haeretanga o ngā tatauranga. Mā ngā āpiha e whakatewhatewha tētahi uiui ā-motu hou, ngā whakawhānuitanga rānei ki ngā uiui kua puta kē, e kapohia ai ngā kōrero tautoko i te reo Māori hei wāhanga matua mō te tuakiritanga ā-motu.

Te Whāinga Rongomaioro 2: Tae rawa ake ki te tau 2040, kua kotahi miriona ngā tāngata o Aotearoa e taea ana e rātou te kōrero Māori ki tētahi taumata kāore i raro iho mai i te mōhiotanga taketake

32. Ko te whāinga rongomaioro tuarua e whai ana kia tae rawa ake ki te tau 2040, kotahi miriona ngā tāngata o Aotearoa e taea ana e rātou te kōrero Māori ki tētahi taumata kāore i raro iho mai i te mōhiotanga taketake. Ina tutuki, kātahi te panonitanga nui ko tēnei i te ahunga o te reo Māori ki Aotearoa.



Ka takoto tētahi tūāpapa mārō mō te tipuranga o te reo Māori hei anamata i te tokomaha ake o ngā tāngata o Aotearoa e kōrero Māori ana ki tōna taumata taketake. He whakaahua nā Adrian Heke.

33. Kua kohia he raraunga ā-motu mō ngā taumata o te matatau ki te reo Māori i te tau 2001 me te tau 2013.⁴ I ēnei uiui e rua, i whakahāngaitia e ngā kaiurupare tō rātou matatau ki tētahi taune e rima nei ōna paenga:

5 = Ka tata pau i a au ngā mea katoa te kōrero i te reo Māori

4 = Ka taea e au ngā mea maha te kōrero i te reo Māori

3 = E taea ana e au ētahi mea te kōrero i te reo Māori – tērā tonu, he rite ki te taumata i inea ai i te Tatauranga Aotearoa

2 = E taea noa ihotia ana e au ngā mea māmā/taketake te kōrero i te reo Māori

1 = kāore i te nui ake i ngā kupu me ngā kīanga torutoru.

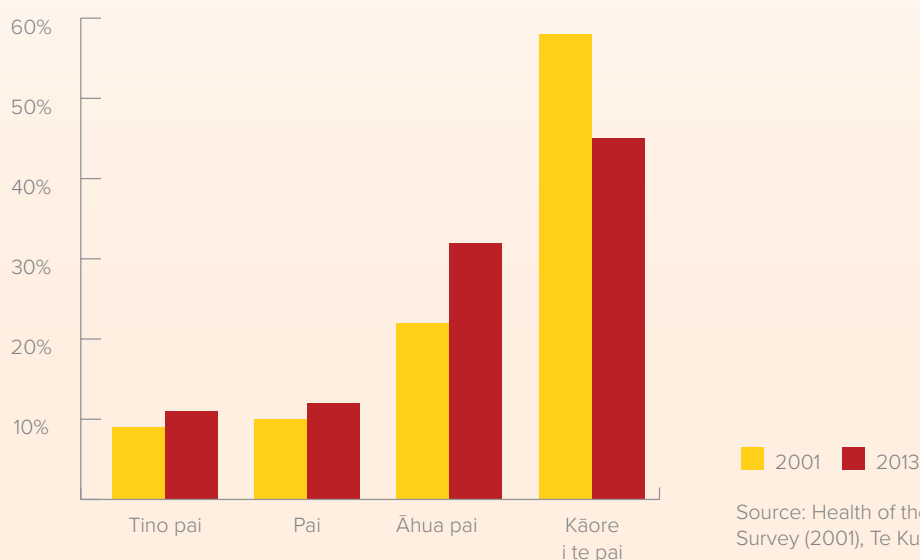
2 Te Puni Kōkiri (2010). 2009 Survey of Attitudes, Values and Beliefs Towards the Māori Language.

3 Matika, C. M. (2016). Support for Te Reo Māori in Aotearoa, 2015. NZAVS Policy Brief, 8.

4 Te Ora o te Reo Māori i te tau 2001 me Te Kupenga i te tau 2013.

34. Kei roto i te kōrero mō ngā mea māmā, mō ngā mea taketake rānei ngā take pēnei i te kōrero mō te whānau, mō te huarere, mō te tono hoki i te kai me te inu.⁵ Mā te kohi i tētahi rau takitini kōrero i te reo taketake e takoto ai tētahi tūāpapa kia tipu ai hei anamata, kia whai wāhi atu ai hoki ētahi ki ngā kaupapa reo Māori e kōkiritia ana e te hapori.
35. E matapaetia ana i roto i taua miriona i te tau 2040, ka eke ki tōna 750,000 te hunga e kī ana he Māori rātou, ā, e 250,000 te tokomaha e kī ana he tauwiwi rātou. I te tau 2013, i taea e te 257,500 (e 55 ōrau) o ngā pakeke Māori (kua 15+ tau) ngā kupu torutoru, ngā kīanga torutoru noa iho rānei, neke atu rānei i ērā, te kōrero i te reo Māori.⁶ E hāngai ana tēnei whāinga ki te whāinga rongomaioaro a te Maihi Māori e kī nei 'kia kotahi miriona ngā tāngata (kia neke atu rānei) e whakamahi ana i te reo Māori i roto i ngā takiwā rumaki i te hapori'.
36. Nā tēnei whāinga me mātua tere rawa atu te whakapikinga ake o ngā kaikōrero i te whakatipuranga kotahi, kia neke atu i te huaruatanga o te tokomaha o ngā Māori e kōrero Māori ana, ā, kia tata tonu ki te whā o ngā whakareatanga o te tokomaha o ngā tauwiwi e kōrero Māori ana. Ahakoa he tino wero tēnei, arā ōna huarahi motuhenga e wātea ana e whakatutukihia ai, pēnei i te tipuranga ake o te hiahia o te marea, i te whānuitanga hoki kei reira e piki ake ai ngā karawhiunga mahi a te kāwanatanga.
37. I te korenga i kapi i ngā uiui ā mohoa nei te katoa o te taupori ki tēnei paerewa, e whakatewhatewha ana ngā āpiha i te huarahi pai katoa hei kohikohi i ēnei raraunga. Tērā tonu, ka tutuki tēnei mā tētahi āpitihanga atu ki tētahi uiui ā-motu kua oti kē.

Te whakaahua 2: Te mōhio ki te kōrero Māori (ngā Māori 15+ tau)



Source: Health of the Maori Language Survey (2001), Te Kupenga (2013)

5 Heoi anō, me maumahara, he mea whakatū a Te Kupenga i runga i te arotake whaiaro, ka mutu, ka taurangi pea te inenga o te mōhioatanga ki te reo.
6 Kāore e wātea mai ana he tauranga mō ngā Māori e tamariki ake ana i te 15 tau, mō ngā tauwiwi rānei hei whakatauritenga.

Te Whāinga Rongomaioro 3: Tae rawa ake ki te tau 2040, kua 150,000 ngā Māori e kōrero Māori ana hei reo mātāmua

38. E kōpani ana i tēnei whāinga te hiranga o te whakamahinga o te reo Māori hei reo ora. Ko te hunga e whakamahi ana i te reo hei “reo mātāmua”, kia tae rawa ake ki te tau 2040, ko ērā e pērā ana te kaha o tā rātou whakamahi i te reo i tā rātou whakamahi i reo kē, kia kaha kē atu rānei i tā rātou whakamahi i reo kē. Ka puta pea tēnei āhuatanga i te mahi, i ngā horopaki ā-pāpori me te kāinga anō – koia rā hoki tētahi horopaki nui whakaharahara e puta ai te tuku ihotanga i tēnā whakatipuranga ki tēnā.



E kīa ai he reo ora, he take nui kia whakamahia te reo Māori i te mahi me ngā horopaki pāpori, i te kāinga anō hoki. He whakaahua nā Adrian Heke.

39. tNā te uiui o Te Kupenga i whakahaeretia ai i te tau 2013, e mōhio ana tātou ko tōna:
- 37,000 (ko te 7.0% rānei) o ngā Māori kua pakeke ake i te 15 tau kei te kōrero i te reo Māori hei reo matua i te kāinga ki ngā mātua rānei, ki ō rātou hoa rānei, ki ngā tamariki kōhungahunga rānei, ki ngā tamariki o te kura rānei, ki a wai kē atu rānei
 - 59,000 (ko te 11.2% rānei) kei te kōrero i waho i te kāinga, i ngā wā ka toro rānei ki ētahi, i ngā wā rānei kei te mahi, kei ngā hākinakina, kei ngā hui ā-hāhi, kei ngā karapu, kei ngā hui, kei ngā kura rānei e āwhina ana, ā,
 - 70,000 (ko te 13.2% rānei) kei te kōrero ki hea rānei: i te kāinga rānei, i waho rānei o te kāinga, i aua wāhi e rua rānei.⁷
40. He tino pikinga tonu tēnei, ā, me mātua whai, kia tae rawa ake ki te tau 2040, kia neke atu i te huaruatanga o te tauranga o te pae o raro, o te 70,000. E rua ngā mahi a te Kāwanatanga i tēnei tūāhuatanga. Tuatahi, mā te pūnaha mātauranga ka taea e ia te whakapiki ake te tokomaha o ngā kaikōrero kua eke ki tētahi taumata matatau tonu e whakamahi ai rātou i te reo Māori hei reo mō ia rā. Tuarua, he take nui whakaharahara kia whai wāhi ngā ākonga o te reo Māori ki tōna whakamahinga o ia rā i ngā kāinga me ngā hāpori. He momo hua kei te Kāwanatanga hei tautoko, hei whakawai hoki i te whakawhanaketanga o ngā takiwā e whakamahia ai te reo i ia rā.
41. He tautoko tā tēnei whāinga i te whāinga o te Maihi Māori e whai nei kia 25 ōrau ngā tamariki Māori (i te 0 ki te 7 tau) e kōrero ana i te reo Māori hei reo tuatahi. Kei ngā whāinga e rua e whakaaturia ana te hiranga o te tuku ihotanga i tēnā whakatipuranga ki tēnā, ā, me mātua teitei ake te taumata o te matatau.

Te ara whakatutuki: te huarahi e tutuki ai te panonitanga

42. He whānui tā te Kāwanatanga toro, he whānui hoki tana tūāpapa rauemi. E taea ana e ia ēnei te whakamahi i te kōkiritanga kia koke ai ngā whāinga heke me ngā whāinga rongomaio. E toru ngā wāhanga o te ariā o te panonitanga e takoto ana hei tūāpapa mō tēnei rautaki.

- **TE WHAKANUI** – e **kaingākaudia** ana te reo Māori e Aotearoa whānui hei wāhanga matua mō te tuakiri ā-motu
- **TE WHAKAAKO** – e **ākona** ana te reo Māori e Aotearoa whānui



He huarahi whai hua te ako i te kōhanga reo, i ngā whare mātauranga mō te kōhungahunga me ētahi atu kura mātauranga hei whakarauora i te reo, otirā, i ngā wā e tautokona ana i te kāinga. He whakaahua nā Adrian Heke.

- **TE WHAKAATU** – e **kitea** ana, e **pānuitia** ana, e **rangona** ana, e kōrerotia ana hoki te reo Māori e Aotearoa whānui.

43. Ko te take o tēnei huarahi, ko ngā momo hua hoki e wātea ana ki te kāwanatanga hei whakaawe i ngā whāinga heke ā-reo, kei raro iho nei e takoto ana.

- I. **TE WHAKANUI** – i waenga i te motu, he take whakahirahira kia **kaingākaudia** te reo Māori e ngā tāngata o Aotearoa. Mā te pēnei e puta ai ētahi ritenga ā-pāpori e mauritau ai ngā kaikōrero Māori ki te kōrero i te reo. Mā te pēnei anō hoki e whakaoho te matenui kia whai, kia whakamahi hoki te tangata i te reo.
 - a. He kaupapa mahi ka kawea e te Karauna, e te rāngai tūmataiti, e ngā iwi me ngā hapori hei whakatairanga i te reo Māori i ngā momo huarahi. He nui ngā huarahi e wātea ana e puāwai ai te pātuitanga.
 - b. He nui te takiairi o te taiohi ki te anamata o te reo Māori, ka mutu, me mātua whakatakoto he huarahi e wātea ana e ārahi ai rātou i tōna whakatairangātanga.
 - c. He take whakahirahira kia whakaaro nui tātou ki te kōhanga o te reo Māori e kōrerotia ana.
- II. **TE WHAKAAKO** – me **ako** rawa te tangata i te reo Māori e pūmau ai tōna anamata.
 - a. Kua tautuhia e ōna mātanga tuarea, ko te tuku ihotanga i tēnā whakatipuranga ki tēnā, otirā ko te ako i te kāinga mai i te ohinga, tētahi take nui whakaharahara e ora ai te reo. Heoi anō, kua kaiwaengatia tēnei tuku ihotanga, ka mutu, me whakaara anō tēnei e kaha ai te ora o te reo Māori hei anamata. He kaupapa here, he haumitanga hoki ā te Karauna hei tautoko i tēnei. I raro i te Maihi Māori, haumi ai a Te Mātāwai ki ngā kaupapa e tautoko ana i te reo Māori ki waenga i ngā whānau me ngā hapori.

- b. E whai hua ana hoki te ako i te kōhanga reo, i ngā whare mātauranga mō te kōhungahunga, i ngā kura Māori, i ngā kura auraki me ngā kura mātauranga pakeke, otirā i ngā wā e tautokona ana tēnei āhuatanga i te kāinga.

III. TE WHAKAATU – me haere ngātahi te ako i te reo me tōna **whakamahinga**, mā te kōrero, mā te pānui, mā te rangona me te ktiea hoki ōna e whakamahia ana. Ko te tangata e ako ana engari kāore e whakamahi ana i te reo, tērā tonu, ka heke tōna kaha ki taua reo rā i roto i te wā.

- a. Kei te Karauna, i te taha o Te Mātāwai, te kaha ki te tautoko i ngā karawhiunga mahi hei waihanga i ngā takiwā ā-hapori e whakamahia ai te reo Māori. Mā konei e whakataktohia ai ētahi huarahi e wātea ana mō te hunga matatau ki te reo me ērā ākongā reo tuarua.
- b. Kei te Karauna te kaha ki te tuku kia māmā ake ai te toronga ki ana ratonga i te reo Māori, otirā, mā ngā hapori kei reira kē te matenui, kei reira rānei e āta whakatipuria ana.

44. I raro i ngā whāinga heke e toru tētahi huinga kaupapa matua hei mahinga mā te kāwanatanga e whakamahukitia ana i raro iho nei i muri i ngā matapakinga a ngā rōpū matua.

Ngā Rōpū Matua



He take nui whakaharahara te taiohi e tutuki ai ngā whāinga o te Maihi Karauna.

45. Ko tā ngā rōpū matua he whakarite tirohanga kia arotahi ai te Karauna ki te tangata, kua noa iho ia ki ngā whakahaere, ki ngā whakaaro rānei. Kua whai wāhi atu ngā rōpū ki te whakataunga o ngā kaupapa matua.

Ngā tamariki me ngā rangatahi

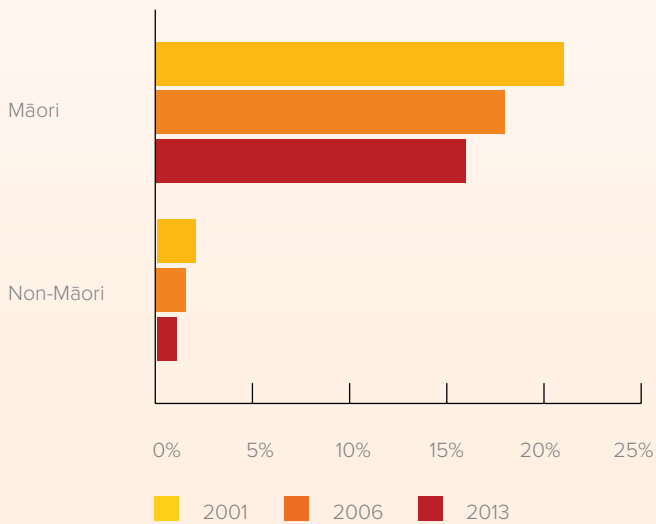
46. He take nui whakaharahara te rōpū e tutuki ai ō mātou whāinga rongomaoro e marohitia ana. Ko te nuinga o te whanaketanga o te reo ka puāwai i te wā o te pūhoutanga, ā, e tika ana kia pēnei ko te nuinga o ngā kaikōrero hou o te reo Māori ka whakawhanaketia i waenga i ngā taiohi o nāianei, o anamata hoki.

47. Kei roto i tēnei rōpū matua ko ngā tāngata katoa o Aotearoa e tamariki ake ana i te 25 tau. I eke ki te 1.54 miriona ngā tāngata i tēnei rōpū i te tau 2013, ko tētahi 23.4 ōrau o ērā he Māori. Hei te tau 2038, ko te tapeketanga ka pērā tonu engari ko te ōwehenga o ngā Māori ka piki ake ki te 28.8 ōrau.

48. I te tau 2013, 17.8 ōrau o ngā Māori, ā, 0.69 ōrau o ngā tauwiwi i waenga i te 0 ki te 24 tau e mōhio ana ki te kōrero Māori (tā te tatauranga whakamahukitanga). Kua ōrite te kaha o te heke o ēnei tatauranga mai i te tau 2000 ki tērā o te whānuitanga o te taupori. Manohi anō, i piki ake te tokomaha o ngā tāngata i te 15 ki te 24 tau te pakeke e kōrero Māori ana mai i te tau 2001 ki te tau 2013.

49. He rerekē ngā tauira mō te mauanga i waenga i te taiohi Māori me te taiohi tauwiwi. Ko te nuinga o ngā Māori ka mau i a rātou te reo, e kōrero kē ana i te reo i te taenga ki te whā tau te pakeke, engari he tokoitī ngā tauwiwi e kōrero ana i te taenga ki te whā tau te pakeke ina whakatauritea ki te tokomaha kua mau i a rātou te reo i te taenga ki te 15 tau, tae noa ki te 19 tau te pakeke. Āpiti atu ki tēnā, ahakoa e piki tonu ana ngā tatauranga e pā ana ki ngā Māori kei te 20-24 tau te pakeke e kōrero Māori ana, ka heke haere aua tatauranga e pā ana ki ngā tauwiwi ki aua tau anō te pakeke. Tērā tonu, e whakaata ana tēnei i te wāhi nui noa atu o te tuku ihotanga i tēnā whakatipuranga ki tēnā i waenga i ngā Māori, tērā i te whakawhirinakitanga tino nui a ngā tauwiwi ki te pūnaha mātauranga.

Te whakaahua 3: Te mōhio ki te kōrero Māori i te tau 2013 (0–24 tau te pakeke)



Te whakaahua 4: Ngā tatauranga kōrero mō ngā tamariki me ngā rangatahi

Ngā tau	He Māori		He Tauīwi	
	Te tokomaha o ngā kaikōrero	Te ōrau o te taupori	Te tokomaha o ngā kaikōrero	Te ōrau o te taupori
0–4	9,417	13.7 ōrau	618	0.31 ōrau
5–9	11,412	17.3 ōrau	1,008	0.50 ōrau
10–14	12,129	19.2 ōrau	1,692	0.82 ōrau
15–19	11,400	19.8 ōrau	1,809	0.83 ōrau
20–24	9,642	20.2 ōrau	1,722	0.79 ōrau

Ngā tāngata matatau ki te reo



Ko ngā mātanga kaikōrero ngā kaiako o ngā rangatira o te whakatipuranga e heke iho nei (i te kāinga me te kura). Te Whakaputanga o ngā Ika a Whiro o Te Panekiretanga o te Reo, Te Wānanga o Aotearoa, 2018. Nā Rawhitiroa Photography.

50. Me whai rawa tētahi rau takitini o ngā kaikōrero matatau kei ngā pakeketanga katoa e kīia ai taua reo rā he reo whaitake, he reo ora hoki. Ko ngā tāngata matatau ki te reo ko ngā kaiako o te whakatipuranga e heke mai nei (i roto i ngā kāinga me ngā kura), ko ngā rangatira hoki i ngā hapori me ngā whakahaere a te Māori me ngā tauiwi. Ko rātou ngā iho pūmanawa o te reo, ngā kaipupuri hoki i te mātauranga Māori.
51. E kīia nei tēnei rōpū ko ērā kaiwhakamahi i te reo kei te taumata o te tino matatau ki te reo Māori (he pitomata rānei o rātou kia pēnei). I te tau 2013, i whakatau tatangia e 50,000 Māori (te 10.6 ōrau) i pai te mōhio, i tino mōhio rānei ki te kōrero, he pikinga paku tēnei i te 9 ōrau i hopukina ai i te tau 2001.

Te rāngai tūmatanui

52. E tawhiti ana te toro ā-pāhekoheko a te rāngai tūmatanui ki te Māori me ētahi atu tāngata o Aotearoa. He whānui tana toronga i te whenua, ka mutu, he maha ana momo kaupapa mahi mā reira e mahi tahi ai me te marea, pēnei i: te kawenga

ā-kanohi ki te kanohi nei i ngā ratonga e rere hāngai atu ana ki te marea; ngā kaupapa ka tukuna mā te ipurangi; te tukunga hoki o te pāpāhotanga.

53. E kite ai te Karauna i te uaratanga o te reo Māori, e kounga ai hoki tana tuku i ngā ratonga ki ngā hapori Māori, me mātua mōhio ia e kaha ana te rāngai tūmatanui tonu ki te 'kōrero' i taua reo rā. Mā te pērā, ka hāngai, ka autaki hoki te pānga ki te whakarauoratanga o te reo.
54. Ko ētahi hoki o tēnei rōpū ko ngā kaimahi katoa o te whānuitanga o te rāngai tūmatanui o Aotearoa, kei reira rā tōna 2,900 whakahaere, kua whakawehea ki te kāwanatanga me ngā kaunihera. E tuku mahi ana te rāngai tūmatanui ki te 348,000 tāngata, arā, ko tōna 13.8 ōrau o te katoa o te hunga whai mahi o te motu.

Te āhua o tā te Maihi Karauna tautoko i te Maihi Māori



Āhekoheko ai ngā tāngata e mahi ana i te rāngai tūmatanui ki ngā tāngata o Aotearoa puta noa i te motu mā te tuku ratonga tūmatanui, nō reira he wāhanga nui tō rātou i te whakarauoratanga o te reo.

55. E arotahi ana te Maihi Māori ki te whakarauoratanga o te reo Māori i ngā kāinga, i ngā hapori me ngā whānau, otirā, e kitea ana tēnei i tōna whāinga

tāhuhu e kī nei, 'Kia ūkaipō anō te reo Māori.'

Ko tōna aronga kei te mauanga o te reo Māori i te kāinga hei reo ūkaipō, hei reo tuatahi rānei, kei te tipuranga hoki o te tuku ihotanga i tēnā whakatipuranga ki tēnā i roto i ngā whānau.

56. E arotahi ana te Maihi Karauna ki a Aotearoa whānui e puta ai ngā ritenga pāpori mō te tuku ihotanga i tēnā whakatipuranga ki tēnā, mō te horapatanga hoki o te whakamahinga o te reo Māori hei reo ora.
57. Ina pānuitia katoatia, e whakaatu mai ana ngā rautaki i tētahi wawata e taea ai e te kotahi miriona o ngā tāngata o Aotearoa te kōrero Māori ki te taumata kāore i raro iho mai i te mōhiotanga taketake kia tae rawa ake ki te tau 2040, ā, e whakamahi ana rātou i tēnei pūkenga ki te pāhekoheko i waenga i ngā takiwā rumaki o te hapori. Ka taea e te Karauna te whakarite huarahi kia horapa ai te hiahia me te matenui, ā, ka taea hoki te tuku ngā ratonga mātauranga hei koha ki te whāinga kia kotahi miriona tāngata.
58. Me mātua mahi tahi a Te Mātāwai me te Karauna i runga i te huarahi o te tautoko a tētahi i tētahi ki te whakatinana i ngā rautaki. Me mātua whai i te āta rurukutanga i ngā wā e aro pū ana tētahi rautaki ki ngā rōpū e aro pūngia nei hoki e tērā atu rautaki. Hei

tauirā, e arotahi ana te Maihi Māori ki te reo Māori i ngā kāinga, i ngā whānau me ngā hapori. E kī ana te Maihi Karauna e taea ana e te Karauna te waihanga ritenga e kaha ai te ora o te reo i ēnei horopaki.

59. Mā te Karauna te reo Māori e whakatairanga ki te motu, ki te ao hoki. Māna e whakawhanake kaupapa here e whakaritea ai ngā whakawai e tika ana kia tauawhi ngā hunga kaparua me te rāngai tūmataiti i te reo Māori. Mā ana pokapū e whai kia nui ake ngā ratonga i te reo Māori e māmā ake nei te toronga atu. Ka tohe tonu te Karauna ki te whakapai ake i te tukunga o ngā ratonga me mātua whai i te whakarauoratanga o te reo, pēnei i te mātaunga, i te pāpāho me ngā kaupapa ā-ipurangi hei tautoko i ngā kaupapa a ngā whānau, a ngā hapū, a ngā iwi me ngā hapori.
60. I ētahi atu wāhi, ka iti ake ngā inakitanga, engari he take nui tonu kia whakawhiti kōrero te Karauna me Te Mātāwai, ā, kia whakamōhio tētahi i tētahi i runga i te whakaaro kia hāngai tētahi ki tētahi. E arotahi ana te Maihi Karauna ki te whakatairangatanga o te reo Māori i te whānuitanga o te hapori o Aotearoa, ā, he take nui tēnei e puta ai ētahi ritenga whai painga ā-pāpori mō ngā kaupapa ā-whānau, ā-hapori rānei i raro i te Maihi Māori.

Te whakaahua 5: Ngā mahi rerekē a tēnā rautaki e tautoko ana i ngā mahi a tērā atu

	Te Maihi Māori	Te Maihi Karauna
Te whāinga koruru	Kia mauriora te reo Māori	
Te whāinga tāhuhu	Kia ūkaipō anō te reo	Kia māhorahora te reo
Te aronga matua	“Te whāititanga”: ngā whānau, ngā kāinga me ngā hapori	“Te whānuitanga”: te pāpori me te pūnaha
Ngā whāinga rongomaio		Tae rawa ake ki te tau 2040, kua kaingākau a Aotearoa ki te reo Māori hei wāhanga matua mō te tuakiritanga ā-motu
	Kia 1,000,000 tāngata e whakamahi ana i te reo Māori i ngā takiwā rumaki o te hapori	Tae rawa ake ki te tau 2040, kua 1,000,000 ngā tāngata o Aotearoa ka taea e rātou ngā mea taketake te kōrero i te reo Māori
	E 25 ōrau o ngā tamariki Māori (te 0-7 tau te pakeke) e kōrero ana i te reo Māori hei reo tuatahi	Tae rawa ake ki te tau 2040, kua 150,000 ngā Māori e kōrero ana i te reo Māori hei reo matua

Te whakaahua 6: Maihi Kararuna Strategy

<h1>KIA MĀHORAHORA TE REO</h1> <h2>KI NGĀ WĀHI KATOĀ, MĀ NGĀ HUARAHĪ KATOĀ, MŌ NGĀ TĀNGATA KATOĀ, I NGĀ RĀ KATOĀ</h2>			Te Whāinga Tāhuhu
Te waihanga i ngā ritenga e kaha ai te ora o te reo Māori hei reo ora			Te Mahi
Te Aotearoatanga	Te Mātauranga	Te Hononga	Ngā Whāinga Heke
Tae rawa ake ki te tau 2040, kua kaingākau te reo Māori e Aotearoa hei wāhanga matua mō te tuakiri ā-motu	Tae rawa ake ki te tau 2040, kua 1,000,000 ngā tāngata o Aotearoa e mōhio ana ki te kōrero i te reo Māori mō ngā mea taketake	Tae rawa ake ki te tau 2040, kua kōrero ngā Māori 150,000 i te reo Māori hei reo mātāmua	Ngā Whāinga Rongomaioro
Te Whakanui – te waihanga i ngā ritenga kia kaingākau te reo Māori e Aotearoa whānui hei wāhanga matua mō te tuakiri ā-motu	Te Whakaako – te waihanga i ngā ritenga kia akona te reo Māori e Aotearoa whānui	Te Whakaatu – te waihanga i ngā ritenga kia kitea , kia pānuitia , kia rangona, kia kōrerotia te reo Māori e Aotearoa whānui	Te Ara Whakatutuki
Ngā kaupapa matua o nāianeī: <ul style="list-style-type: none"> Kia tokomaha ake ngā tāngata o Aotearoa e kaingākau ana ki te reo me ngā tikanga Māori hei wāhanga mō tō tātou tuakiri ā-motu Kia nui ake te uara ka hua mai i te reo me ngā tikanga Māori mō te whanaketanga ā-ōhanga, ā-pāpori hoki Kia tokomaha ake ngā rangatahi e hiamō ana e pā ana ki te reo Māori Ngā kaupapa matua o te pae waenga: <ul style="list-style-type: none"> Kia tokomaha ake ngā tāngata e pāhekoheko ana ki ngā kaupapa reo Māori o te ara pāpāho me te ara ipurangi e kōunga ana 	Ngā kaupapa matua o nāianeī: <ul style="list-style-type: none"> Kia tokomaha ake ngā tamariki e ako ana i te reo Māori Kia tokomaha ake ngā tāngata e koke ana ki tua o te mōhioanga taketake ki te reo Māori Ngā kaupapa matua o te pae waenga: <ul style="list-style-type: none"> Kia tokomaha ake ngā tāngata e tino matatau ana ki te reo Māori 	Ngā kaupapa matua o nāianeī: <ul style="list-style-type: none"> Kia nui ake te whakamahinga o te reo Māori i te kāinga, i te marae, i te hāpori hoki Kia wātea ake ngā rauemi reo Māori e puritia ana e te Karauna Kia maha ake ngā ratonga i te reo Māori e māmā ai te toronga atui Ngā kaupapa matua o te pae waenga: <ul style="list-style-type: none"> Kia nui ake ngā tāone iti me ngā tāone nui e tauawhi ana i te reoruatanga 	Ngā Kaupapa Matua
Ngā tamariki me ngā rangatahi Young people			Ngā Rōpū Matua
Tāngata Matatau ki te Reo Proficient speakers			
Te Rāngai Tūmatanui Public sector			

3. Whakanui – ko te whakaūnga o te kaingākauria o te reo Māori: Ngā kaupapa matua hei mahi mā te Karauna



Te Rangatū mō te Wiki o te Reo Māori, 2017. He ata nā Te Taura Whiri i te reo Māori.

61. E whakaahua ana ngā kaupapa matua, e whakamahukitia ana i raro nei, ngā wāhi e pīrangai nei te Karauna kia whakahāngai tana aronga me ana rauemi i ngā tau e rima e tū mai nei. Ka whakaritea ki ia kaupapa matua tētahi pokapū whakaemi, ngā mea e rua rānei, ko te mahi he whakemi i tētahi ohu pokapū kāwanatanga ki te whakatutuki i te ngātahitanga o te pānga ki taua kaupapa matua rā.
62. Hei taurira, mā te Manatū Taonga e whakaemi ngā karawhiunga mahi mō te kaupapa matua tuatahi o raro iho nei e kī nei, 'kia tokomaha ake ngā tāngata o Aotearoa e kaingākau ana ki te reo me ngā tikanga Māori hei wāhanga matua mō tō tātou tuakiritanga ā-motu', engari ka whai wāhi hoki ngā karawhiunga mahi ngātahi a ngā momo pokapū, tae atu ki te Tari Taiwhenua me Te Puni Kōkiri.
63. Ka whakaahuatia i ngā kōrero e whai ake nei te hunga māna e whakaemi ngā karawhiunga mahi a te kāwanatanga mō ia kaupapa matua, mō ngā tūtohu o nāianeī, me ngā momo kaupapa mahi e pohewatia ana.
64. Ko ngā tūtohu ngā mea hāngai katoa e wātea ana, i runga i ngā raraunga o nāianeī (i ngā wāhi e taea ai), i ngā puna raraunga rānei e taea rā te whakawhanke ā tōna wā. I ngā wāhi kāore nei ngā tūtohu e wātea ana i tēnei wā, ka whakawhanaketia ā tōna wā.

Kia tokomaha ake ngā tāngata o Aotearoa e kaingākau ana ki te reo me ngā tikanga Māori hei wāhanga matua mō tō tātou tuakiritanga ā-motu

Te wā	Ināianeī (0 ki te 2 tau te wā whakaaranga)
Te pokapū whakaemi	Te Manatū Taonga
Ngā raraunga o nāianeī	<p>Ko te 49 ōrau o ngā pakeke o Aotearoa e whakaae ana, e tino whakaae ana rānei kia “whakatenatena, kia tautoko hoki te kāwanatanga i te whakamahi o te reo Māori i ngā horopaki o ia rā”</p> <p>E 35 ōrau o ngā pakeke o Aotearoa e whakaae ana, e tino whakaae ana rānei “ka pai mehemea ka kōrero Māori, ka kōrero Pākehā hoki ngā tāngata e noho ana ki Aotearoa”</p> <p>E 45 ōrau o ngā pakeke o Aotearoa e whakaae ana, e tino whakaae ana rānei kia “reo Māori, kia reo Pākehā hoki ngā panui”⁹</p>



He Hekenga Waka, nō te rangi tuatahi o te New Zealand Festival, 2018. He whakaahua nā Matt Grace.

65. He reo whai mana ā-ture te reo Māori, ā, he whakahirahira ki te tuakiri o Aotearoa.⁹ Kua whakaurua ko 'ngā tikanga' ki tēnei kaupapa matua nā ngā hononga whakairoiro i waenga i te reo me te ahurea Māori. He nui te wāhi ki te ahurea i te āhua ki tō tātou whakakotahitanga ā-motu, ā, ka taea, hei tauira, te whakapuaki mā te whakaurunga o te reo me ngā tikanga Māori, ki ngā huinga ā-motu, ki te kapa haka, ki te hākinakina me te waihanganga o ngā mahi toi hou.
66. Hei tauira, he wāhi whakahihiri tō te kapa haka hei waka mō te whakarauoratanga me te purutanga o te reo me ngā tikanga Māori, mō te maumaharatanga ki ngā kōrero o mua, ā, ka noho pea hoki ia hei waka hei whakapakari i te āhua ki tō Aotearoa whakakotahitanga ā-motu.
67. E arataki ana Te Manatū Taonga i te tini o ngā kaupapa mahi e pā ana ki te tuakiritanga ā-motu, e ārahi ana hoki i te whanaketanga o ngā kaupapa here tūmatanui ā-ahurea, ā, e tuku pūtea ana ki ngā
- hinonga e kawea ana i ngā kaupapa ā-toi, ā-ahurea, ā-taonga tuku iho hoki. Ko ēnei hinonga, tae atu ki ngā whakahaere pēnei i a Te Papa, i a Toi Aotearoa, i a Pouhere Taonga, i a Ngā Taonga Sound and Vision me Te Matatini, e tautokona ana ki te pūtea mō te tini o ngā momo mahi, engari he uaratanga ka puta ki te whakarauoratanga o te reo Māori.
68. Ka riro hoki mā ētahi pokapū kē atu e arataki te whakatinanatanga o tēnei kaupapa matua pēnei i Te Tari Taiwhenua, i Te Taura Whiri i te Reo Māori, i Te Puni Kōkiri hoki tae atu ki ngā kaunihera ā-rohe. Ko tētahi tauira o tētahi kaupapa mahi ngātahi, ko Te Wiki o te Reo Māori, e aratakihia ana e Te Taura Whiri i te Reo Māori.
69. Anei ētahi tauira o ngā mahi e taea ana hei kōkiri i te kaupapa matua nei:
- ko te whakatairanga i te reo Māori mā ngā mahi a ngā pokapū i ngā rāngai o te toi, o ngā taonga tuku iho, o te pāpāho me te hākinakina
 - ko te whakatairanga i ngā huarahi e wātea ana ki ngā tāngata katoa o Aotearoa ki te pāhekoheko mai ki te reo Māori me te ahurea Māori, pērā i ngā hui whakanui me ngā tūāhua ā-motu e tāpui ana
 - ko te waihanganga i ngā kaupapa ā-ipurangi e tautoko ana i ngā whāinga ahurea a ngā iwi me ā ngāi Māori, e hono ana hoki i ngā tāngata katoa o Aotearoa ki te ahurea Māori
 - ko te whakapakari i te mana o Te Wiki o te Reo Māori me Ngā Tohu Reo Māori ka tū i ia tau.

9 Wāhanga *(2)(i), Te Ture mō te Reo Māori

Kia nui ake te uara ka hua ake i te reo me ngā tikanga Māori e puta ana ki te whanaketanga ā-ōhanga, ā-pāpori anō hoki

Te wā	Ināianeī (0 ki te 2 tau te wā whakaaranga)
Te pokapū whakaemi	Te Puni Kōkiri
Ngā raraunga o nāianeī	Me waihanga tētahi inenga



Ka nui ake te reo me ngā tikanga Māori ka whakaurua ki te whakawhanaketanga o ngā kaupapa here a te kāwanatanga me te hoahoatanga o ngā ratonga pēnei i ngā wāhi o te whanaketanga ā-pāpori. He whakaahua nā Adrian Heke

70. E puta haere ake ana tētahi tūāpapa taunakitanga e mea ana mā te whai wāhi ki te ahurea e pakari ake ai pea ngā putanga ā-pāpori, ā-ōhanga hoki. Anei ētahi tauira o ngā painga:

- he painga i te utu ā-tau i te rāngai mātauranga mō ngā kaikōrero o te reo Māori
- te whakauru a ngā pakihī, otirā ko ērā o te rāngai tāpoi, i te reo Māori me te ahurea Māori ki ā rātou tauira pakihī me ngā huarahi whai mahi ka wātea mai i tēnei tūāhuatanga
- ka nui ake te tutuki o ngā whakamātautau NCEA o te kaupae 2, o runga ake rānei i ngā tauira kei ngā kura rumaki¹⁰

71. Mā Te Puni Kōkiri e whakaemi tētahi huinga ā-tari puta i te kāwanatanga hei whakawhanake i ētahi mahi e pā ana ki tēnei kaupapa matua. Anei ētahi momo mahi tērā tonu ka ara ake:

- ko te whakapai ake i te māramatanga me te mōhiotanga ki ngā painga ā-ōhanga, ā-pāpori hoki o te reo me ngā tikanga Māori
- ko te whakauru i te reo me ngā tikanga Māori ki tā te kāwanatanga waihanga i ngā kaupapa here me ngā ratonga
- ko te āta whakatipu i te pānga o te whai wāhi ki te ahurea, hei tauira, mā te mahi tahi me ngā kaituku mahi, i ngā rāngai tūmatanui, i ngā rāngai tūmataiti hoki, ki te whakanui i ngā huarahi e wātea ana ki ngā kaikōrero reo Māori.

¹⁰ Senior Secondary Students' Achievement at Māori Medium Schools 2004 - 2006, Haobo Wang and Claire Harkess, Demographic and Statistical Analysis Unit, Ministry of Education (2007).

Kia nui ake ngā rangatahi e hiamō ana i te reo Māori

Te wā	Ināianeī (0 ki te 2 tau te wā whakaaranga)
Te pokapū whakaemi	Te Puni Kōkiri me Te Māngai Pāho
Ngā raraunga o nāianeī	E 84 ōrau o ngā kaiwhakautu pātai i tētahi uiui nā Te Māngai Pāho e hiahia ana ki te whakapai ake i ō rātou pūkenga reo Māori" E 52 ōrau o ngā rangatahi e whakamahi ana i te ipurangi, i te pāpāho porī rānei hei hono ki te ahurea Māori.



He whakaahua nā Adrian Heke.

72. Me mātua whakapono ngā rangatahi puta noa i Aotearoa e hāngai ana te reo Māori ki ō rātou ao, ā, me hiamō rātou i ngā huarahi ka puare i te reo. Kāore e pahure i te tautoko noa i te ako mā te pūnaha mātauranga. Me whai huarahi anō hoki tātou i te hapori whānui hei whakaihihi, hei whakahihiko anō i te rangatahi.
73. Mā Te Puni Kōkiri me Te Māngai Pāho e arataki ngā karawhiunga mahi a ngā tari kāwanatanga i tēnei kaupapa matua. Ko Te Taura Whiri i te Reo Māori anō tētahi o ngā pokapū matua, i runga i tana mahi whakatairanga. Tērā tonu ka aro ngā mahi ki ngā kaupapa matua e toru:
- a. ko te whakawātea i ngā huarahi e tū ai ngā rangatahi hei kaiarataki ki te whakatairanga i te reo Māori
 - a. ko te whakawhanake, i te taha tonu o te rangatahi, i ngā whakaputanga reo Māori (tae atu ki ngā mea tahiko) e taea ana te toro te rahinga o ngā rangatahi
 - a. ko te whakatinana i te Maihi Karauna kia hāngai tonu ki ngā rangatahi.

Kia nui ake ngā tāngata e pāhekoheko ana ki ngā kaupapa kouniga tonu ā-pāpāho, ā-ipurangi hoki i te reo Māori

Te wā	Te pae waenga (e 3 ki te 5 tau te wā whakaaranga)
Te pokapū whakaemi	Te Māngai Pāho
Ngā raraunga o nāiane	<p>E 52 ōrau o te Māori, e 21 ōrau hoki o Tauwiwi i mātaki i ngā hōtaka pouaka whakaata mō te reo Māori me te ahurea, mō tētahi rānei o aua kaupapa</p> <p>E 30 ōrau o te Māori, e 5 ōrau hoki o Tauwiwi i kī mai i whakarongo rātou ki ngā reo irirangi ā-iwi i ngā marama 12 kua hori¹²</p> <p>Ka waihangahia tētahi mea hei ine i te tokomaha i toro ki ngā kaupapa mō te reo Māori me te ahurea Māori, ki tētahi rānei o aua āhuatanga, i te ipurangi, i ngā taupānga rānei</p>

74. Ka taea e ngā pāhotanga reo Māori me ngā kaupapa ā-ipurangi te whakaputa whānui te reo, te whakapai ake hoki te uaratia o te reo e te tangata. Mā reira pea e puta ai ngā pānga pai ki te mōhio o te tangata ki te kōrero i te reo Māori. E 53 ōrau o ngā kaimātakitaki i a Whakaata Māori e whakapono ana kua pai ake tō rātou mōhio ki te reo Māori nā te mātākihanga o taua ratonga. E whakaatu ana ngā tātarihanga o te hunga mātakitaki i whakaritea mā Te Māngai Pāho he nui te hunga mātakitaki ka tahuri



Ko Ngahuia Azula, kaiwhakaari. He ata nā Te Māngai Pāho.

pea ki ngā kaupapa reo Māori e whakaihiihi ana, e hiwa ana, i te pouaka whakaata, i te ao tahiko anō hoki.

75. He huarahi ka wātea i te taiao pāpāho ā-oro, ā-tā hoki e tere huri nei, hei waihanganga i ngā kaupapa reo Māori i ngā momo pae maha me ngā momo pūrere anō hoki. Ka hāngai ake tērā ki ngā hiahia o te kaimātakitaki takitahi. E whai ana Te Aratuku Whakaata Irirangi Māori ki te waihanganga i ngā kaupapa hei pāho mā ngā pae-pāho maha e tautokona ai tā te tamariki ako i te reo Māori.
76. E tutuki ai tēnei, me whakaū i te wātea mai o ngā tūāwhiorangi reo irirangi me ngā rauemi e taea ai e te iwi, e te hapū, e te whānau Māori te whai ngā huarahi hou hei whakatairanga i te reo Māori.
77. Kua tāngia kētia e te Kāwanatanga tētahi putunga kōrero reo Māori nui i te ipurangi, tae atu ki ngā kaupapa reo Māori i roto i te mātāpunenga ā-ipurangi, i a Te Ara, i tāngia ai e te Manatū Taonga. Ka whakaputaina he kaupapa reo Māori anō i te ipurangi hei ngā tau e heke mai nei.

78. Ka whakatairanga a Te Māngai Pāho i te reo Māori me te ahurea Māori mā te tuku pūtea ki ngā kaupapa Māori i te ao puoro me ngā pāhotanga hou. Māna e whakaemi ngā karawhiunga mahi a ngā tari kāwanatanga, ka mutu koinei pea ētahi o aua mahi:
- ko te whakanui ake i te toonoa, i te whakaputanga hoki o ngā kaupapa reo Māori e kounga ana hei pāhotanga ā-oro, ā-ipurangi anō hoki
 - ko te whakaū kia hiwa tonu ngā kaupapa reo Māori mā ngā rangatahi, mā ngā tāngata matatau ki te reo anō hoki
 - ko te whakakaha i ngā iwi, i ngā hapū, i ngā whānau Māori hoki ki te pāho i ā rātou anō kaupapa reo Māori.

'Waiata Mai', he hōtaka pouaka whakaata mō ngā tamariki mokopuna. He ata nā Te Māngai Pāho.



4. Whakaako – Te whakaū i te akonga o te reo Māori: Ngā kaupapa matua hei whakatutuki mā te Karauna

Kia nui ake ngā tamariki e ako ana i te reo Māori

Te wā	Ināianeī (0 ki te 2 tau te wā whakaaranga)
Te pokapū whakaemi	TeTāhuhu o te Mātauranga
Ngā raraunga o nāianeī	18,994 ngā tauira Māori, e 444 hoki ngā tauira Tauīwi kei roto i ngā kura rumaki reo Māori (ngā kaupae 1 me te 2) E 59,853 ngā tauira Māori, 105,763 hoki ngā tauira Tauīwi e ako ana i te reo Māori i roto i ngā kura reo Pākehā (ngā kaupae 3 ki te 5) ¹³

79. Ko te pūnaha mātauranga te hua kaha katoa a te kāwanatanga hei ako i te reo Māori. Heoi, ko te nuinga tonu o ngā tamariki i Aotearoa kāore e oi ana te ako i te reo Māori, ahakoa e piki haere ana te tokomaha e pērā ana. I te tau 2017, 185,000 ngā tauira i ngā kura here ā-ture tuatahi, i ngā kura ā-here tuarua hoki e oi ana te ako i ētahi punua āhuatanga o te reo i te kura, ā, neke atu i te 615,000 te hunga tamariki e iti ana te ako i te reo Māori, kāore rānei i te ako i te reo Māori.
80. Ka whakaū mātou kia ako tonu te tokomaha e ako ana i te reo Māori, ka mutu me mātua piki taua tokomaha. Mā tēnei pikinga e āwhina ki te whakarite i tētahi taiao hei tautoko i te whakarauratanga o te reo mā te tautoko i te mana, i te ako, i te whakamahinga anō hoki o te reo. Ka āwhina anō pea tēnei i te whakapikinga o te angitu o te Māori i te ao mātauranga me te oranga o te Māori i roto i ngā kura reo Pākehā mā te whakamana anō i te tuakiri Māori, i te reo Māori me te ahurea Māori.



He ata nā Te Tāhuhu o te Mātauranga.

81. E tirohia ana e mātou ētahi huarahi ināianeī hei whakatutuki i tēnei putanga matua hei wāhanga mō te whai a te kāwanatanga ki te whakaū i te whai wāhitanga o ia tamaiti ki te reo Māori puta noa i te pūnaha mātauranga. Tērā tonu ka pēnei te karawhiunga mahi a te kāwanatanga:
- ko te whakauru i te reo Māori ki ngā huarahi mātauranga katoa, ki ia whare kōhungahunga, ki ia kura tuatahi, ki ia kura takawaenga anō hoki kia tae rawa ake ki te tau 2025
 - ko te whakatipu i te nui me te kaha o ngā kaiako reo Māori hei kaimahi anga whakamua

13 Ministry of Education, Education Counts, <https://www.educationcounts.govt.nz/statistics/maori-education/maori-in-schooling/6040>

Kia nui ake ngā tāngata e koke ana ki tua o te mōhiotanga taketake ki te reo Māori

Te wā	Ināianei (0 ki te 2 tau te wā whakaaranga)
Te pokapū whakaemi	Te Tāhuhu o te Mātauranga me Te Puni Kōkiri
Ngā raraunga o nāianei	<p>Ka taea e te 3.5 ōrau o ngā tāngata o Aotearoa (148,395) te kōrero ngā kaupapa o ia rā, o ia rā ki te reo Māori, he hekenga tēnei i te 4.3 ōrau (160,527) o te tau 2001¹⁴</p> <p>I te tau 2017, e 40,285 ngā tāngata kua whai wāhi ki te ako i te reo i ngā kaupae i tua o te mōhiotanga taketake (i ngā whare kōhungahunga ki ngā kura mātauranga pakeke)</p> <p>I te tau 2017, e 8,843 ngā whakaotinga o ngā tohu reo Māori i te kaupae 2 o te NZQF, i runga ake rānei¹⁵</p>



He tauira pakeke i tētahi akoranga reo Māori kei te taumata o te mātauranga pakeke i Te Wānanga o Aotearoa. He whakaahua nā Adrian Heke.

82. Ko te ia o nāianei e whakaatu ana i te pateko o te tokomaha o ngā tāngata e matatau ana te kōrerotanga o te reo Māori. Me mātua whakapiki te tokomaha o te hunga e matatau ana ki te kōrero e puta ai te reo hei reo mō ia rā, e tutuki anō ai hoki ngā whāinga pae tawhiti o te Maihi Karauna.
83. E taea ana e ngā Kura mātauranga pakeke te tū hei kaikōkiri matua i te whakawāteatanga o ngā huarahi ako i te reo Māori ki te pakeke, ā, mā reira e tautoko te whakamahinga o te reo Māori i te kāinga me te tuku ihotanga o te reo i tētahi whakatipuranga ki tētahi. E tukuna ana ngā kaupapa whakangungu kaiako (ITE) ki te reo Māori e te pūnaha kura mātauranga pakeke, mā reira e āwhina ki te whakapakari i te kaha o te reo Māori o ngā kaiako.
84. I te tau 2016, neke atu i te 11,500 ngā tauira ukiuki (EFTS) i ako i te reo Māori i te kura mātauranga pakeke, ā, neke atu i te 8,000 o aua tauira ukiuki i te ako i ngā kaupae o raro (i ngā kaupae 1 ki te 4 o ngā tiwhikete).¹⁶
85. Ko te huarahi tika katoa hei whakapiki i te tokomaha o ngā kaikōrero matatau, ko te whakapakari i te mātauranga rumaki reo (ka kōrerotia i te kaupapa matua e whai ake ana). Heoi anō, he maha ngā wāhi e taea ai e te kāwanatanga te tautoko te pūnaha kura mō te rangatahi, te whakawātea huarahi hoki mō te toenga o te taupori hei whakapiki ake i te matatau ki te reo Māori:
- ko te whakarite kia whakapuakina e ngā kaikōrero reo Māori tā rātou i ako ai ki roto i ngā hāpori kaikōrero
 - ko te tautoko, ko te tuku whakapoapooatanga hoki ki ngā kaituku mahi kia whakawāteahia he mātauranga reo Māori ki ngā kaimahi me te utu i ngā kaimahi ka eke ki te taumata

¹⁴ Tatauranga Aotearoa, Tatauranga 2013

¹⁵ Te Tāhuhu o te Mātauranga / Te Amorangi Mātauranga Matua

¹⁶ <https://www.educationcounts.govt.nz/statistics/tertiary-education/participation>

- c. ko te waihanga hangarau tahiko ka āwhina i te tangata ki te whakapiki tonu i tō rātou matatau ki te reo Māori
 - d. ko te whakapiki i te tokomaha o ngā tāngata e ako ana, e whakatutuki ana hoki i ngā akoranga reo Māori i ngā kura mātauranga pakeke
 - e. ko te rangahau i ngā tauārai whai kiko kei mua i te hunga e hīkaka ana engari e kūrururu ana ki te whakapiki ake i ō rātou matatau.
86. E kaha ana te hononga o ēnei mahi ki ērā atu o ngā kaupapa matua e takoto ana i roto i tēnei rautaki.

Kia nui ake ngā tāngata e tino matatau ana ki te reo Māori

Te wā	Te pae waenga (e 3 ki te 5 tau te wā whakaaranga)
Te pokapū whakaemi	Te Tāhuhu o te Mātauranga
Ngā raraunga o nāianei	<p>Ka taea e te 10.6 ōrau o ngāi Māori te kōrero te reo Māori ki tētahi taumata pai, ki tētahi taumata tino pai rānei¹⁷</p> <p>I te tau 2017, 1,887 ngā tauira kua ono tau, kua neke atu rānei i tērā te roa o tā rātou whai wāhitanga ki te mātauranga rumaki reo Māori</p> <p>I te tau 2017, e 315 ngā whakaotinga tohu reo Māori i te kaupae 6 o NZQF¹⁸</p>



Te Whakaputanga o ngā Ika a Whiro o Te Panekiretanga o te Reo, Te Wānanga o Aotearoa, 2018. Nā Rawhitiroa Photography.

87. Mā tēnei kaupapa matua e tautoko te akoranga, te putunga reo me te whakamahinga o te reo Māori mā te tautoko i te tuku ihotanga i tētahi whakatipuranga ki tētahi me te whakatipu i te hunga e pūkenga ana ki te reo Māori.
88. E tohu ana ngā raraunga, kua āhua pateko te rahi o te hunga e tino matatau ana ki te reo Māori i ngā tau tata kua hori.¹⁹ E āhua taurite ana te hora o te hunga e “āhua pai ana” te mōhio ki te kōrero i ngā pakeketanga rerekē, engari e paku nui ake ana te taunga ki ngā pakeketanga rangatahi. Kua oti kē te kōrero, tērā tonu he pakeke ake ngā kaikōrero e tino matatau ana.

¹⁷ Tatauranga Aotearoa (2013), Te Kupenga 2013

¹⁸ Te Tāhuhu o te Mātauranga / Te Amorangi Mātauranga Matua

¹⁹ Tatauranga Aotearoa (2013), Te Kupenga 2013 – English (Corrected), <http://archive.stats.govt.nz/> Statistics; Statistics New Zealand (2014), Measuring te reo Māori speakers: A guide to different data sources, <http://archive.stats.govt.nz/>

89. Me mātua whai mātauranga rumaki reo e nui ake ai te hunga e ako ana i te reo, e matatau ana hoki te whakamahinga o te reo Māori, e whakaatuhia ana e ngā taunakitanga.²⁰ E pai ana, e tino pai ana rānei tā tētahi haurua o ngā tamariki me ngā rangatahi kua uru ki te kōhanga reo me te kura kaupapa kōrero i te reo Māori. E whakatauritea ana tēnei ki te 10 ōrau o te taupori Māori whānui. E mōhio ana mātou ka reorua ngā tamariki ka ako i ngā huarahi rumaki reo mō te takiwā o te ono ki te waru tau. I te rāngai kura tuatahi, i te rāngai kura tuarua here ā-ture hoki i te tau 2017, ko tōna 1560 ngā taura i roto i ngā kura rumaki reo²¹ i te tau tuawaru²².

90. I tōna taumata o te whai hua, he ara te mātauranga rumaki reo Māori e tīmata ana i te whare kōhungahunga ā haere tonu tae noa ki te kura mātauranga pakeke. I te tau 2014, e 22 ōrau o ngā whānau Māori i kōwhiri i te huarahi rumaki reo Māori mō ngā tau tīmatanga o te ako, heoi e 9.6 ōrau noa iho o ngā tamariki Māori i roto i ngā huarahi rumaki reo Māori i te kura tuatahi, i te kura tuarua rānei. Ko ētahi o ngā tauārai ko te iti o ngā huarahi rumaki reo Māori katoa i ētahi wāhi me te tawhiti i waenga i ngā haporī me ngā ratonga. Ko te kōwhiringa a ngā mātua anō hoki pea tētahi āhuatanga whakahirahira, ā, ka ākina tēnei e ngā tirohanga e pā ana ki ngā taumata rerekē o te kounga, ahakoa e whakaatu ana ngā raraunga e wātea ana, ka angitu ake ngā tamariki Māori i ngā wāhi rumaki reo.

Te whakaahua 7: Te matatau ā-pakeketanga

	Te tapeke	15–24	25–34	35–44	45–54	55+
Tino pai	5.0	2.7	5.3	4.5	3.3	10.0
Pai	5.6	5.5	5.3	5.7	4.9	6.8
Āhua pai	12.0	13.0	14.5	11.5	10.6	9.9
Kāore i te pai	32.1	32.7	33.2	33.7	31.6	28.9
Kāore i kō atu i ngā kupu me ngā kiānga ruarua	45.3	46.1	41.6	44.7	49.6	44.4

20 Tātauranga Aotearoa (2014). Ka mārō te aho tapu, ka tau te korowai: Te reo Māori findings from Te Kupenga 2013. E wātea ana i www.stats.govt.nz.

21 Ko te mātauranga rumaki reo Māori ngā wāhi ka pau te 51 ōrau o te wā, neke atu rānei, e whakaakona ana ngā marau ki te taura ki te reo Māori, i te whare kōhungahunga, i ngā kura hoki.

22 <https://www.educationcounts.govt.nz/statistics/maori-education/maori-in-schooling>

91. He nui tonu te mahi me oti hei whakatipu, hei whakapakari hoki i te rāngai mātauranga rumaki reo Māori. Ko ngā mahi e matapaetia ana i raro i tēnei kaupapa matua, ko te:
- whakapiki ake i te tokomaha me te kaha o ngā kaimahi rumaki reo Māori
 - whakapiki ake i te tokomaha o ngā taurua ka noho tonu ki roto i te mātauranga rumaki reo Māori
 - whakapai ake i te tokomaha me te hanganga o te pūnaha
 - whakapiki i te mōhio ki ngā painga o te mātauranga rumaki reo Māori
 - pāhekoheko tonu ki ngā rohe me ngā iwi mā Te Rāngai Kāhui Ako ā-Iwi ki te whakahoahoa ngātahi i ngā mahere mahi ā-rohe ka kōkiriha e ngā iwi hei whakatutuki i ngā momo hiahia puta noa i te rāngai.
92. Ka whai wāhi mai hoki pea te mātauranga kura mātauranga pakeke ki te kokenga o tēnei putanga matua, ka pērā anō te ako i te reo Māori i roto i ngā kura reo Pākehā. Ka taea e te kāwanatanga te hōpara tā ngā pūnaha e rua whai kia pai ake te tautokona o te whai wāhitanga ki ngā akoranga teitei mō te reo Māori.



He akoranga reo Māori kei te taumata o te mātauranga pakeke i Te Wānanga o Aotearoa. He whakaahua nā Adrian Heke.

5. Whakaatu – Te whakaū kia kitea, kia rangona, kia whakamahia hoki te reo Māori: He kaupapa matua hei mahi mā te Karauna

Kia nui ake te whakamahinga o te reo Māori i te kāinga, i te marae, i ngā hapori anō hoki

Te wā	Ināianei (0 ki te 2 tau te wā whakaaranga)
Te pokapū whakaemi	Te Puni Kōkiri
Ngā raraunga o nāianei	E 20.5 ōrau o ngāi Māori e mea ana whakamahia ai te reo Māori i te kāinga ²³ Ka waihangahia he huarahi ine anō



He ata nā Te Tāhuhu o te Mātauranga.

93. Ko tētahi o ngā tino karawhiunga mahi o te whakarauora reo, ko te whakarite wāhi rumaki reo - arā, he wāhi e taea ai te whakamahi, te whakapuaki hoki te reo Māori. Ko te kāinga me ngā wāhi i te hapori ngā huarahi e wātea ai te tangata ki te whakapuaki i te reo i ia rā, i ngā horopaki motuhenga, ā, mā reira e whakaū te akoranga o te reo i te kura, i ētahi wāhi mātauranga kē atu hoki.

94. Ka tuku tautoko a Te Mātāwai, i raro i te Maihi Māori, ki te hāpai i ngā karawhiunga mahi ā-hapori, ā-whānau hoki. I raro i te Maihi Karauna, me whakahāngai te Karauna i āna kaupapa here, i āna putanga me āna ratonga ki te tautoko i ngā karawhiunga mahi ā-hapori.
95. Nā reira, mātuatua ana te mahi ngātahi i runga i te huarahi o te whakatinana i tēnei kaupapa matua. I roto i te kāwanatanga, ko Te Tari Taiwhenua tētahi o ngā tino hoa mahi tahi, nā āna mahi toha pūtea ki ngā kaupapa ā-hapori me ana hononga ki ngā kaunihera. Ka nui ake tā ngā pāpāhotanga me ngā kaupapa pāhomatarau, tae atu hoki ki ngā kaupapa a Whakaata Māori, whakarite i ngā ritenga whai painga e whakamahia ai te reo Māori i ngā kāinga me ngā hapori.
96. Tērā tonu ka whai wāhi mai ēnei kaupapa ki te mahi tōtika a te kāwanatanga:
- ko te tuku haere i te pūtea Oranga Marae, e whai nei ki te whakapakari i te hanganga ā-kiko, ā-ahurea hoki o te marae, tae atu ki ngā kaikōrero me ngā kaikaranga
 - ko te whakatairanga i te reo Māori mā ngā pokapū whakarite i ngā kaupapa Whānau Ora, i runga anō i te whai wāhitanga o te reoruatanga ki ngā putanga o te huarahi o Whānau Ora
 - ko te whakatenatena i ngā whakahaere ā-motu, ā-rohe hoki e nui ana te toronga ki roto i ngā hapori, pērā i ngā whakahaere hākinakina, kia whakatairangahia te reo Māori hei reo mō ia rā.

Ka nui ake te whakawāteahia o ngā rauemi reo Māori e puritia ana e te Karauna

Te wā	Ināianei (0 ki te 2 tau te wā whakaaranga)
Te pokapū whakaemi	Te Tari Taiwhenua
Ngā raraunga o nāianei	Me waihanga tētahi huarahi ine

97. E putu ana ki Te Puna Mātauranga o Aotearoa te kohinga nui katoa o ngā tānga me ngā tuhinga reo Māori tae atu ki ngā hopukanga reo maha. E kīia ana ko tēnei kohinga te putunga nui katoa o ngā rauemi reo taketake.
98. E mea ana a Te Puna Mātauranga o Aotearoa ki te whakauru i ana kohinga ki te rorohiko, mātua rā ko ngā kohinga reo Māori. Ka mahi tahi te whare pukapuka me ngā iwi Māori me ētahi atu hoa, me ētahi hunga whai pānga hoki, i runga i te whāinga, tae rawa ake ki te tau 2030, kua piki te waihanga me te whakamahinga o ngā rauemi mātauranga kei te reo Māori. E whai wāhi nui ana hoki a Ngā Taonga ki tēnei kaupapa matua, inā rā, e tāwharau ana ia i ngā hopukanga reo me ngā whakaahua whakahirahira.
99. Kei roto i ngā pūranga kōrero a ngā pokapū Karauna ētahi kōrero whakahirahira kua tuhia ki te reo Māori. Ko te putunga nui katoa o aua momo kōrero e tiakina ana e Te Rua Mahara o te Kāwanatanga. Ka whai wāhi aua pūranga kōrero ki te whakapūmāutanga me te whakahoutanga o ngā tuhinga reo Māori, nā te mea kei roto i ngā tuhinga tawhito e whakaatuhia ana ngā mita ka kōrerohia e ngā iwi.



100. Ko ēnei pea ētahi o ngā mahi a te kāwanatanga:
- ko te whakawhanake i ngā kaupapa here hou mō te whakaurunga o ngā pūranga kōrero ki te rorohiko i te taha o ngā iwi me ngā hapū
 - ko te whakapai ake i te huarahi ka whāia e te kāwanatanga i tēnei wā hei waihanga, hei whakaputu hoki i ngā mātauranga hou e pā ana ki te Māori, ki te reo Māori anō hoki, e māmā ake ai te kitea o aua kōrero, te toronga hoki ki aua.

Kia nui ake ngā ratonga tūmatanui ka tukuna ki te reo Māori hei toronga

Te wā	Ināianei (0 ki te 2 tau te wā whakaaranga)
Te pokapū whakaemi	Te Kawa Mataaho me Te Taura Whiri i te Reo Māori
Ngā raraunga o nāianei	<p>E 59.7 ōrau o ngā mema o Te Pūkenga Here Tikanga Mahi e rongō ana i te tautoko kia ākona te reo Māori i te wāhi mahi</p> <p>E 78.6 ōrau o ngā mema o Te Pūkenga Here Tikanga Mahi e rongō ana i te tautoko kia whakamahia te reo Māori i te wāhi mahi²⁴</p> <p>E 40 ngā kaiwhakawhiti i te reo Māori kua tohu mai e mahi ana rātou i taua mahi, ka mutu e whai ana i te raihana hei Kaiwhakawhiti reo ā-tuhi, hei Kaiwhakawhiti reo ā-waha hoki, ko tētahi rānei o aua karangatanga²⁵</p>



He wāhanga matua, i te whakapakaritanga o te reo Māori ki Aotearoa, te whakawāteatanga o ngā ratonga tūmatanui maha ake i te reo Māori. He whakaahua nā Adrian Heke.

101. Ko tētahi o ngā mahi nui ka taea e ngā pokapū kāwanatanga te mahi hei whakamāori noa i te whakamahinga o te reo Māori, ko te whakawātea i ngā huarahi maha ake e toro ai te tangata ki ngā ratonga kāwanatanga ki te reo Māori. I te piki haeretanga o te tokomaha e matatau ana ki te kōrero i te reo Māori, kāore e kore ka piki anō te hiahia kia torohia ngā ratonga ki te reo Māori. Me takatū te rāngai tūmatanui ki tēnei tūāhuatanga.
102. Kua oti kē i te nuinga o ngā pokapū kāwanatanga te tuku kōwhiringa kia wātea ētahi ratonga matua ki te reo Māori. Kei roto pea i ēnei kōwhiringa ko te whai wāhitanga ki ngā ratonga mā ngā kaiwhakawhiti reo, mā te whakaū kia puta ngā pānui ki ngā reo e rua, arā ki te reo Pākehā me te reo Māori, me ētahi kōwhiringa kia whiwhi te tangata i ngā ratonga ki te reo Māori, ki te reo Pākehā rānei. I te whai kia nui ake te wātea o ngā ratonga kāwanatanga i te ipurangi, me whakanui ake te wātea mai o ngā kōwhiringa reo Māori.
103. He mahi nui tā ngā kaiwhakawhiti reo ā-tuhi kua whai raihana, e taea ai e ngā tari kāwanatanga te whakahaere ā rātou mahi ki te reo Māori. I te nui ake o te whai a ngā pokapū kāwanatanga kia tukuna ngā ratonga me ngā rauemi ki te reo Māori, arā te mōreareatanga o te iti rawa o te hunga whakawhiti reo e whakawhāiti ana i te whai wāhitanga mai ki aua ratonga.
104. Mā Te Kawa Mataaho me Te Taura Whiri i te Reo Māori tēnei mahi e arataki, i runga i ō rāua tūranga matua e whakapakari ana i ngā pūkenga o ngā tari kāwanatanga, e tautoko ana hoki i ngā whakamāherehere ā-tari. Ko ētahi pea o ngā mahi a te kāwanatanga:

24 Cantal C, Plimmer G, Qumseya T, A Survey (2016) *Support to Learn and Use Te Reo in New Zealand Public Services: A Survey Report Prepared for the Māori Language Commission Te Taura Whiri i te Reo Māori*, Victoria University of Wellington

25 Te Taura Whiri i te Reo Māori

-
- a. ko te whakawhanake i ngā rauemi hei āwhina i ngā pokapū kāwanatanga ki te waihanga mahere reo
 - b. ko te whakawhanake i tētahi anga hei whakapakari i ngā pūkenga reo Māori puta noa i ngā pokapū e whakaatahia ai te pakeke o taua pokapū, e taurite ai hoki te whakamahinga o ngā rauemi
 - c. ko te whakawhanake i ngā mātāpono mō ngā kōrero reo Māori kei ngā pae tukutuku a te kāwanatanga i roto i te horopaki o ngā mahi a te Paerewa mō ngā Ratonga Tahiko
 - d. ko te auau o te ine i te kaha o te rāngai tūmatanui i roto i te wā, mā ngā huarahi pērā i tā Te Kawa Mataaho kohi i ngā raraunga pūmanawa tangata i ngā tari
 - e. ko te whai ara hei āta whakapiki ake i te tokomaha o ngā kaikōrero i te reo Māori e mahi ana i te rāngai tūmatanui, ko te whakapiki hoki i te tokomaha o ngā kaiwhakawhiti reo Māori ā-tuhi me te whakaū anō i ngā paerewa o te kounga mā roto mai i te aromatawai me te whakawhiwhi tohu.

Kia nui ake ngā taone me ngā taone nui e tauawhi ana i te reoruatanga

Te wā	Te pae waenga (e 3 ki te 5 tau)
Te pokapū whakaemi	Te Tari Taiwhenua
Ngā raraunga o nāiane	Me waihanga ngā huarahi ine



I mahi tahi a Fletcher Construction me Te Kura Kaupapa Māori o Te Rito kia reorua ngā tohu mō te rōri i Pekepeka ki Ōtaki.

105. Mā te kāwanatanga e tuku tautoko ki ētahi takiwā kei reira te hiahia o te kaunihera, o ngā hapori, o te rāngai tūmataiti hoki ki te mahi ngātahi ki te whakatairanga i te reo Māori. He huarahi ngā taone reorua e whakaritea ai he wāhi (he “takiwā” rānei) e rere noa ai te reo Māori i ia rā. Mā te kitea o ngā pānui reorua e tautoko aua karawhiunga mahi.

106. vKa whai tautoko, ka whai kaha hoki ngā kaikōrero kua matatau kē ki te reo Māori i ngā takiwā nei, ki te whakamahi i te reo Māori i ngā wāhi tūmatanui, ā, mā konā e rangona ai te reo e te hunga e tīmata ana ki te ako i te reo Māori.

107. Mā ngā hapori me ngā kaunihera tonu e kōkiri ngā kaupapa hei whakatū i ngā taone reorua me ngā taone nui e reorua ana. Ko te mahi a te kāwanatanga, mātua rā, ko te whai māramatanga mō te tautoko e taea ana e ia, e tika ana hoki māna e tuku hei āwhina i te angitu o ēnei kaupapa.

108. Mā Te Tari Taiwhenua tēnei mahi e arataki i te taha o ngā pokapū matua pērā i a Te Puni Kōkiri. Ka taea e te kāwanatanga te tautoko ēnei karawhiunga mahi mā te:

- whakapā tuatahi atu ki te kaunihera ki te tautuhi i te tautoko e taea ana e te kāwanatanga te tuku
- tuku ārahi ki ngā kaunihera e hiahia ana ki te whakatairanga i te reoruatanga, pērā i ngā aratohu mō ngā pānui reorua, me te tautoko i ngā akoranga ngātahi i waenga i ngā rohe e pā ana ki ngā huarahi rerekē
- whakawhanake i tētahi huinga ratonga, aro whānui nei, me ngā tautoko ka wātea ki ngā taone iti me ngā taone nui e hiahia ana kia reorua. Ko tētahi huarahi tautoko pea ko te tuku pūtea taituarā, ko te tuku pūtea rānei hei whakangungu tangata, hei whakatū hui hoki.

6. Te whakatinana me te aroturuki

Te whakatinanatanga

109. Ka whai māngai ia pokapū i tohua ai hei kaiwhakaemi i tētahi, i ētahi rānei o ngā kaupapa matua ki tētahi huinga ā-Tumu. Ka pōhiritia hoki te Tumu Whakarae o Te Mātāwai kia tae mai, hei whakaū i te rurukutanga ki te Maihi Māori. Mā ēnei pokapū e mahi tahi ki te:
- aro turuki i te kokenga o te whakatinanatanga o te rautaki
 - whakaaro ki ngā rauemi e hiahiatia ana
 - whakaputa pūrongo mō te whakatinanatanga o ngā mahi, ki te whakaputa hoki i ngā taunakitanga kua ine i te kounga me te nui o te kokenga e tutuki haere ana
110. Ka mahi tahi ngā pokapū whakaemi o ia kaupapa matua ki ētahi atu pokapū e hāngai ana, ki te whakahaere i tētahi mahere ruruku e tutuki ai te pānga takitini. Nō rātou e pērā ana, ka whai kupu ārahi rātou i a Te Mātāwai, ka whakaū hoki i te rurukutanga o ngā mahi ki te Maihi Māori.
111. Mā Te Taura Whiri i te Reo Māori e arataki te rurukutanga o te whakatinanatanga o te rautaki, i raro i Te Ture mō Te Reo Māori 2016. Ka tautoko a Te Taura Whiri i te Reo Māori i ngā pokapū tuku ratonga ki te marea ki te waihanga i ngā mahere reo Māori, inā rā, koinā tētahi o ana huarahi matua hei whakatinana i te rautaki nei.

Te aro turuki, te arotake me te tuku pūrongo

112. Mā Te Puni Kōkiri e arataki te waihanga o tētahi anga hei aro turuki, hei arotake hoki i te Maihi Karauna, i te taha o Te Taura Whiri i te Reo Māori. Ka whakaurua ki te anga nei ētahi huarahi ine, ētahi tohu hoki hei pūrongo i te whakatutukihanga o ngā whāinga maioro, o ngā putanga me ngā kaupapa matua. Ka mahi tahi a Te Puni Kōkiri me Te Mātāwai ki te whakaū i te hononga i waenga i ngā mahi aro turuki me te arotakenga o te Maihi Karauna me ērā o te Maihi Māori, ki te taumata e taea ana.
113. E whāiti ana ngā raraunga o te wā kua kohia mō te reo Māori, ā, ka whakatewhatewha mātou i ngā huarahi hei kohi i ngā raraunga hou hei whakakī i ngā āputa kua tohua. Anei ētahi o ngā puna raraunga ka taea pea te toro hei whakakī i ngā āputa nei:
- te tatauranga ā-motu
 - Te Kupenga: Te Uiui mō te Ora o te Māori
 - Te Uiui ā-Pāpori Whānui
 - ngā raraunga whakahaere.
114. Ka kawea he arotake i te wā e rere ana ngā kaupapa o te Maihi Karauna, hei te mutunga hoki o te kaupapa, i ngā wā kua whakaaetia. Ka arotake ia tari i ā rātou ake mahere reo i ia taurua hei tohu i te kokenga i te taha o ngā whāinga ā-whakahaere me ngā whāinga o te Maihi Karauna.

Te Arotake

115. E ai ki ngā whakaritenga o Te Ture mō te Reo Māori 2016, ka āhei tā te Minita Whanaketanga Māori whakakapi, tāna panoni rānei i ngā rautaki Maihi Karauna i runga i tāna e pai ai. Ka whakahaerehia tēnei arotake i mua i te paunga o te rautaki hei te tau 2023.

7. Te huarahi hei urupare

116. E hiahia ana mātou ki te rongō i ōu whakaaro e pā ana ki tēnei rautaki hukihuki. E tino hiahia ana mātou ki ōu whakaaro mō ngā pātai e whai ake nei:

Ngā pātai hei ārahi i te urupare

- E whakaae ana koe ki te whāinga tāhuhu o te rautaki e kī nei, 'KIA MĀHORAHORA TE REO – ki ngā wāhi katoa, mā ngā huarahi katoa, i ngā tāngata katoa, i ngā rā katoa'?
- E whakaae ana koe kia kaingākauria e Aotearoa te reo Māori hei wāhanga matua mō tō tātou tuakiri ā-motu? He aha, ki ōu whakaaro, ngā mea me whai e tutuki ai tēnei?
- E whakaae ana koe ki te whāinga kia 1,000,000 ngā tāngata o Aotearoa e mōhio ana ki te kōrero i te reo Māori mō ngā mea taketake i mua i te tau 2040? He aha, ki ōu whakaaro, ngā mea me whai e tutuki ai tēnei?
- E whakaae ana koe ki te whāinga kia 150,000 ngā Māori e kōrero ana i te reo Māori hei reo mātāmua (kia pērā rānei i tō rātou kaha ki te kōrero i reo kē, kia kaha ake rānei) i mua i te tau 2040? He aha, ki ōu whakaaro, ngā mea me whai e tutuki ai tēnei?
- E whakaae ana koe ki ngā kaupapa matua kua whakatakatoria ki te rautaki?
- Me pēhea tā te Kāwanatanga eke ki te taumata i tana waihanga i ngā whakaritenga e kōkiri ai te whānau, te hapū, te iwi me ngā hāpori i ā rātou ake kaupapa reo Māori?
- He kōrero atu anō āu e pā ana ki te rautaki Maihi Karauna?

117. Ka whakatakoto hoki mātou i aua pātai tonu rā mā te pāho pāpori, mā te whakahaere kōwhiringa ā-ipurangi hoki i ōna anō wā. E āhei ana tō urupare mā te pāho pāpori rānei, mā tētahi uiui ā-ipurangi rānei, mā te whakaoti rānei i tētahi tāpaetanga ā-tuhi e whānui ana. Torona te whārangi Pukamata a Te Puni Kōkiri ki te whakautu i ngā kōwhiringa, ki te whakatakoto kōrero hoki (www.facebook.com/tepunikokiri).

118. Whakapā atu ki te pae tukutuku a Te Puni Kōkiri, ki (<https://www.tpk.govt.nz/maihi-karauna>) kia kitea ai te uiui ā-ipurangi, kia tīkina rānei te puka tāpaetanga. E āhei ana hoki tāu tiki tuhinga ā-pepa i ngā tari ā-rohe o Te Puni Kōkiri (<https://www.tpk.govt.nz/en/whakapa-mai>).

119. E ahei ana tāu tono i tō urupare, i mua i te **5 karaka i te ahiahi o te 28 o Mahuru, i te au 2018**, ki: Maihi. Karauna@tpk.govt.nz, e āhei ana hoki tāu tuku ā-poutāpeta ki:

Maihi Karauna Strategy
c/o Te Puni Kōkiri
PO Box 3943
Wellington 6140

Tā mātou whakamahi i ō pārongo

120. Ka whakaputa mātou i tētahi whakarāpopototanga o ngā urupare ā muri i te rā aukati. Ki te kore koe e āta kī mai kāore nei koe e pīrangi ana kia pānuitia tō urupare ki te marea, ka whakauru hoki pea mātou i ngā kōrero o tāu urupare ki tēnei pūrongo ka whakaputaina.

121. Kia mataara hoki; e herea ana ngā tono ki te Official Information Act, 1982. Mehemea ka mahara koe me kaua e tuku i ētahi o ngā pārongo o tō urupare, tēnā koa, whākina mai ko ēhea wāhanga, ngā take hoki e kore ai e tukuna i raro i te Official Information Act 1982.

Te Āpitianga A

Ngā ariā hei tūāpapa mō te rautaki

Ngā āhuatanga o te whakarite mahere reo

Kua waihangahia ngā putanga, ngā whāinga rongomaioaro me ngā kaupapa matua i runga i te māramatanga ki ngā āhuatanga o te whakarite mahere reo i hua ake ai i ngā ariā me ngā mahi o te ao whānui e pā ana ki te whakarauora reo.

Ka noho te whakarite mahere reo hei pūtake mō ngā kaupapa here me ngā mahi e whai ana ki te whakaaweawe i ngā whanonga ā-reo. I ahu mai ngā āhuatanga o te whakarite mahere reo me ngā kaupapa here e whai ake nei i ngā taunakitanga o te ao whānui, ka mutu, kua panonitia hei ārahi i te waihanganga o te Maihi Karauna me tōna whakatinanatanga.

Ko ngā āhuatanga o te whakarite mahere reo i te horopaki o Aotearoa

E whai ake nei ngā āhuatanga o te whakarite mahere reo kua panonitia kia hāngai ki a Aotearoa.

- **Critical Awareness (Te Mārama Pū):** E mōhio ana a Aotearoa whānui kua tata te korehāhā o te reo, e whakaae ana me mātua whakarauora te reo, e mārama ana hoki ki ngā mahi a te takitahi, a te whakahaere hoki hei tautoko i te whakarauoratanga.
- **Status (Te Mana):** E mārama ana a Aotearoa whānui ki te uara o te reo Māori, e whakaae ana hoki ko te reo tētahi wāhanga o tō tātou tuakiri ā-motu.
- **Acquisition (Te Ako):** Kua nui ake ngā huarahi i Aotearoa whānui hei ako i te reo Māori i te taumata e tautoko ana i te whakamahinga o te reo.
- **Corpus (Te Puna):** Ka titoa he kupu hou, he kīanga hou, he paerewa hou hoki e kounga ana, kātahi ka whakawāteatia hei tautoko i te whakamahinga o te reo Māori.
- **Use (Te Mahi):** Ka taea e Aotearoa whānui te kōrero, te whakarongo, te pānui, te tuhituhi, te mārama hoki ki te reo Māori i te taumata e tautoko ana i te whakamahinga o te reo, ka mutu e wātea ana ki a rātou ngā taiao me ngā takiwā e rere ai te reo.

Kua waihangahia ētahi āhuatanga e rua atu anō, ā, ka whāia pea ēnei e ētahi pokapū hei tautoko i ngā āhuatanga e rima o runga ake nei, hei whakaū hoki i te whakawhitinga o ngā āhuatanga e rima ki ngā kaupapa here me ngā kaupapa here ā-whakahaere anō hoki i roto i ngā pokapū. Anei aua āhuatanga:

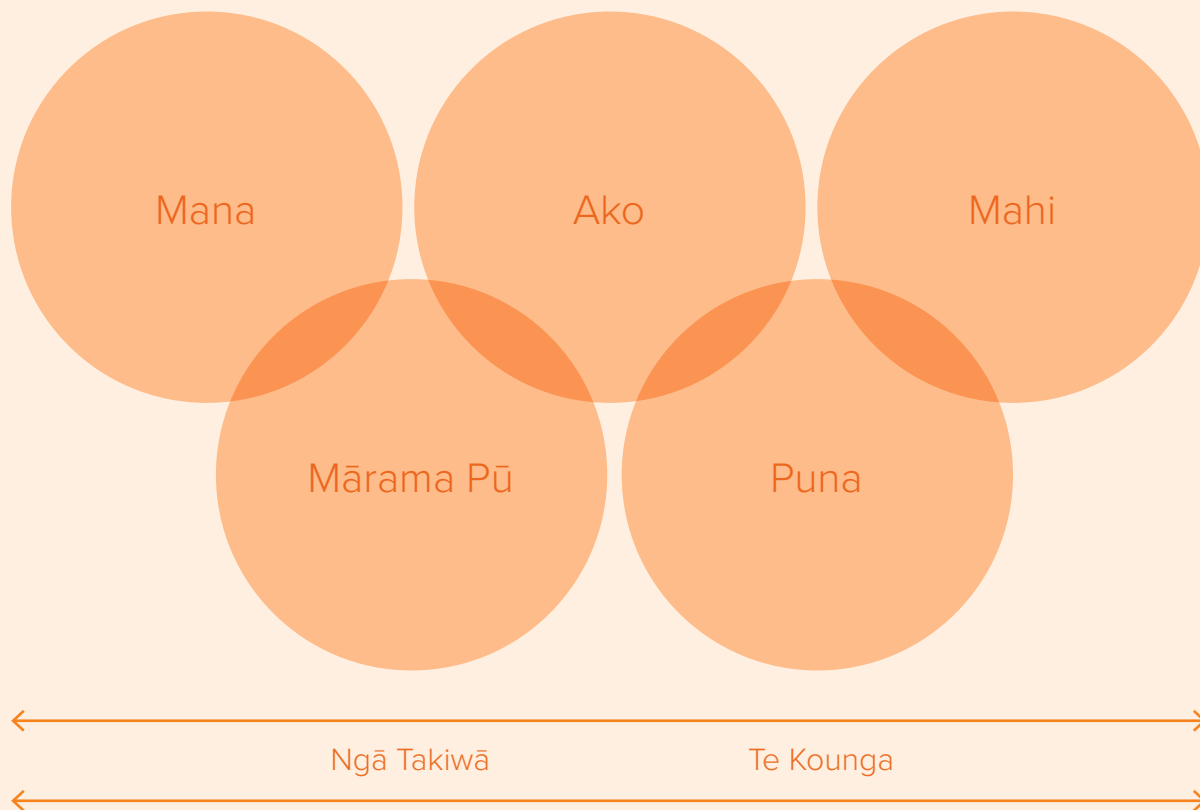
- **Ngā Takiwā:** E mārama ana te reo Māori, e whakamahia ana hoki i ngā wāhi maha, i ngā horopaki maha, e te tokomaha.
- **Te Kounga:** I tēnei horopaki, ko te tikanga o te kounga, e kaingākauria ana te reo Māori, ā, kei te taumata e hāngai ana ki ōna horopaki e tika ana

Te tauira ZePA

E arotahi ana te tauira ZePA ki te hiranga o te neke i te tūranganga o tētahi tangata, o tētahi hapori rānei i tētahi pae, i te “kore” (kāore he pāhekohekotanga) ki te “pō” (kua nui ake te māramatanga me te ngākaunui) ki te “awatea”, arā kua pāhekoheko te tangata ki te reo, kua whakamahi hoki i te reo.

Koinei te tūāpapa mō te Maihi Karauna. Mā te whakaū i te uara o te reo Māori ki ngā tāngata o Aotearoa, ka neke tātou i te “kore” ki te “pō”. Mā te whakaū i ngā huarahi e ako ai ngā tāngata o Aotearoa i te reo, ka nekehia te tangata i te “pō” ā-ngākaunui nei ki te “awatea” o te whakamahinga. E kitea ana tēnei i te whakaahua 8 e whai ake nei.

Te whakaahua 8: E hono ana ngā āhuetanga e rima o te whakarite mahere reo, ka mutu me tautoko i runga i te arotahi ki ngā takiwā me te kounga o te reo



Te whakaahua 9: Te Takatū o Aotearoa Whānui ki te whakamahi i te reo Māori: E whai ana kia “neke katau”

	Whakanui		Whakaako	Whakaatu	
Ngā waiaro me ngā whanonga	Whakaoho	Whakanui	Whakaako	Whakamahi	Whakamana
	Kore	>	Pō	>	Awatea

Te Āpitianga B

He rārangi kupu me ngā tikanga

Te reo Māori kei te taumata o o te mōhio taketake	Te kaha ki te kōrero mō ngā mea māmā me ngā mea taketake ki te reo Māori, e ōrite ana ki te kaupae 2 o te matatautanga i inea ai e te uiui o Te Kupenga.
Ko te kōrerorero i te reo Māori	He mea ine e te Tatauranga ā-Motu, ka whakaputa tatauranga e pā ana ki te tokomaha o ngā tāngata o Aotearoa e kaha ana ki te kōrero mō ngā kaupapa o ia rā, o ia rā ki te reo Māori. E hāngai ana pea ki te matatautanga i te kaupae 3 e ai ki ngā inenga o te uiui o Te Kupenga.
Ngā Hinonga Karauna	Ngā rōpū whakahaere kei roto i te Rāngai Kāwanatanga e tū tawhiti ana, ā-ture nei, i te Karauna. E kore ēnei e ārahina e ngā Minita pērā i ngā tari tuku ratonga ki te marea. Hei tauira, ko Te Kaporeihana Āwhina Hunga Whara, ko ngā Poari Hauora ā-Takiwā me ngā Poari o ngā Kura.
Ngā takiwā	He wāhi ēnei e rere noa ai te reo Māori i ia rā, i ia rā. Kei roto i tēnei karangatanga ko te whānau, ko te wāhi mahi, ko te mātauranga, ko ngā wāhi hākinakina, pāpori hoki.
Te mātauranga reo Pākehā	Ko te kaupae 3 ki te 5 (Ko te reo Māori i ngā kura reo Pākehā), hei reira ngā tauira ako ai i Te Reo Māori hei kaupapa ako, ākonga ai rānei ki ngā marau ki te reo Māori, tae atu ki te 50 ōrau o te wā. Kāore he reo Māori i te Mātauranga, hei reira te tauira ako ai i ngā kupu māmā katoa, i ngā mihi, i ngā waiata rānei ki te reo Māori (ko te kaupae 6 - Taha Māori), karekau rānei he paku reo Māori e ākonga ana.
Ngā Tauira Ukiuki (EFTS)	He inenga i te tokomaha o ngā tauira kei ngā kura mātauranga pakeke. Neke atu pea i te kotahi te tauira harangotengote kei roto i te EFTS kotahi.
He hinonga kua whai pūtea	Tirohia te Hinonga Karauna
Kaitiakitanga	Ko te mahi tapu hei kaitiaki mō tētahi taonga, mō tētahi rawa rānei.
Kapa haka	He whakangahau ā-ahurea, otirā hei reira tino puta ai te haka me te waiata.
Kura kaupapa	He kura tuatahi e whakaakona ai ngā kaupapa ki te reo Māori, i roto i te horopaki o te ahurea Māori.
Maihi	Ko ngā papa roa e rua o te wharenuī ka tūtaki ki te koruru.
Te mātauranga rumaki reo Māori	Ko te kaupae 1 ki te 2 (Ko te mātauranga rumaki reo Māori) - hei reira ākonga ai ngā tauira ki ētahi, ki te katoa rānei o ngā marau ki te reo Māori mō te 51 ōrau o te wā, neke atu rānei i tērā.

Te kaupae 2, o runga ake rānei o te NCEA	Ko te NCEA tētahi tohu kura tuarua, ka whāia, i te nuinga o te wā, i te tau 12.
Ngā tari kāore e tuku ratonga ki te marea	Ko ngā tari kāwanatanga kāore e tuku ratonga ki te marea, e kaha ake ana te noho motuhake i te kāwanatanga. Kei roto i tēnei karangatanga ngā pokapū pēnei i Te Ope Kātua o Aotearoa me Ngā Pirihimana o Aotearoa.
Te kaupae 2 o te NZQF	He tiwhikete kei te kaupae 2 o Te Taura Here Tohu Mātauranga o Aotearoa e whiwhi ai te tangata ki te mātauranga tūāpapa, ki ngā pūkenga hoki mō tētahi wāhi mahi/ kaupapa mahi, mō tētahi kaupapa ako rānei.
Te kaupae 6 o te NZQF	Mā te tiwhikete, mā te pōkaitahi rānei kei te taumata 6 o Te Taura Here Tohu Mātauranga o Aotearoa e whiwhi ai te tangata ki te mātauranga ā-ariā, ā-hangarau hoki, tae atu hoki ki ngā pūkenga, ko tētahi rānei o aua āhuetanga, i roto i tētahi āhuetanga, i ētahi āhuetanga rānei o tētahi horopaki whāiti/ā-rautaki.
Ohu	He rōpū mahi, he mahi ngātahi nā tētahi rōpū
PSA	Te Pūkenga Here Tikanga Mahi - te uniana ka tū hei māngai mō te kāwanatanga, mō ngā hinonga nā te kāwanatanga, ngā kaunihera, ngā poari hauora me ngā rōpū hapori.
Ngā tari tuku ratonga ki te marea	Ko ngā tari tuku ratonga ki te marea e tata ana ki ngā Minita, kei raro i te maru ā-ture o te Karauna. Hei tauira, ko Te Puni Kōkiri me Te Tāhuhu o te Mātauranga.
Rangatahi	Youth, young person.
Tūāwhioranga	Ko te tūāwhiorangi reo irirangi. E whakahaerehia ana tēnei e Hīkina Whakatutuki mā te Karauna. Kei roto i tēnei te whakahaeretanga o te tuku i te mana whakamahi.
Tāngata matatau ki te reo	Ko te hunga e matatau ana ki te reo Māori. E āhua rite ana ki te tangata kua eke ki te kaupae 4, ki te kaupae 5 rānei o te matatau i inea ai e te uiuinga o Te Kupenga.
Te Kupenga	He uiui tēnei i whakahaerehia e Tatauranga Aotearoa i te tau 2013 me te tau 2018 i muri i ngā Tatau ā-Motu, i tētahi rahinga o te taupori Māori e pakeke ake ana i te 15 tau.
Te Mātāwai	He hinonga ā-ture i whakatūria ai e Te Ture mō te Reo Māori 2016 hei māngai mō ngā iwi me ngāi Māori ki te arataki i ngā mahi whakarauora i te reo Māori.
Tikanga	He mahi, he huarahi whakatutuki kaupapa i ahu mai i te ahurea Māori. Ko te pūtake o te kupu, ko te 'tika', nō reira ko te mahi tika tēnei e ai ki te tirohanga Māori.
Whānau Ora	He huarahi e titiro ana ki ngā taha katoa o te whānau hei tuku ratonga e whai ana ki te whakatairanga i ngā wawata o te whānau.

Te Rārangi Whakaahua

Front Cover	He kōtiro Māori ki ASB Polyfest 2017, Tāmaki Makaurau. Nā Teneya Te Whata te ata.
Page 2	Hōnore Nanaia Mahuta, Te Minita Whanaketanga Māori.
Page 4	Te Whakaputanga o ngā Ika a Whiro o Te Panekiretanga o te Reo, Te Wānanga o Aotearoa, 2018. Nā Rawhitiroa Photography.
Page 8	Ko tētahi o ngā wāhanga matua o te whāinga tāhuhu anamata e noho ai te reo Māori hei wāhanga māori tonu i te ao o ia rā, ko te tuku ihotanga o te reo i tētahi whakatipuranga ki tētahi. [kāore te puna e whakaaturia]
Page 9	He ata nā Deaf Aotearoa mai i te puka o "Let's Talk – 25 Signs for Māori Concepts".
Page 10	Te Rangatū mō te Wiki o te Reo Māori, 2017. He ata nā Te Taura Whiri i te reo Māori. 'Ō Mātou Reo', He rōpū taunaki wāhine Ihirama i te Hāpori reo Māori. He ata nā Sylvie Dickson.
Page 11	Kua whakaaturia tētahi whāinga kia noho te reo Māori hei wāhanga matua mō te tuakiri o ngā tāngata katoa o Aotearoa.
Page 12	Ka takoto tētahi tūāpapa mārō mō te tipuranga o te reo Māori hei anamata i te tokomaha ake o ngā tāngata o Aotearoa e kōrero Māori ana ki tōna taumata taketake. He whakaahua nā Adrian Heke.
Page 14	E kīia ai he reo ora, he takWWe nui kia whakamahia te reo Māori i te mahi me ngā horopaki pāpori, i te kāinga anō hoki. He whakaahua nā Adrian Heke.
Page 16	He take nui whakaharahara te taiohi e tutuki ai ngā whāinga o te Maihi Karauna.
Page 18	Ko ngā mātanga kaikōrero ngā kaiako o ngā rangatira o te whakatipuranga e heke iho nei (i te kāinga me te kura). Te Whakaputanga o ngā Ika a Whiro o Te Panekiretanga o te Reo, Te Wānanga o Aotearoa, 2018. Nā Rawhitiroa Photography. Pāhekoheko ai ngā tāngata e mahi ana i te rāngai tūmatanui ki ngā tāngata o Aotearoa puta noa i te motu mā te tuku ratonga tūmatanui, nō reira he wāhanga nui tō rātou i te whakarauoratanga o te reo. He whakaahua nā Adrian Heke.
Page 21	Te Rangatū mō te Wiki o te Reo Māori, 2017. He ata nā Te Taura Whiri i te reo Māori.
Page 23	Ka nui ake te reo me ngā tikanga Māori ka whakaurua ki te whakawhanaketanga o ngā kaupapa here a te kāwanatanga me te hoahoatanga o ngā ratonga pēnei i ngā wāhi o te whanaketanga ā-pāpori. He whakaahua nā Adrian Heke.
Page 28	He taura pakeke i tētahi akoranga reo Māori kei te taumata o te mātauranga pakeke i Te Wānanga o Aotearoa. He whakaahua nā Adrian Heke.
Page 29	Te Whakaputanga o ngā Ika a Whiro o Te Panekiretanga o te Reo, Te Wānanga o Aotearoa, 2018. Nā Rawhitiroa Photography.
Page 31	He akoranga reo Māori kei te taumata o te mātauranga pakeke i Te Wānanga o Aotearoa. He whakaahua nā Adrian Heke.
Page 34	He wāhanga matua, i te whakapakaritanga o te reo Māori ki Aotearoa, te whakawāteatanga o ngā ratonga tūmatanui maha ake i te reo Māori. He whakaahua nā Adrian Heke.
Page 36	Ka puta i ngā taone reorua ngā wāhi e whakamahi ai ngā kaikōrero Māori i te reo i ngā wāhi tūmatanui. He whakaahua nā Adrian Heke.



Disclaimer

The information contained in this publication is for general information only. While every effort has been made to ensure the accuracy of the information, because the information is generalised, its accuracy cannot be guaranteed. Readers are advised to seek independent advice on particular matters and not rely on this publication. No liability is assumed by Te Puni Kōkiri for any losses suffered directly or indirectly by any person relying on the information contained in this publication.

Creative Commons

Creative Commons Attribution-Noncommercial-Sharealike 4.0 New Zealand Licence.

Crown copyright ©. Te Whakahihioko i te Ōhanga Māori Powering up the Māori economy published by Te Puni Kōkiri is licensed under a Creative Commons Attribution-Noncommercial-Sharealike 4.0 New Zealand Licence. Please note that neither the Te Puni Kōkiri emblem nor the New Zealand Government logo may be used in any way which infringes any provision of the Flags, Emblems, and Names Protection Act 1981 or would infringe such provision if the relevant use occurred within New Zealand.



Te Kāwanatanga o Aotearoa

tpk.govt.nz/tohureorua
#tohureorua

