

Mōkai Pātea

Waitangi Claims Trust

Mandate Hui

15 – 23 June 2019

Introductions

- ▶ Mōkai Pātea Waitangi Claims Trust
- ▶ Te Puni Kōkiri Observers
- ▶ Independent Returning Officer Dale Ofsoke of Independent Election Services Ltd

Mōkai Pātea Waitangi Claims Trust

Trustees

- ▶ Tumu Mokai & Trustee Ihakara Hunter, Barbara Ball, Te Rina Warren, Hari Benevides, Moira Raukawa Haskell, Utiku Potaka, Thomas Curtis, Robert Martin, Maraea Bellamy

Team

- ▶ Programme Manager - Lavinia Jacobsen
- ▶ Hapū/ Iwi Facilitator - Richard Steedman
- ▶ Administration/ Accounting Services - Contract with MPS (Shari Chase MPS Iwi Administrator)
- ▶ Legal advice - Leo Watson

Agenda

- ▶ Hui Kawa
- ▶ Purpose of Mandate
- ▶ Mōkai Pātea Nui Tonu
- ▶ Claimant Community
- ▶ Mandate Strategy & Voting process
- ▶ Mandate Resolution
- ▶ General Update
- ▶ Questions & Answers

Hui Kawa

- ▶ To ensure all hui attendees hear the information presented and give people the opportunity to ask questions
- ▶ Questions at the end please
- ▶ Handout available at the end & website has mandate information
- ▶ Respect each other
- ▶ Welcome to take photographs of slides
- ▶ Social Media **no live streaming.**
- ▶ We are Video recording, to provide a record of proceedings. Some portions may be used for media or promotional footage in the future
- ▶ Media / Journalists? We will be available to meet at the conclusion for interviews. Leaving Question time for our intended audience Mōkai Pātea members

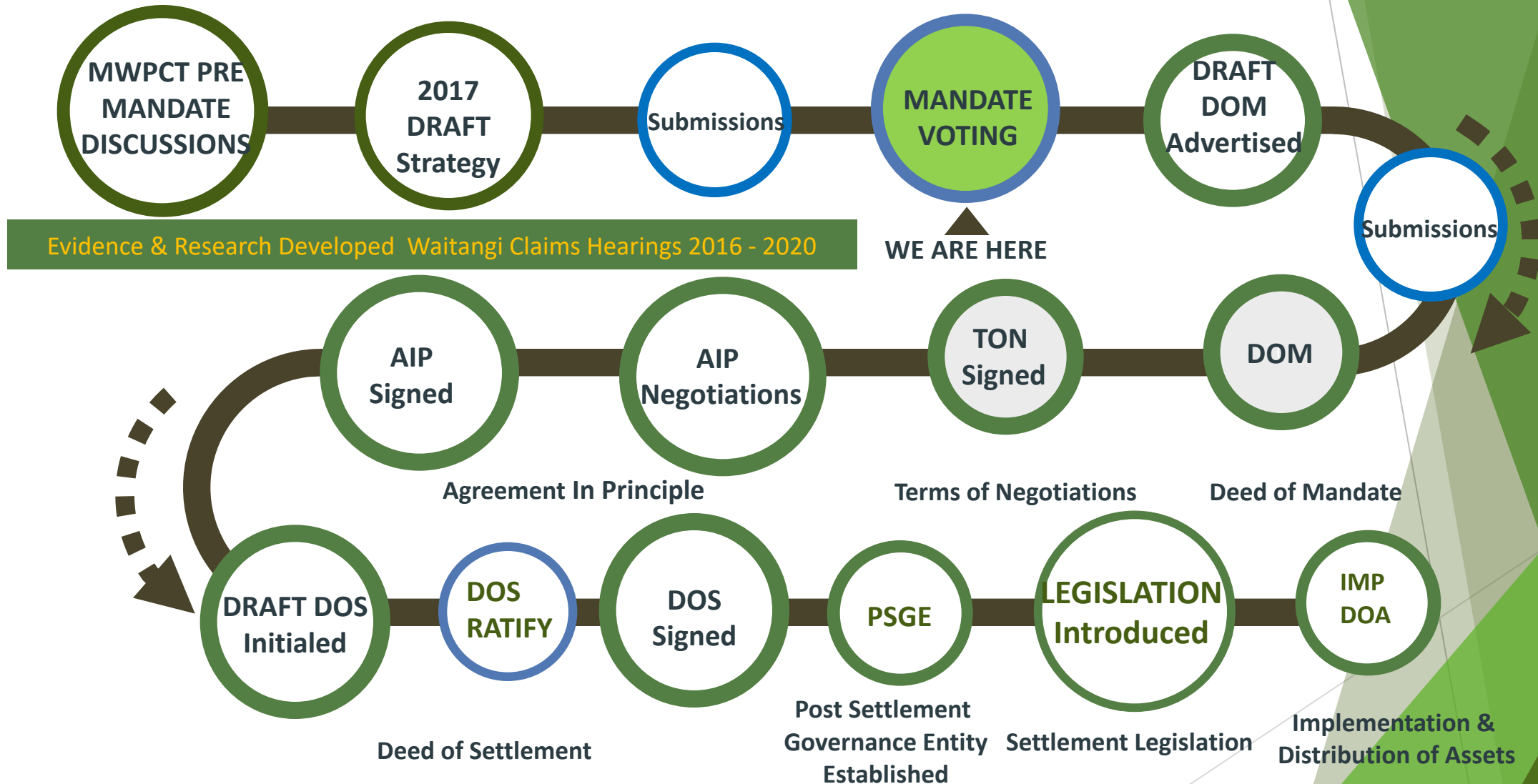
Present Situation

- ▶ Mōkai Pātea Nui Tonu have been involved in Waitangi Tribunal Hearings since 2016
- ▶ The Crown has recognised Mōkai Pātea as a Large Natural Grouping for the purpose of Treaty settlement negotiations
- ▶ The Crown is asking Mōkai Pātea Waitangi Claims Trust to confirm its mandate through a Mandate Vote
- ▶ This means there will be a Voting period which will include a series of six mandate hui.

Purpose of Mandate

- ▶ We will be asking you to consider that Mōkai Pātea Waitangi Claims Trust represents you in negotiations with the Crown
- ▶ That representation, will be maintained as outlined in the Mōkai Pātea Waitangi Claims Trust Mandate Strategy

DIRECT NEGOTIATIONS ROADMAP



What is a Treaty Settlement?

- ▶ An agreement between the Crown and a claimant group that settles all historical Treaty claims against the Crown (whether lodged with the Waitangi Tribunal or not) and acknowledges that the settlement is fair and final.
- ▶ Has three components:
 - ▶ historical account;
 - ▶ acknowledgements and apology; and
 - ▶ Redress (cultural, financial and commercial).
- ▶ Focuses on:
 - ▶ providing recognition of the claimant group's historical grievances;
 - ▶ restoring the relationship between the claimant group and the Crown; and
 - ▶ contributing to the claimant group's economic development.

What is a Mandate?

A mandate is an authorisation by a person or group to another group, to take a certain course of action.

In this case your supportive vote gives the authority for the Mōkai Pātea Waitangi Claims Trust to represent you in negotiations with the crown.

Limits on the Mandate:

- ▶ Only gives the mandated body the authority to negotiate a draft Deed of Settlement with the Crown
- ▶ Mandated representatives cannot settle any of the claims without the approval of the claimant group
- ▶ The claimant group has the final say on whether or not to accept a draft Deed of Settlement

Mōkai Pātea Waitangi Claims Trust Mandate

- ▶ Several years of work with Mōkai Pātea Iwi Nui Tonu culminated in the development of a draft mandate strategy which was submitted to the Crown for consideration
- ▶ In December 2017 the draft mandate strategy was advertised for submissions
- ▶ It proposed a process where-by Mōkai Pātea Waitangi Claims Trust would seek a mandate to represent from Mōkai Pātea Nui Tonu in Treaty settlement negotiations

Mandate Strategy Amendments

- ▶ Majority of submissions supported the Draft Mandate Strategy
- ▶ Opposition from some Ngāti Hinemanu and Ngāti Paki people through the Ngāti Hinemanu me Ngāti Paki Heritage Trust
- ▶ Work continued throughout 2018 with wānanga, hui-a-rohe, rūnanga hui-a-iwi, and series of independently facilitated hui with Ngāti Hinemanu me Ngāti Paki Heritage Trust
- ▶ As a result the strategy has evolved, as will be explained
- ▶ The differences with Ngāti Hinemanu me Ngāti Paki Heritage Trust remain unresolved
- ▶ Mōkai Pātea Nui Tonu and Mōkai Pātea Waitangi Claims Trust remain open to finding resolution acceptable to all parties, and we have agreed to provide an opportunity during each mandate hui for the Heritage Trust to give their perspective.

Vision

Mōkai Pātea is a viable and strong confederation, based on robust and autonomous Iwi groups

Mission

To settle historic Treaty of Waitangi claims as the Mōkai Pātea Confederation, in a manner that will greatly increase the profile and economic base for affiliated Hapū and Iwi and will achieve the return of cultural identity and property to Iwi

So the next generation, can take us to levels,
we can't imagine today

It is time for our people to decide if we should
proceed with negotiations with the Crown

Mōkai Pātea Nui Tonu

- ▶ Tamatea Pokai Whenua common founding ancestor
- ▶ Of the following iwi and their respective hapū:
 - ▶ Ngāi Te Ohuake;
 - ▶ Ngāti Hauiti;
 - ▶ Ngāti Whitikaupeka; and
 - ▶ Ngāti Tamakōpiri.
- ▶ Mōkai Pātea Nui Tonu acknowledge and affirm their history of kotahitanga, and similarly recognise each Iwi Rūnanga's independent exercise of tino rangatiratanga.

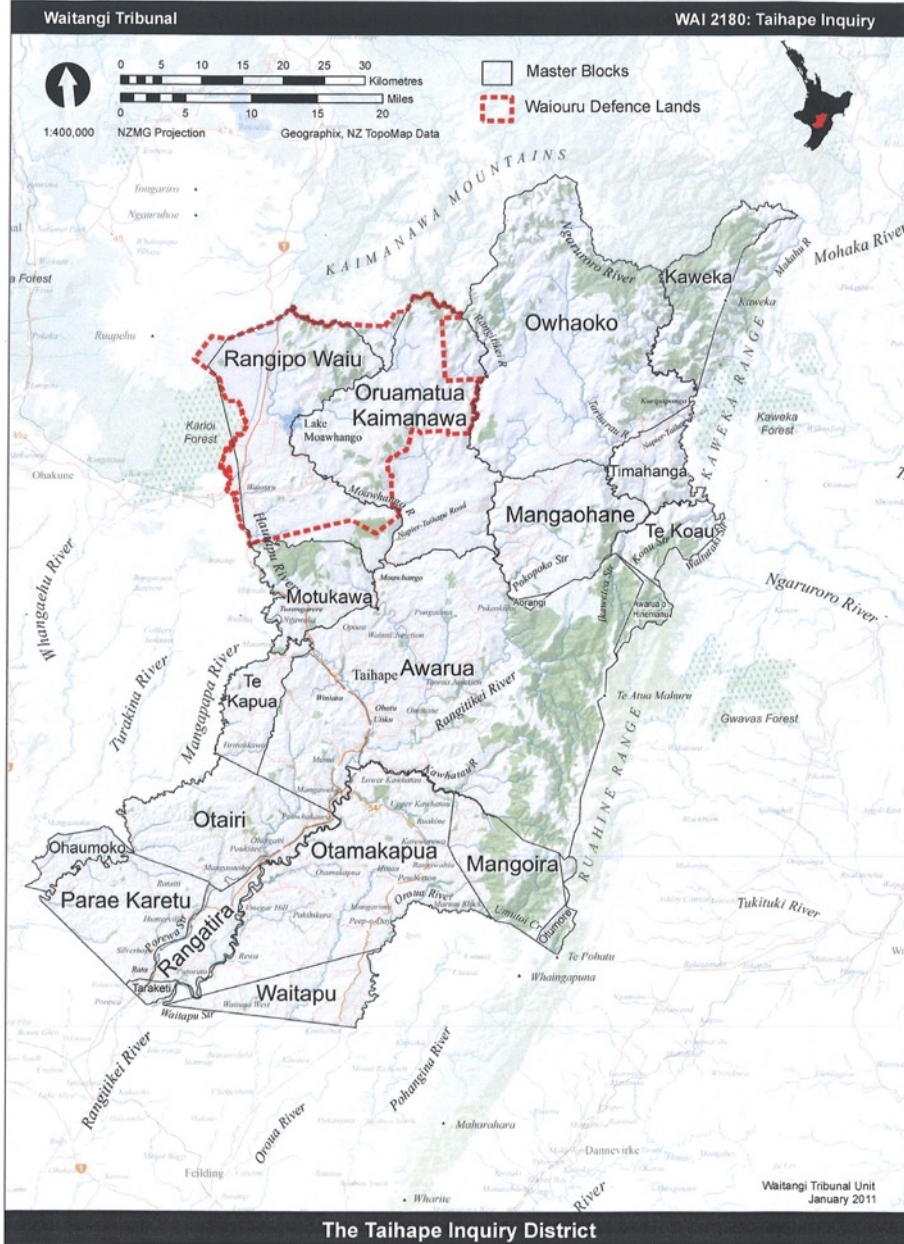
Rohe Whenua

- ▶ South of the Kaimanawa Ranges.
- ▶ North of Pourewa & Rātā
- ▶ West of the Ngaruroro Awa and Ruahine Ranges
- ▶ East of Taihape Township and
- ▶ It includes the towns of Taihape and parts of Hunterville.
- ▶ The Rangitīkei River flows through the heart of the district

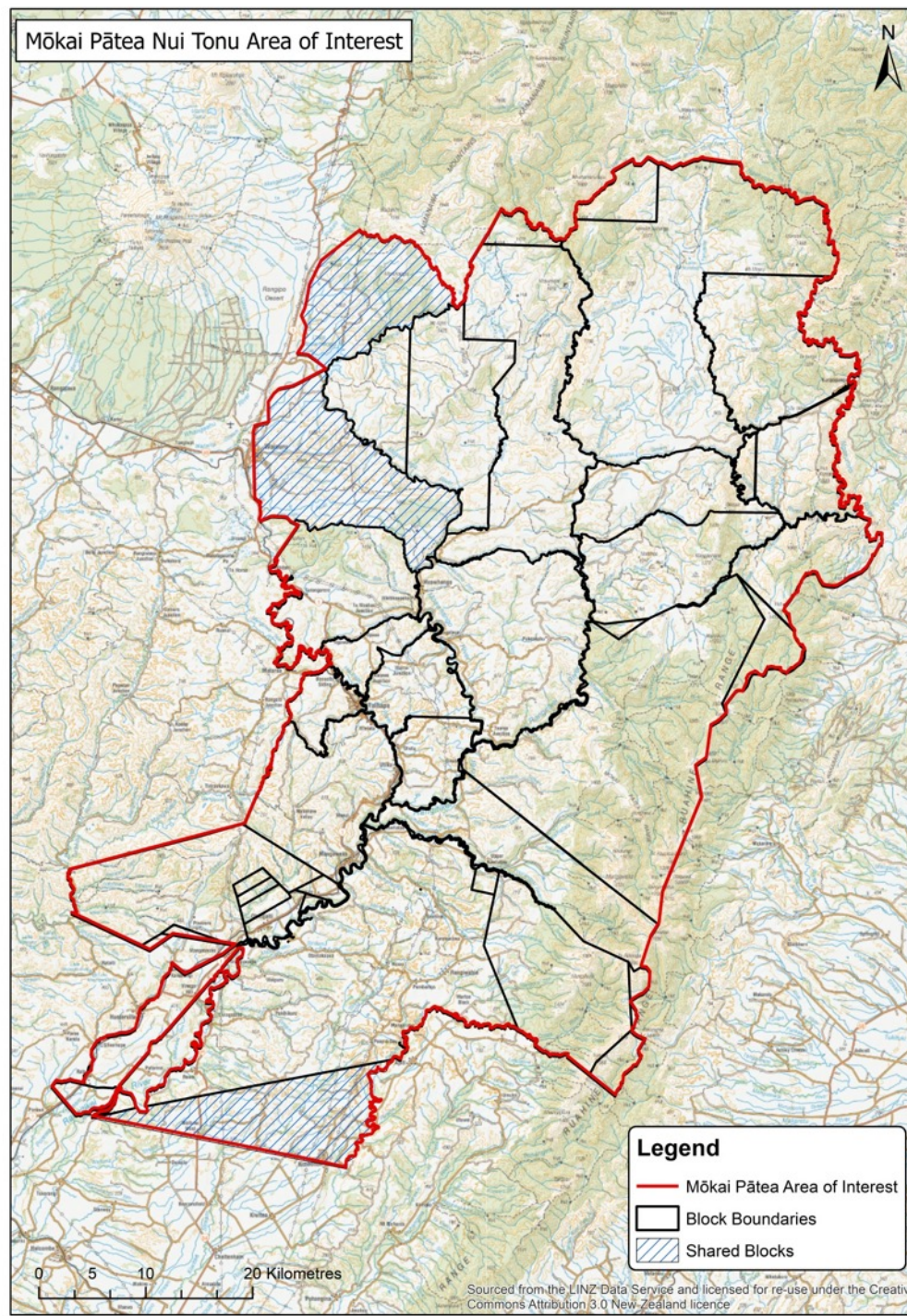
MAPS ON FOLLOWING SLIDES

- ▶ Wai:2180 Taihape Inquiry District
- ▶ Ngāi Te Ohuake
- ▶ Ngāti Hauiti
- ▶ Ngāti Whitikaupeka
- ▶ Ngāti Tamakōpiri
- ▶ Rohe Potae Overlapping

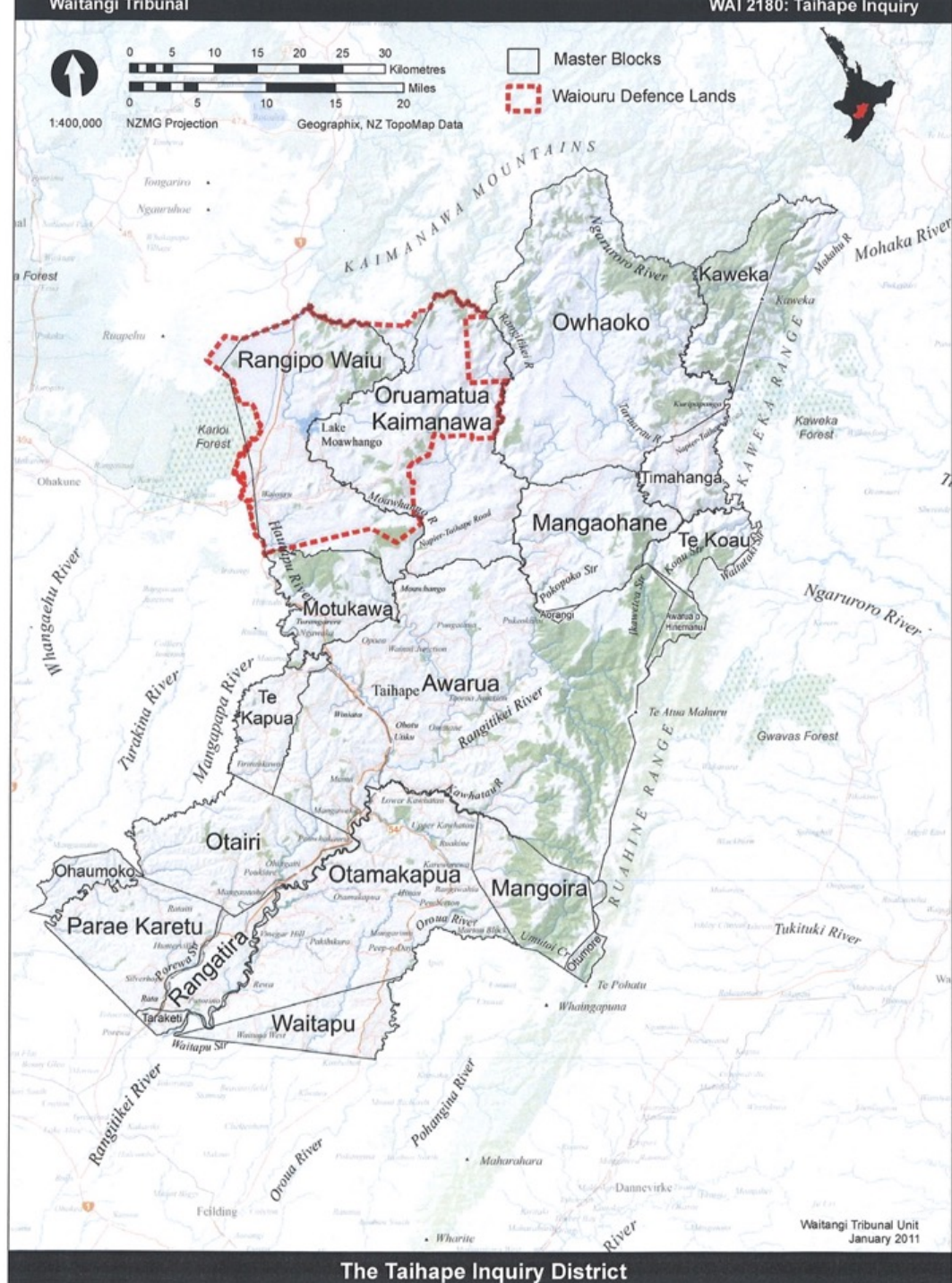
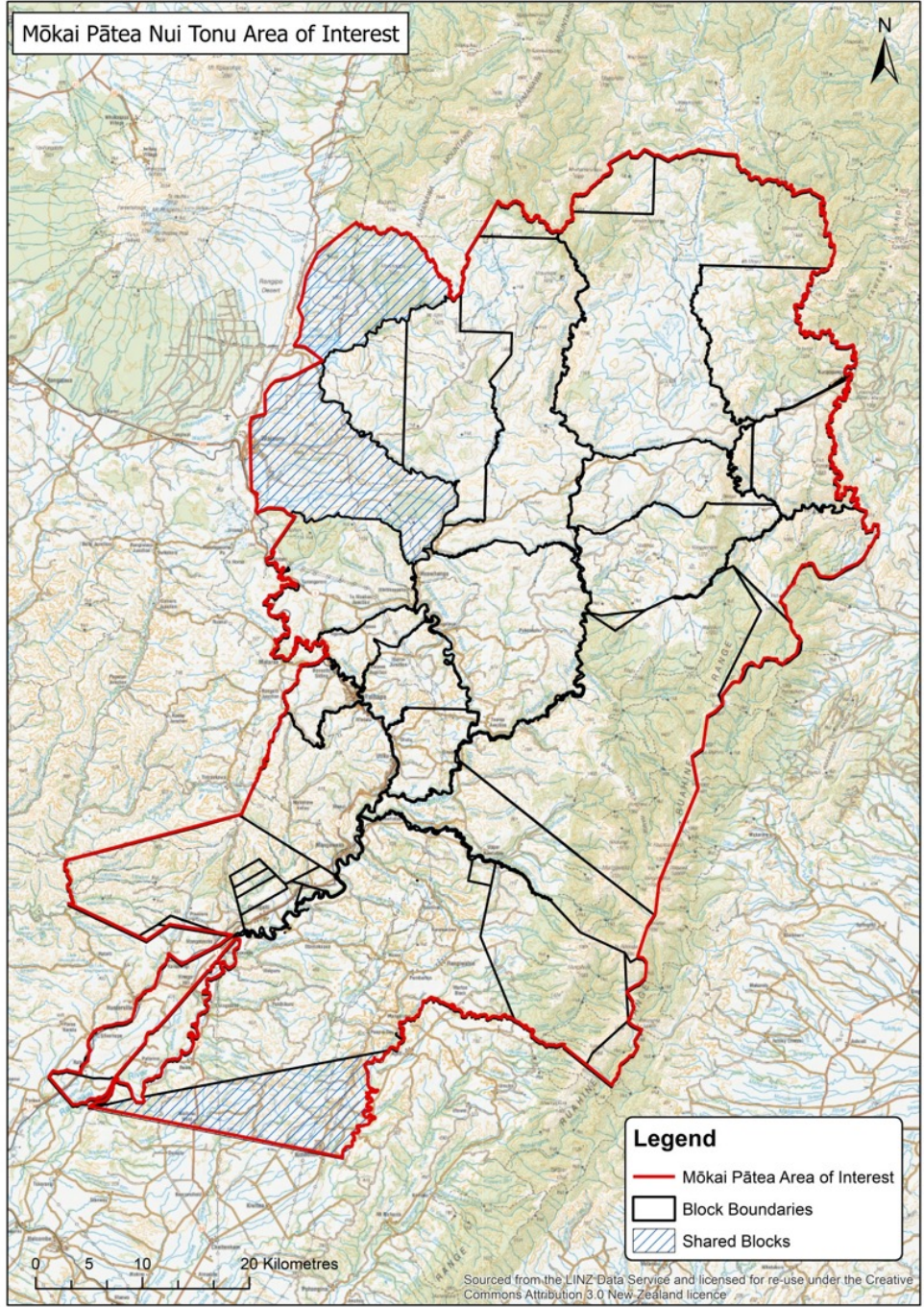
District



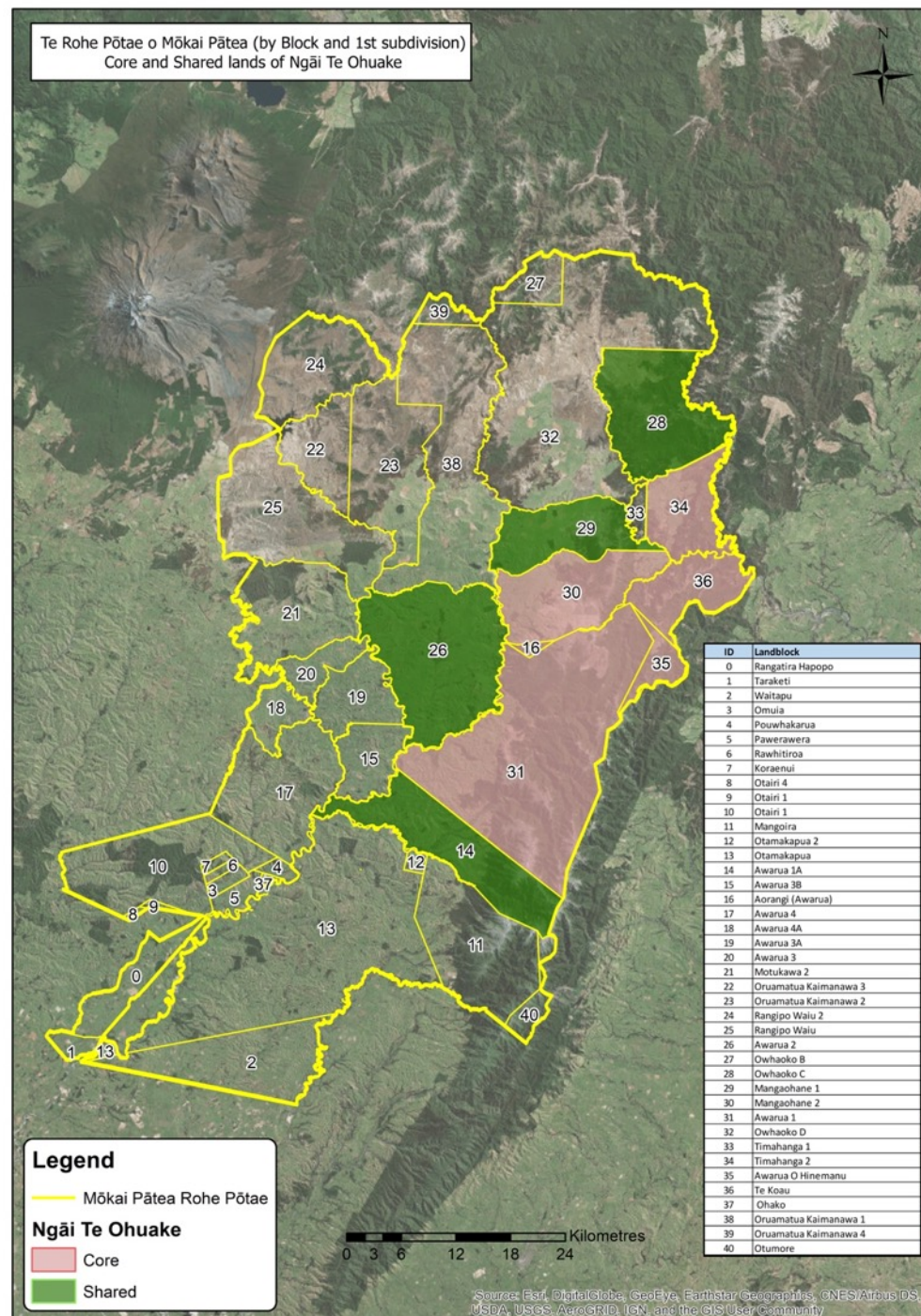
Mōkai Pātea Nui Tonu Area of Interest



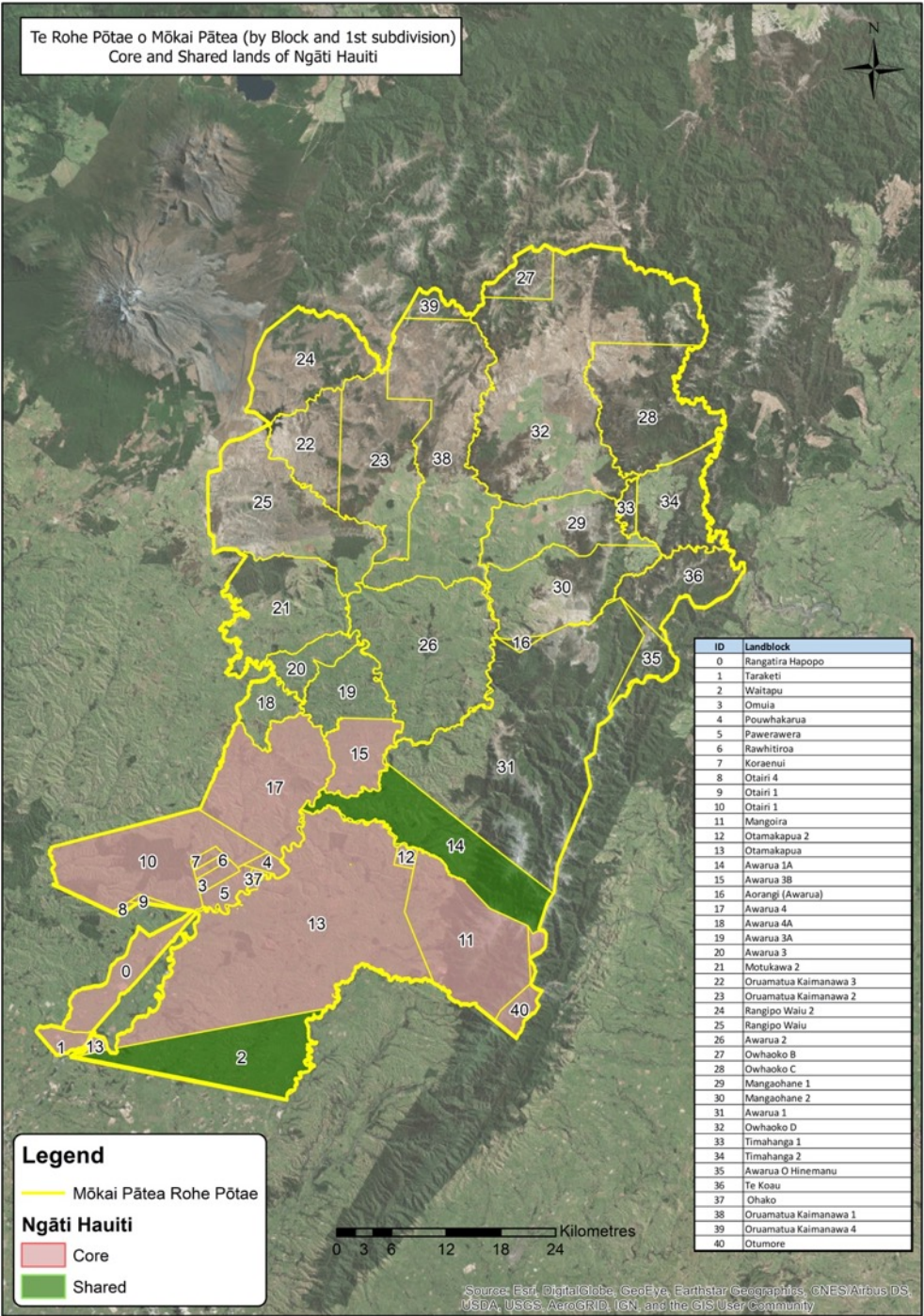
Mōkai Pātea Nui Tonu Area of Interest



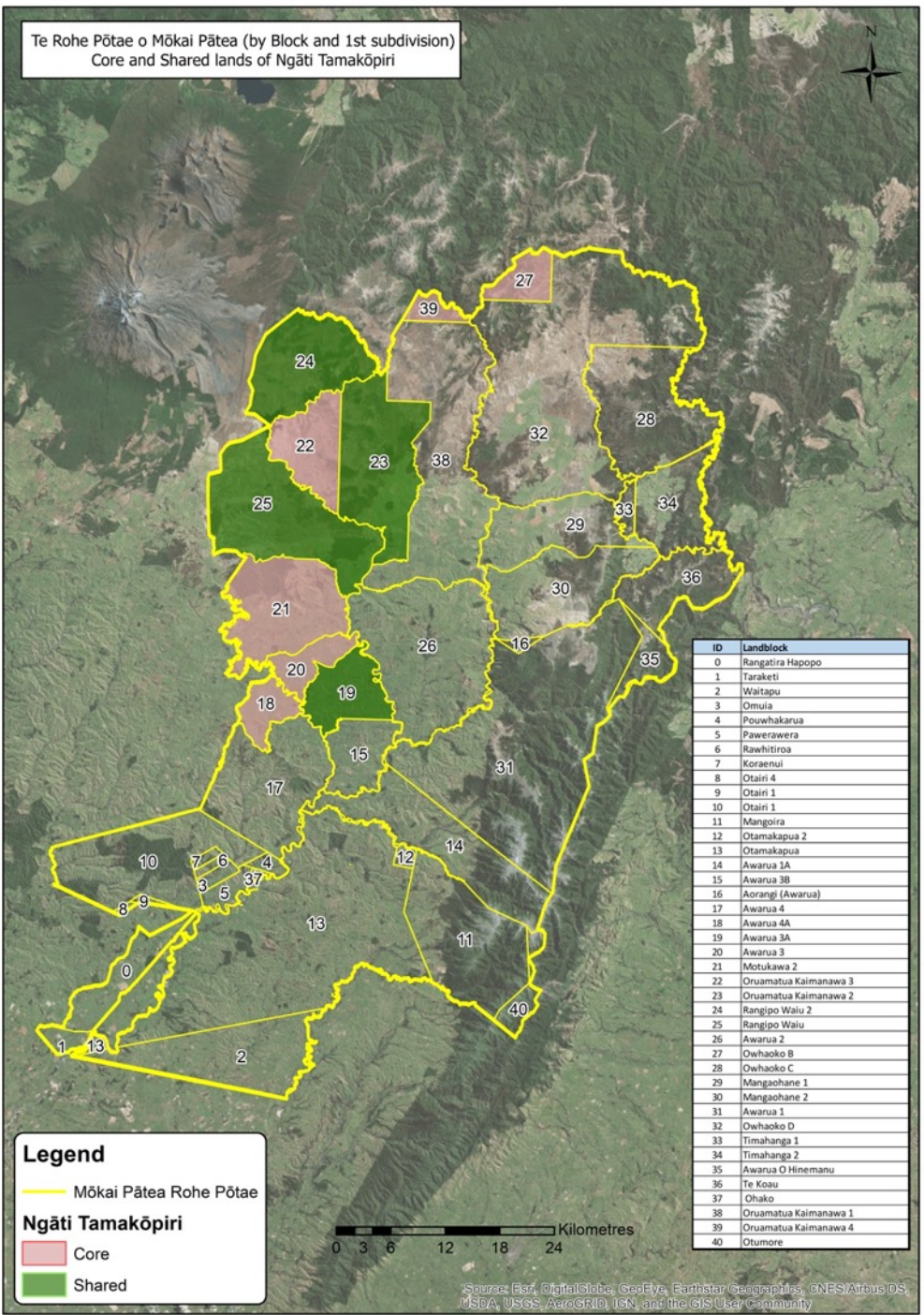
Ngāi Te Ohuake Core & Shared Lands



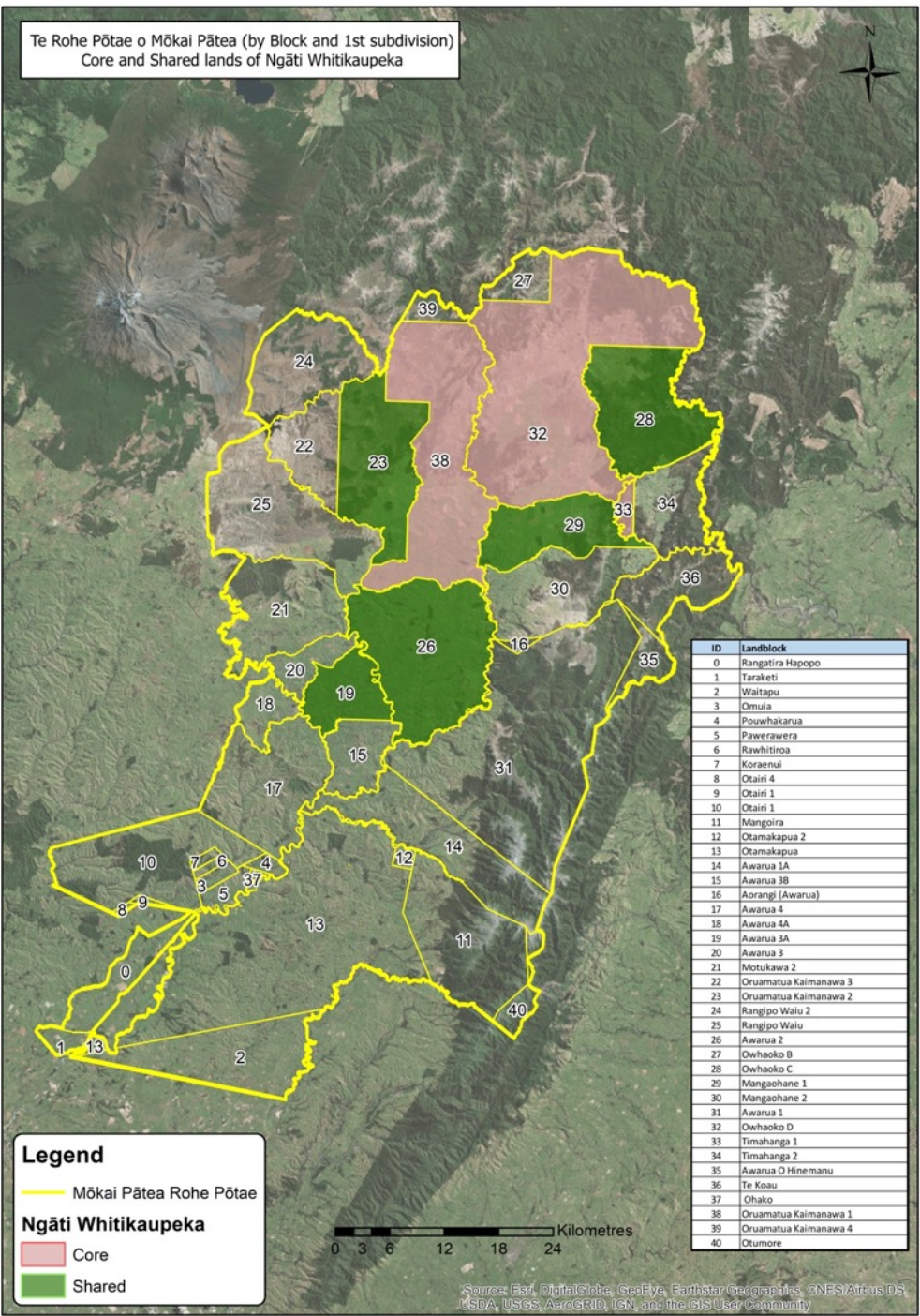
Ngāti Hauiti Core & Shared Lands



Ngāti Tamakōpiri Core & Shared Lands



Ngāti Whitikaupeka Core & Shared Lands



WAI Claims

The Mandate sought is to negotiate all Mōkai Pātea historical Treaty of Waitangi claims whether registered or unregistered that arise from Crown actions and omissions that occurred prior to 21 September 1992 including but not limited to the following claims in so far as they relate to Mōkai Pātea.

1	WAI 37	Tuope
2	WAI 263	Te Koau
3	WAI 378	Owhaoko C3B
4	WAI 382	Owhaoko C7
5	WAI 385	Potaka (Utiku) Tship
6	WAI 400	Ahuriri
7	WAI 401	Broughton
8	WAI 581	Ngāti Hauiti
9	WAI 588	Kaimanawa
10	WAI 647	Awarua
11	WAI 662	Mangaohane
12	WAI 933	Tuope
13	WAI 1196	Tongariro Power Sch
14	WAI 1632	Pohe
15	WAI 1639	Cribb
16	WAI 1705	MPWCT
17	WAI 1835	Ngāti Paki Ngāti Hinemanu
18	WAI 1868	Oruamatua Kaimanawa
19	WAI 1888	Whitikaupeka
20	WAI 2157	Te Wainuiarua

Who is the Claimant Community?

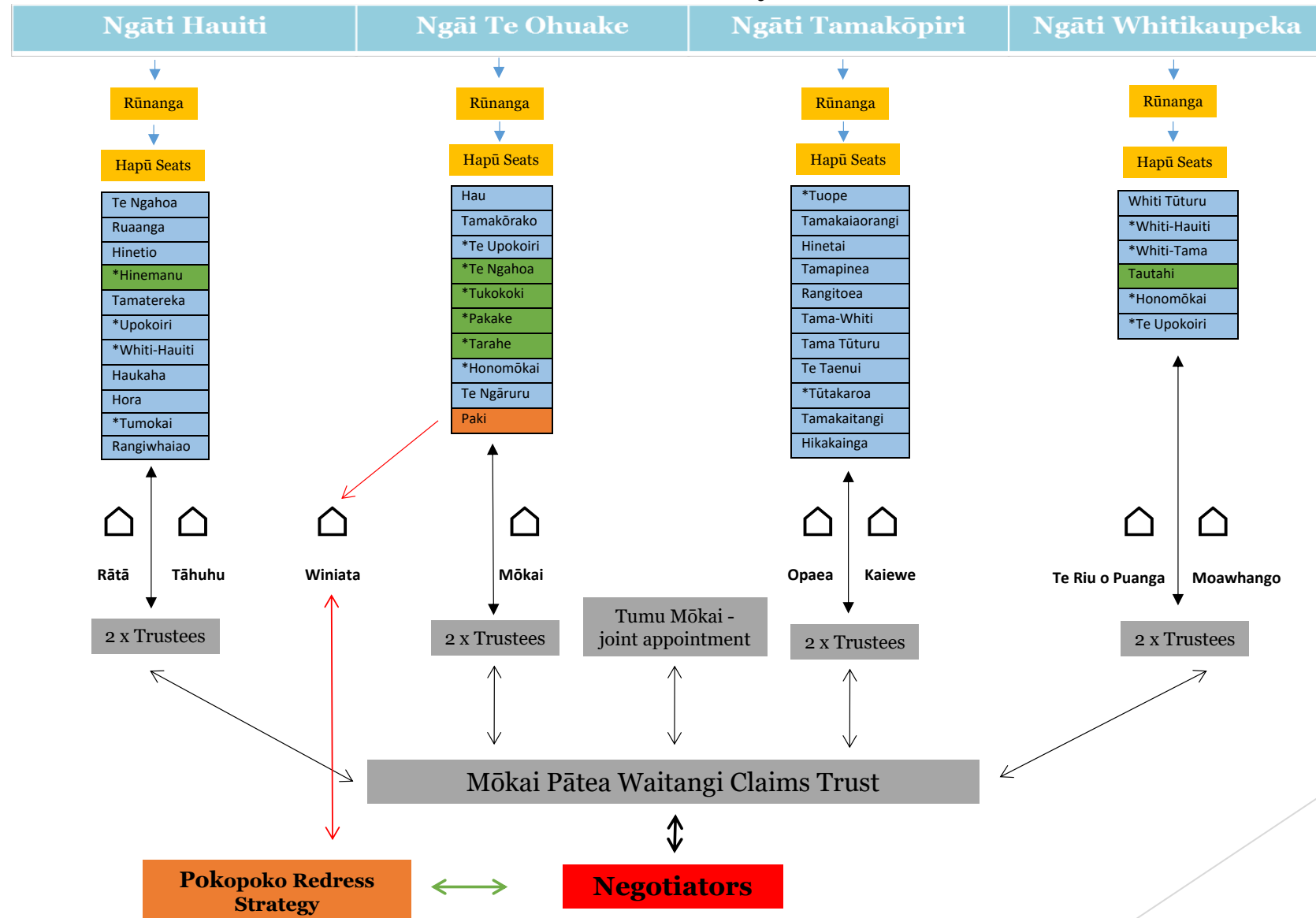
All those persons who affiliate by way of:

- ▶ verified whakapapa
- ▶ to one or more of the four confederated Iwi of Ngāi Te Ohuake, Ngāti Hauiti, Ngāti Whitikaupeka and Ngāti Tamakōpiri and their respective hapū
- ▶ including whāngai who satisfy the whakapapa verification processes under the Trust Deed
- ▶ and includes those who choose not to register as a member of the Trust

Mōkai Pātea Iwi, Hapu, Marae, Papakāinga

Iwi	<u>Ngāi Te Ohuake</u>	<u>Ngāti Hauiti</u>	<u>Ngāti Whitikaupeka</u>	<u>Ngāti Tamakōpiri</u>
Hapū	Ngāti Hau Ngāti Tamakorako Ngāti Hinemanu Ngāti Honomōkai Ngāi Te Upokoiri Ngāi te Ngāruru Ngāti Paki	Ngāi Te Ngahoa Ngāti Ruaanga Ngāti Haukaha Ngāti Tamatereka Ngāti Hora Ngāti Tūmōkai Ngāti Hinetio Ngāti Hinemanu Ngāi Te Upokoiri (II) Ngāti Whiti-Hauiti Ngāti Rangiwhaiao	Ngāti Whiti Tūturu Ngāti Whiti-Hauiti Ngāti Whiti-Tama Ngāi Te Upokoiri Ngāti Honomōkai Ngāi Tautahi	Ngāti Tuope Ngāti Tamakaiaorangi Ngāti Hinetai Ngāti Tamapinea Rangitoea Ngāti Tamawhiti Ngāti Tama Tūturu Ngāti Te Taenui Ngāti Tūtakaroa Ngāti Tamakaitangi Hikakainga
Marae	Winiata Marae (Ngāti Hinemanu/Ngāti Paki)	Tahuu Rātā Winiata (Ngāti Hinemanu)	Te Riu o Puanga Moawhango	Opaea Kaiewe
Papakāinga	Awarua (Mōkai) Pokopoko	Utiku Otara Pourewa	Makokomiko Matuku	Tūrangaarere Komakoriki

Mōkai Pātea Claimant Community



Mandate Strategy

1. States the purpose of the Mandate Strategy
2. Explains Mōkai Pātea Nui Tonu and names the iwi included
3. Names the hapū, marae and papakāinga of Mōkai Pātea Nui Tonu
4. Explains the area of interest for each of the iwi of Mōkai Pātea
5. Acknowledges the overlapping interests with other groups
6. The nature of the Historical WAI claims
7. Provides a diagram to explain the structure of Mōkai Pātea Waitangi Claims Trust

Mandate Strategy Continued

8. Explains the relationship between the Trust/Iwi Rūnanga and Iwi/Hapū
9. Discusses the process of appointment and proceedings of negotiators
10. Explains the Mōkai Pātea register
11. Outlines the mandating hui process and the advertisement
12. Provides options for the voting process
13. Considers the dispute resolution process

Eligibility to Vote

- ▶ 18 years of age or older
- ▶ Must have whakapapa connection to at least one of the four Iwi of Mōkai Pātea
- ▶ Registered to vote from the Mōkai Pātea tribal register, or
- ▶ You can register to vote at a mandate hui or by contacting Election Services - you will be required to fill in a registration form, and Mōkai Pātea Iwi will verify your whakapapa.

Mandate Hui

Date 2019	Start Time	Venue
Sat 15 June	10 am	Old Taihape Hospital Cafeteria, Hospital Road, Taihape
Sat 15 June	5 pm	Kingsgate Hotel, 397 Victoria Avenue, Whanganui
Sun 16 June	1 pm	The Porirua Club, Sports Room, 1 Lodge Place, Porirua, Wellington
Fri 21 June	5.30 pm	Tokaanu Hotel Conference Room, 525 State Highway 4, Tokaanu, Turangi
Sat 22 June	11 am	Taradale Town Hall, Lee Road, Taradale, Hawkes Bay
Sun 23 June	11 am	Holiday Inn Auckland Airport, 2 Ascot Road Airport Oaks, Auckland

3 Ways to Vote

There will be three ways in which you can vote:

- ▶ Vote by Post
- ▶ Vote Online
- ▶ Vote at a Mandate Hui

VOTING OPENS 10 JUNE 2019 CLOSSES 8 JULY 2019.

The Mandate Vote

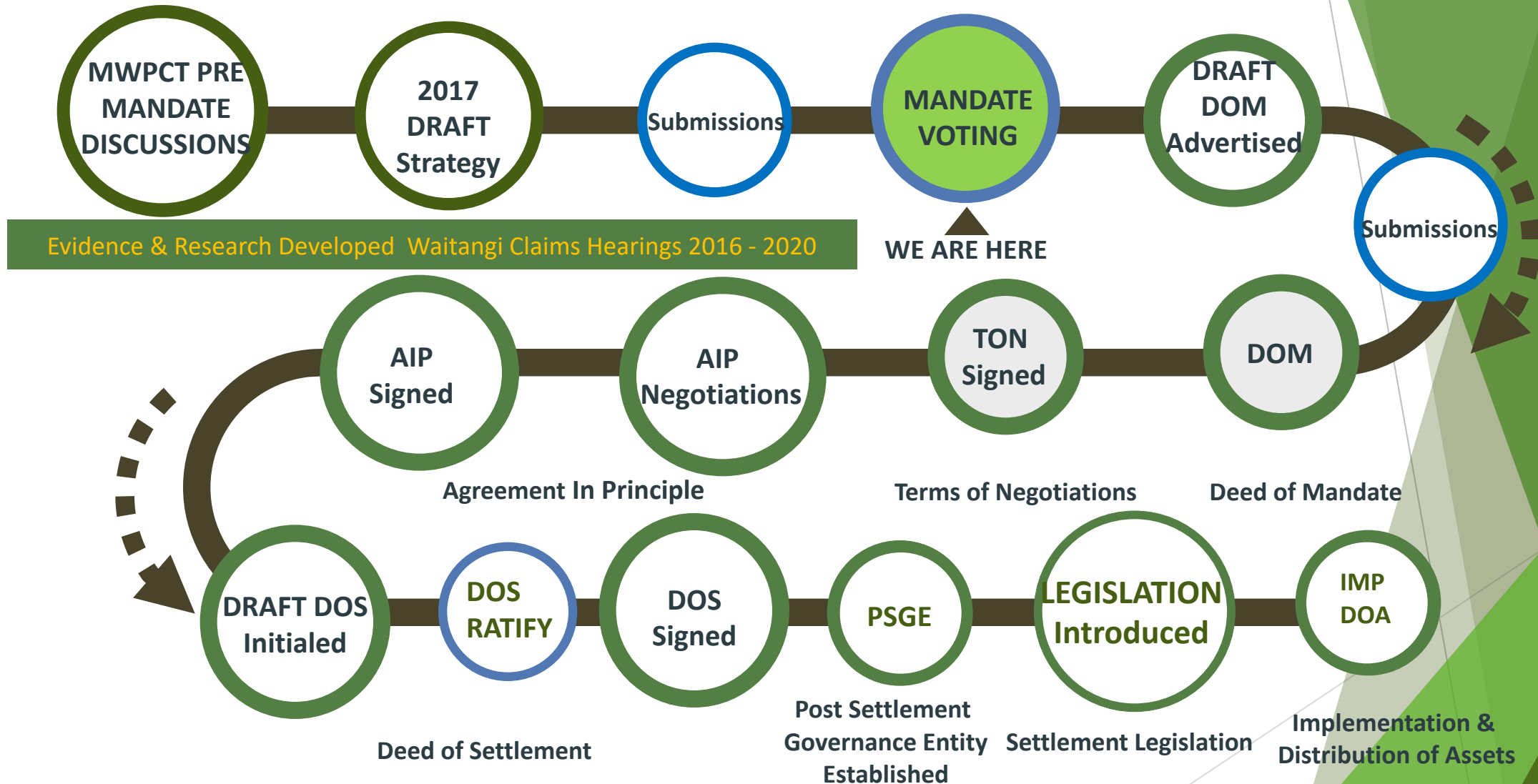
All members of Mōkai Pātea Claimant community 18 years of age and over are invited to vote on the following resolution:

“That the Mōkai Pātea Waitangi Claims Trust is mandated to represent the Mōkai Pātea claimant community in negotiations with the Crown for the comprehensive settlement of all of the historical claims of Mōkai Pātea Nui Tonu”

Waitangi Tribunal Path Update

Week	Date	Venue	Our Focus
1 & 2	(2016)	Various	Kōrero Tuku Iho History & Tradition Mōkai Pātea
3	(Oct 2017)	Taihape	Ngāti Whitikaupeka
4	(Dec 2017)	Winiata	Ngāi Te Ohuake/Ngati Paki
5	(Mar 2018)	Rata	Ngāti Hauiti
6	(Apr 2018)	Opaea, Kaiewe & Moawhango	Ngāti Tamakōpiri
7	(May 2018)	Winiata	Southern Claims
8	(Sep 2018)	Rata	Remaining Tangata Whenua Evidence
9	(March 2019)	Waiouru	Crown Evidence Part 1
10	16-18 Oct 2019	Omahu (tbc)	Kaweka & Gwavas (16-18 Oct 2018)
11	4-8 Nov 2019	Waiouru (tbc)	Crown Evidence Part 2
12	18-20 Nov 2019	Moawhango (tbc)	Landlocked Land in Mōkai Pātea
13	17-21 Feb 2020	Winiata (tbc)	Claimant Closing
14	20 April 2020	Waiouru (tbc)	Crown Closing

DIRECT NEGOTIATIONS ROADMAP



Take Action & Vote

- ▶ Vote packs will be posted to registered members
- ▶ Are you registered?
- ▶ Check we have your current contact & postal details
- ▶ Check your whānau are registered
- ▶ Children you included when you registered and may now be 18 or older, **must** be registered in their own right
- ▶ Vote and encourage others to Vote

Ngāti Hinemanu me Ngāti Paki Heritage Trust perspective

- ▶ On Thursday 13 June, the Heritage Trust asked the Crown if it could make a presentation to each mandate hui. Mokai Patea Waitangi Claims Trust has agreed to this in good faith.
- ▶ The next 5 slides are not the views of Mokai Patea Waitangi Claims Trust.
- ▶ There will then be a summary from Mokai Patea and opportunity for questions and answers



NGĀTI HINEMANU me NGĀTI PAKI

~~WHY ARE WE VOTING 'NO'?~~



RANGATIRATANGA

Ngāti Hinemanu me Ngāti Pahi have always maintained an independent stance.

Ngāti Hinemanu me Ngāti Pahi oppose having their claims included within any Deed of Mandate of any group other than the Ngāti Hinemanu me Ngāti Pahi Heritage Trust.

The mandate of the Ngāti Hinemanu me Ngāti Pahi Heritage Trust to represent these claims within the Treaty settlement process rubric has been consistently reaffirmed at every AGM.

TIKANGA

The MPWCT's attempt to subsume the tino rangatiratanga of Ngāti Hinemanu me Ngāti Paki under the mantle of Ngāi Te Ohuake is a breach of tikanga.

Ngāi Te Ohuake is an ancient descent group that over time became assumed within the mana and authority of Ngāti Hinemanu me Ngāti Paki.

Ngāti Hinemanu ki Taihape and Ngāti Paki were willing to have these matters resolved in a mutually beneficial way consistent with tikanga and be represented by those who have always recognised the mana motuhake and tino rangatiratanga of Ngāti Hinemanu me Ngāti Paki to pursue their own interests as part of the complex claims process.

MPWCT responded that they have no appetite to accommodate Ngāti Hinemanu as a fifth Iwi, nor were they interested in making any changes which supported Ngāti Hinemanu and Ngāti Paki being fairly represented in the way we should be.







Ngāti Hinemanu
me Ngāti PAKI
VOTE **X** KĀO

Summary: Mokai Patea presentation

- ▶ The next step in the claims process is to endorse a mandated representative body to negotiate Treaty claims
- ▶ Mokai Patea Waitangi Claims Trust is a robust structure. We are Accountable, Transparent. Elections are representative of all of our hapū.
- ▶ We strongly object to the suggestion that MPWCT is “subsuming” hapū rangatiratanga. All hapū are accommodated and respected, including Ngāti Hinemanu and Ngāti Paki.

QUESTIONS

Mandate Strategy



www.mokaipateaclaims.maori.nz/documents



mpwct@mokaipateaservices.org.nz



0800 388 488

Vote Pack



info@electionservices.co.nz



0800 922 822