



Te Puni Kōkiri

E.47

Te Pūrongo ā-Tau

Mō te tau i mutu i te 30 o ngā rā o Pipiri 2004



Te Pūrongo Ā-tau a



TE PUNI KŌKIRI

Mō te tau i mutu i te 30 o Pipiri 2004

I tuku ki te aroaro a te Whare Paremata i raro i Tekiona 39 o te
Ture Pūtea Tūmatanui 1989.



Ki te Minita mō ngā Take Māori

Te honore kei ahau ki te tuku, i te pūrongo ā-tau a Te Puni Kōkiri mō te tau i mutu i te tau 30 o Pipiri 2004, ki a koe.

A handwritten signature in brown ink, reading 'Leith Comer'.

Leith Comer
Manahautū

Te Rārangi Kōrero

Te Whakāturanga.....	6
Pānui Matakite/ Take	7
Ngā Kupu Whakataki a te Manahautū.....	8
Tīmatatanga	10
Pārongo Whakahaere	12
Ngā Take Miramira mō te tau 2003/04	14
Raukaha.....	16
Pānui Mana Whakahaere.....	19
Putanga Momo 1 – Kaupapa Whanaketanga Māori.....	20
Putanga Momo 2 – Mahinga Rāngai Kāwanatanga	22
Putanga Momo 3 - Whakarite me te Hoko Ratonga	24
Putanga Momo 4 - Whakahaere Kaupapa Mahinga.....	25
Te Pai o te Whakaiti Ngā Ritekore	26
Ngā Kawenga i raro i te Ture.....	44

Te Whakāturanga

Te Tari Matua:

Te Whare o Te Puni Kōkiri
143 Lambton Quay
Te Whanga-nui-ā-Tara
AOTEAROA

Tuhi Kāinga:

Pouaka Poutāpeta 3943 Tau Waea: 064-4-922 6000
Te Whanga-nui-ā-Tara Waea Whakaahua: 064-4-922 6299
AOTEAROA

Te Pae Tukutuku:

<http://www.tpk.govt.nz>

Kaitātari Kaute:

Te Tari Arotake o te Motu
Te Whanga-nui-ā-Tara
mo te taha ki te Kai arotake Matua

Te Pēke

Westpac

Matakite

“Kia tū rangatira ai te ao Māori”

he tirohanga whānui kia whāia atu ngā hiahia a ngai Māori
ki ngā mahinga ngātahi ki ētahi ake tāngata

Huanga

“Ngai Māori e angitu ana hei Māori”

ahakoa kei whea, he aha rānei tā rātou ka whiria, i roto i te ao Māori,
ki Aotearoa, me te ao whānui

Take

“Te whakamana angitu Māori”

te ārahi, me te arataki i te whakamanatanga i te whaiwāhitanga o te
Māori, me te angitu o te Māori

Arotahi

“Āārahi hononga Kāwanatanga ki a ngai Māori”

te ārahi, me te arataki i te āhua tomo a te kāwanatanga ki a ngai Māori

Huarahi

“Te Puni Kōkiri”

e ahu whakamua ngātahi ana

Ngā Kupu Whakataki a te Manahautū



2003/04 He tau Whaka Rerekē

Tēnei aku mihi ki a koutou ngā iwi katoa o Aotearoa, ki a rātou mā kua wheturangitia, ki a tātou hoki te hunga ora, puta noa ki te motu. Tēnā koutou me ngā āhuetanga maha, whakahirahira, e pā ana ki a ngai Māori.

I a tātou e kuhu ana ki te tau 2003/04 e tika ana kia whakarerekē te tari a Te Puni Kōkiri. Kua oti te whakarerekētanga. I waenga i ngā marama tīmatanga, e whā, i te mahi tata mātou ki te Minita mō ngā Take Māori, ki tētahi Rōpū Tohutoro o Waho, me tētahi Rōpū Tohutohu Pokapu Kāwanatanga, ki te hanga i tētahi huarahi rautaki hou. I puta mai i ēnei mahinga he tautoko ki a mātou:

- Huanga, *Ngai Māori e angitu ana hei Māori* on policy
- Arotahi mātāmua mō ngā kaupapa here, **te ārahi, me te arataki me pēwhea te kāwanatanga mahi ki te taha o ngai Māori**
- He huarahi mahi, **e ahu whakamua ngātahi ana**. He tari kōmitimiti e mahi tahi ana ki a ngai Māori, ki te kāwanatanga, ki waho o te kāwanatanga, me te ao pakihi.

Kātahi kā mahi matou ki te whakarite, ki te kōrero ki ngā kaimahi, mō te āhua o te tari kia taea ai te whakatutuki i tā mātou Huarahi Rautaki. I te marama o Hui-tanguru 2004, ka pānuitia e mātou ngā tuhinga e rua, *Te Huarahi Rautaki*, me *Te Tuhinga Whakatau: Kaupapa Whakarerekē*. He wāhanga nui tonu o tenei tuhinga i whai ki te whakakotahi i a mātou mahinga kia pūmau te hāngaitanga atu ki tā mātou arotahi mātāmua, arā, te ārahi, me te arataki kaupapa here. I kitea anō i roto i te kaupapa whakarerekē, te mahi mā mātou ki te hanga raukaha me te whakapai ake i a mātou pūnaha, me ngā whakaritenga.

I tāmatahia te wāhanga tuatahi a te kaupapa whakarerekē mā tētahi mahere whakamahi whānui tonu. I roto i te mahere i whakaāe mātou ki te anga, ka mahia ngā mahi tuatahi ki te whakapai i te raukaha, ki te whakatū i ngā Hekeretari Kaitiriwā, kia hono mai rātou ki ahau ki roto i te Kapa

Kaiārahi Whakahaere. Kua tukuna mā tēnei kapa e ārahi i a Te Puni Kōkiri kia māhi ngātahi, e whakahaere hoki i tā mātou huarahi whakarerekē.

I roto i tēnei wā, i tāmatahia anō e ahau tētahi mahinga whakawhanaungatanga kaiwhaiwāhi nui tonu, ki te whakapūmau e whirinaki ana a mātou mahinga ki ngā whāinga a te Minita me te Kāwanatanga, e mārama ana, e tautokohia ana e ngā pokapū kāwanatanga, e ngā kaiwhaiwāhi me ngā hapori Māori, me te mea tino whakahirahira, e tautoko ana e a mātou kaimahi.

Mō te roanga o tēnei wā arotake whānui i te tari, i te whai tonu mātou ki te kawē i ngā huanga o tā mātou mahere 2003/04, me te tautoko i a mātou Minita. I te mutunga o a mātou mahi i te tau 2003/04, e pono ana ahau kua hangaia e mātou he papanga pakari hei ahunga whakamua. Ka titiro whakamua ahau ki te kuhunga atu ki te tau 2004/05 e kitea ana e ahau he tau mō te whakatōpū kia pakari ngā whakarerekētanga, me te hanga kia kaha ake te papanga.



Leith Comer
Manahautū

Tīmatatanga

E 330 ngā kaimahi a Te Puni Kōkiri, kei ngā tari ā-rohe e 9, me te tari matua kei Te Whanganui-ā-Tara. I whakatūria i te 1 o Kohitātea 1992, mō ngā tari Manatū Māori, me Te Tira Ahu Iwi, ngā tari kairiwhi e rua, mō te Tari mō ngā Take Māori. I hangaia he ture i roto i te Ture Manatū Whanakehanga Māori (1991), ki te tuku mana whakahere, ki a Te Puni Kōkiri, ki te whakapiki i ngā taumata whakaeke mō ngai Māori, me te arotake i ngā pokapū e whakawhiwhi ratonga ana ki a ngai Māori, mō ngai Māori rānei.

I te tau 1999, i whakawhānuitia e te Kāwanatanga Reipa/ Hononga ngā mahinga a Te Puni Kōkiri ki te tātari i te hāngaitanga a ngā kaupapa kāwanatanga mō ngai Māori, me te whakanui ake i te mahi tuku ratonga. Ko te take mō ēnei whakarerekētanga katoa, kia taea tētahi huarahi kōmitimiti mō ngā whāinga whānui a te Kāwanatanga mō ngai Māori; ki te whakaheke i ngā ritekore, ki te whakanui ake i ngā huarahi me ngā tautokohanga mō te whanaketanga Māori. I titiro nui atu ki te whakarite me te tautoko i te whanaketanga Māori ki ngā taumata ā-rohe, anō, ki te arataki, ki te tohutohu, ki te ārahi i roto i ngā tari kāwanatanga, ki reira ārahi i ngā mahinga kaupapa here nui tonu, me te whakawhiwhi tohutohu kaupapa here tino mārama ki te kāwanatanga.

Kua mārama ake te whaiwāhitanga nui tonu a ngai Māori ki ngā āhuatanga ōhanga, haporī, tikanga e tipu ake ana ki Aotearoa. Ki konei, āmuri i te hangatanga o te huarahi rautaki hou i pānuitia i te marama o Hui-tanguru 2004, kua arotakehia e mātou tā mātou anga tari, kia tata atu a Te Puni Kōkiri ki te whakatutuki i tā mātou huanga tuatahi, a *ngai Māori e angitu ana hei Māori*.

Ināianei, kua weheruatia, e to mātou anga huanga whānui a Te Puni Kōkiri, ngā huanga pēnei nā: Māori motuhake – kei i a ngai Māori tonu te mana hei whakahaere i ngā mahinga whakatutuki i ngā huanga e pā tata ana ki a ngai Māori; me te ao tukupū, ki konei, kei ngā pokapū kāwanatanga te mana whakahaere i ngā mahinga kia tutuki ngā huanga e pā tata ki ngā tāngata katoa o Aotearoa.

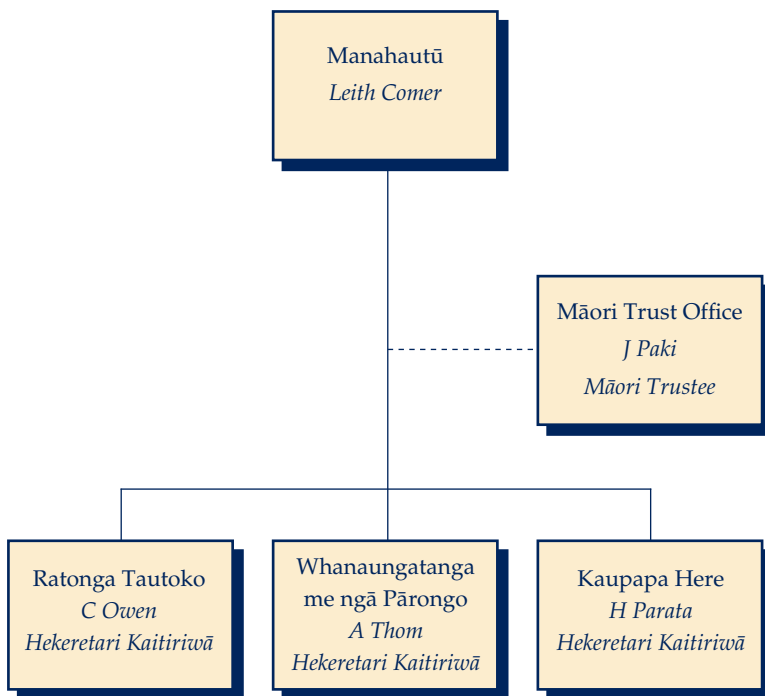
I a mātou e ahu whakamua ana, ka mahi tahi a Te Puni Kōkiri ki te Kāwanatanga, ki a ngai Māori, ki waho o te kāwanatanga, ki ngā wāhanga

umanga, i ngā mahi ōrite, me ngā rautaki, ki te whakapūmau ka kawea e ngā kaupapa here, ngā kaupapa, me ngā ratonga he huanga ōrite mō ngai Māori. Mai i te 1 o Hōngongoi 2004, ka kitea te arotahi i a mātou e:

- ārahi ana i ngā tohutohu ki te kāwanatanga mō ngā whanaketanga kaupapa here e hāngai ana ki ngā huanga Māori motuhake
- mahi tahi ana ki ngā pokapū kāwanatanga ki te arataki whanaketanga kaupapa here, me te aromatawai, te arotake mahinga
- mahi ana ki te taha o ngai Māori ki ngā “pūtake harakeke” ki te tautoko i ngā mahinga whaiwāhitanga Māori
- te whakapai ake i te honohonotanga o a mātou mahinga umanga ki te tautoko i a mātou mahi katoa.

Pārongo Whakahaere

Mai i te 1 o Hōngongoi 2004, kua hangaia kia toru ngā wāhanga o tō mātou tari, me te Tari Kātiaki Māori. E whakaatu ana ēnei wāhanga kei te whakaahua e whai nei:



Kaupapa Here

E whā ngā tari whakahaere kei roto i te wāhanga kaupapa kōmitimiti, e toru o ēnei (Whakawhanaungatanga, Tikanga, me te Whaiwāhitanga) ka whakakotahi i ngā mahinga rangahau, whanaketanga kaupapa here, arotake me te aromatawai, me te tari whakahaere whakapūmau Huanga Pai, e arotahi ana ki ngā mahi hopu, whanaketanga, me te whakatika i ngā mātauranga, ngā rangahau, me ngā pārongo. Ko te whāinga tuatahi o te whakatūtanga i te wāhanga kaupapa here, he whakapūmau arotahi e tata ana ki tōna mahinga uho, te ārahi me te arataki kaupapa here, te whakahāngai i ngā tohutohu kaupapa here ki aua wāhi ka ahei ai ngā tautokohanga nui tonu kia eke ki te taumata, a ngai Māori e angitu ana hei Māori, kua whakahuatia nei ki roto i tā matou Pānui Whāinga, o te 1 o Hōngongoi, 2004.

Whakawhanaungatanga me te Pārongo

Kei tēnei wāhanga te mana whakahaere i te honohonotanga ki ngā “pūtake harakeke”, kei ngā rohe e iwa, me te hono hāngai atu ki ngā whānau, hapū, iwi, ngā rōpū me ngā nohanga Māori. He mahi ki te hanga whanaungatanga, ki te kohikohi pārongo hei whakaatu i ngā whakaaro a Te Puni Kōkiri, me te Kāwanatanga. Mā to mātou whanaungatanga ki a ngai Māori e whakawhiwhi i tētahi papa ahurei ki te whakamātautau mehemea ka taea te mahi, kei te pakari hoki a mātou tohutohu kaupapa here, e tukuna ana. Mā te wāhanga anō e whakahaere, e whakarite te tuku i ngā ratonga me ngā kaupapa tuku pūtea, ka whakaterere i a ngai Māori e angitu ana hei Māori.

Ratonga Tautoko

Kei tēnei wāhanga te mana whakahaere ki te whakawhiwhi ratonga tautoko whakahaere kairangi, kia taea e ngā wāhanga katoa a Te Puni Kōkiri te whakahaere i a rātou i raro i ngā whakahaere hāngai, tōtika. E whai ake nei ngā mahinga kei raro i ngā whakahaere a te wāhanga Ratonga Tautoko:

- > Pūtea
- > Rawa Tangata
- > Ratonga Pārongo
- > Ratonga Ture
- > Ratonga Tautoko i ngā Minita
- > Te whakahaere me te whakapūmau whakararu.

Tari a te Manahautū

Ko te Tari a te Manahautū e tautoko ana i te Manahautū ki te whakaoti i āna mahi kia oti tōtika, kia oti hāngai. Kei roto i te Tari a te Manahautū, ko:

- > Whakapāpātanga
- > Rautaki Whakahaere

Ko tētahi o ngā mahi whakahirahira a te Tari a te Manahautū, he hanga, he whakapakari, he whakamaui i te whanaungatanga ki ngā kaupapuri pānga.

Tari Kaitiaki Māori

Ko te Kaitiaki Māori e whakawhiwhi ana i tētahi anga whai hua, tauwhiro, mō te whanaketanga me te whakamahinga i ngā rawa Māori hei whakaterere i te whanaketanga Māori. Ko Te Puni Kōkiri kei te whakawhiwhi ratonga kaimahi, whare tari, me ngā tautokohanga rangatōpū ki te Kaitiaki Māori.

Take Miramira o te tau 2003/04

Kua whakahuatia i roto i tēnei pūrongo, ngā tauwhāinga rongonui me ngā whakatutukitanga a Te Puni Kōkiri mō te 12 marama ki muri. E whai ake nei ētahi anō:

I tīmata te pāho a te **Ratonga Pouaka Whakaata Māori** ki runga aratuku i te 28 o Poutū-te-rangi, 2004, āmuri i tētahi karakia whakatapu atatū. He mahinga whakahirahira tā te Ratonga ki te kawe taonga, tikanga, reo Māori, me ngā āhuatanga Māori ki roto i ngā kāinga noho katoa o Aotearoa.

I te marama o Hakihea, 2003, i whakatakotohia e te Karauna he Tuhinga Tāpae, ki mua i a Te Arawa, mō te whakataunga o **ngā kerēme tūturu** katoa, a **Te Arawa, ki ngā roto, e 14, kei roto i te rohe o Rotorua**, me te whakatau i ngā take raru e toe ana mō te utunga, ia tau, ki te Poari Kaitiaki Māori o Te Arawa. I whakamanatia e te Poari Kaitiaki, tētahi mōtini ki te whakaāe ki roto i te mātāpono, ki te tāpae. I tēnei wā kei te hangaia e Te Arawa me te Karauna tētahi Tuhinga Whakatau hei whiringa mā te Komiti Matua a te Pāremata,

I te 2 o Poutū-te-rangi, 2004, te kawanga o **Tūhono**, te ringa whakahaere a te **Ratonga Whakawhanaunga Māori**. I whakatūria tēnei Ratonga ki te kohikohi pārongo whanaungatanga mai i ngā kaipōti katoa he uri Māori, ka tuku atu ki ngā iwi, me ngā rōpū hapori Māori, kia whiwhi huarahi tuatahi rātou ki te rēhita ki a rātou iwi, ā, kia taea ia iwi ki te hanga, me te whakahaere rēhita pono, nō ināianei tonu, mō a rātou mema.

He tūranga whakahirahira tonu tā Te Puni Kōkiri ki te whakahāngai i te whakataunga i ngā **kerēme ahumoana** atu ki ngā mātāpono o te Whakataunga Hi Ika, 1992. Ko te whakataunga nei, i tuku ki ngā iwi, e 20 ōrau o te tohatohatanga mokowā, i waenga i ngā tau, 1992 me 2004, me te 20 ōrau o ngā mokowā ahumoana hou, ka whakapuakina i ngā wā kei mua, hei whakataunga mō ngā kerēme arumoni takiwā katoa ki ngā rohenga ahumoana. Me te tau hoki o ngā whakautu a iwi, me te ahumahi ahumoana ki te whakataunga, i te mea kua whakawhiwhia he papanga mō te whanaketanga ōhanga Māori nui tonu.

Kua miramiratia e te **Arotake Pokapū i te Poari Hauora o te Rohe o Mātaatua** he whanaungatanga tino tōrunga i waenga i te Poari me te

Rūnanga Hauora Māori, te rōpū māngai o ngā iwi te kau mā waru o te rohe. I arotahi atu te arotake nei ki ngā whanaungatanga rautaki a te Poari atu ki a ngai Māori.

I runga i te tātari kaute hāngaitanga o te **Momo Putanga Mātauranga Māori me te Rangahau Whanaketanga**, kua tāmatahia e te Manatū mo te Rangahau, Pūtaiao me te Hangarau, te mahi rapu huarahi ki te arotake i te momo putanga. E hāngai ana tēnei momo putanga i te haumi ki te rangahau i ngā mahinga ‘nā Māori mō Māori’ me te whakapā nui atu ki ngā hapori Māori.

Kua hoki mai ki a Te Puni Kōkiri he whakautu tino pai rawa atu, mai i te Manatū Hauora mō te huarahi mahinga ngātahi i whakahaeretia i waenga i te tātari kaute hāngaitanga i te **Āraitanga Whakamomori Tamariki Taiohi**, me te mea kua whakamahia te taunakitanga nui o taua kaupapa.

I taunakitia, e te tātari kaute hāngaitanga o te ratonga **Akoranga Hohoko**, ētahi whakarerekētanga ki ngā whakahaere aroturuki, arotake i te Akoranga Huarahi Ake. I whakaāe te Manatū ki ngā taunakitanga katoa nei.

Raukaha

Mō te roanga o te tau 2003/04, i whakahaeretia ētahi mahinga ki te whakapai ake i tā mātou raukaha. Ka whakarārangitia ēnei ki raro nei.

Tuku mahi me te Whakawhanake Kaimahi

Ko te mahinga nui rawa atu mō 2003/04 ko ngā mahi e pā ana ki to mātou huarahi rautaki hou i pānuitia i te marama o Hui-tanguru i tēnei tau. I oti te whakatū i te kapa kaiārahi hou i te marama o Haratua, me te piki ake o te kaupapa o ngai Māori e angitu ana hei Māori. I runga i tā mātou arotahi hou ki te kaupapa here, te mahi tino whakahirahira mō te kapa kaiārahi whakahaere, he arataki, me te tautoko i te āhua hono a te kāwanatanga ki a ngai Māori.

Āmuri tonu i te whakatūtanga i a rātou, ko te mahi tuatahi mō ngā Hekeretari Kaitiriwā, he hanga i a rātou kaupapa tuku mō 2004/05, tētahi mahere whakamahi wāhanga, hei whakamana i te anga whakahaere, ngā hiahia raukaha, me ngā whanaketanga pūnaha, whakaritenga, ka mahia i te tau 2004/05. Hei wāhanga mō ēnei mahi ka whaiwāhi rātou ki ngā whakaritenga whakatū i ngā kaimahi ka mahi ki raro i a rātou. Mā te whakatū kaimahi ki ngā tūranga nei e whakawhiwhi papanga mō mātou ki te whakatutuki i tā mātou kaupapa whakarerekē.

I roto i te tau, i te haere tonu ngā whaiwāhitanga a ngā kaimahi ki ngā mahinga whakangungu me te whanaketanga, te mea nui ki roto i ngā wāhi tumu whakahaere, me te tiaki pūtea, te whanake kaimahi mā ētahi momo akoranga whare wānanga, me te tikanga whakawhiti kaimahi.

Tikanga Māori

Ko ētahi o ngā mahinga motuhake i āwhina i te whakakaha ake i ngā tikanga Māori, i roto i te tau, e whai ake nei:

- Haerenga ki ngā hui ā-rohe mō te Whanaketanga whānau, me ngā hui ā-motu mō te Takutaimoana me te Papamoana
- Kōrerorero ki tā mātou kapa whiriwhiri o Waho, me te kapa whiriwhiri Rautaki Reo Māori
- Whakanui ake i ngā mahi ki runga i ngā Marae Taonga Tuku Iho, me ngā Wāhi Tapu, me ngā mahi tohutohu mō ngā wāhi tapu.

Whakahaere Pūrongo ki Roto, ki Waho

I tīmatahia tētahi whakahaere hanga pūrongo i te wāhanga moata o 2003/04, me te mahi kia takoto pai te kaupapa i roto i te tau.

Whanaungatanga Whakawhiti Rāngai

Kua whakapakaritia a mātou whanaungatanga me ngā mahi inetahi ki te tautoko i ngā pokapū ake. Tūturu, e whai nei ētahi o ngā mahinga:

- *Hui Takutaimoana me te Papamoana* – i mahi tata ki ētahi pokapū, ki te Tari a te Pirimia me te Komiti Matua, te Tari Ture me Ngā Pirihimana.
- *Ngā Ika* – kua hainatia e mātou tētahi Tuhinga Whakamārama, e pā ana ki te Arotake Pokapū ka mahia mō te Te Tau Tiaki i ngā Tini a Tangaroa
- *Whaiwāhitanga ki roto i te Komiti Āpiha mō te Whakaheke Kore Ōrite*, te mea nui ko tā mātou tukunga āwhina ki tā rātou aromatawai i ngā kaupapa mo ngai Māori
- *Tari a te Kai Arotake Matua* – i konei i mahi tata mātou ki te hanga tūmanako arotake mō ngā whakahaere ā-rohe ki roto i te Ture Kāwanatanga ā-rohe
- *Manatū mō te Whanaketanga Ōhanga/ Te Tari Hokohoko, Hinonga o Aotearoa* – e haere tonu a mātou mahi tata ki ngā whanaketanga ā-rohe
- *Taone Nui Ukauka* – i konei i mahi mātou ki te taha o te Tari a te Pirimia me te Komiti Matua, ki te hanga mahere whaiwāhitanga mō ngai Māori
- *Poari Tohutohu Pārongo Tiriti* – kua whakatūria te Manahautū a Te Puni Kōkiri ki runga i te Poari
- *Whanaketanga Taiohi* – i āwhina mātou i te whakatū me te whakakī i te tūranga, āpiha ā-rohe Māori
- *Rautaki Ārai Whakamomori Pakeketanga-Katoa* – he māngai tō mātou i runga i te Rōpū a te Manatū Hauora ki te hanga rautaki
- *Manatū Hauora* – i whaiwāhi mātou ki tētahi hui mahi mō ngā tohu mahinga tari a te Manatū
- *Te Kōmihana o ngā Tari Kāwanatanga*- i hangaia e mātou tētahi tirohanga taiao mō te whakatū i te Manahautū.
- *Kāwanatanga Ā-rohe* – I mahi mātou ki te taha o ngā āpiha o te Tari Taiwhenua, Kāwanatanga Ā-rohe Aotearoa, Te Hapori Whānui o ngā Kaiwhakahaere Kāwanatanga Ā-rohe, ki te whakapūmau ka whiwhi rātou i ngā rauemi ārahi, ngā tauira whakangungu, mahinga tika, e pā ana ki ngā whakarite Māori i roto i te Ture Kāwanatanga Ā-rohe, te Ture Pōti Ā-rohe, me te Ture Kāwanatanga Ā-rohe (Reiti).

- *Pire Rawa Moana* – i konei i mahi mātou ki te taha o ētahi āpiha i runga i ngā kaupapa kōrero ki te Komiti Matua kia uru atu ngā kaupapa here a te Takutaimoana me te Papamoana
- *Kirimini Whanaungatanga Tiriti* – e whakamohiotia nei ko ngā taputapu whanaungatanga Karauna - ngai Māori – i mahi mātou ki te taha o te Manatū Ture, me te kōrero atu ki ngā pokapū i a rātou ngā huarahi āwhina ki te hanga anga hukihuki
- Whaiwāhitanga ki runga i te *komiti whakahaere o Mā te Reo*, me te wānanga tataunga iwi reo rua a te Tari Tatau o Aotearoa
- I whaiwāhi mātou ki ngā hui āpiha tōpū i tū, ia rua marama, ki te whakatere i te Rautaki Reo Māori

Pānui Mana Whakahaere

I raro I ngā wāhanga 35 me 37 o te Ture Moni Tūmatanui 1989, nā te mea ko ahau te Tumuaki Whakahaere o Te Puni Kōkiri, kei ahau te takohanga whakarite i ngā pārongo pūtea a Te Puni Kōkiri me ngā whakatau hei whakatutuki i aua pūrongo.

Kei ahau te takohanga whakatū, whakapūmau hoki, ā, kua tuhia, kua whakapūmautia e ahau he pūnaha whakahaere o roto tonu, e mau tonu ai te mana me te pono o te whakatakoto pūrongo pūtea.

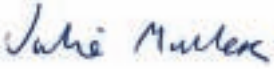
Ki ahau nei, he pono mārire ngā whakaaturanga o ēnei pūrongo pūtea i te tūranga, me ngā mahi a Te Puni Kōkiri i te tau i mutu ai i te 30 o Pipiri 2004.



Leith Comer
Manahautū

29 o Mahuru 2004

Kua haina tautoko anō a



Julie Muller
Kaiwhakahaere e Mahi ana mō te Kapa Moni

Putanga Momo 1:

Kaupapa Here Whanaketanga Māori

Kua rārangitia ki raro nei ngā whakatutukitanga nui:

- E 11 ngā hui i whakahaeretia, e 10 ngā hui i haere atu a Te Puni Kōkiri ki a ngai Māori mō te **Takutaimoana me te Papamoana**. Āhua 2500 ngā tāngata i tae atu, e 186 ngā tāpaetanga ā-waha, e 68 ngā tāpaetanga ā-tuhi i homaitia. I whakawhāititia ēnei ka tohatoha atu ki ngā kaituku me ngā tāngata i tae atu.
I whakatūria tētahi kapa mahi ki te whaiwāhi ki ngā wāhanga katoa o ngā whakaritenga whanake kaupapa here mō te Takutaimoana me te Papamoana. Ko Te Puni Kōkiri i ārahi i ngā mahinga kaupapa here i runga i ngā āhua whanaungatanga ā-rohe, me te whaiwāhitanga ki ērā take e rua e pā ana ki te Kooti Whenua Māori me te rohe tūmatanui.
- He rārangi tuhinga ki te Komiti Matua a Te Pāremata, nā konei te whakataunga mō te papa tukunga pāho mō te **Ratonga Pouaka Whakaata Māori**, te whakamanatanga i te ture, me te whakatinanatanga o te ratonga ki runga aratuku i te marama o Poutū-te-rangi, 2004.
- I te marama o Hakihea 2003, i whakamanatia e te **Poari Kaitiaki o Te Arawa** he mōtini ki te whakaāe ki te tāpaetanga a te Karauna ki te whakatau i a rātou kerēme katoa mō a rātou roto. Kua oti i tēnei whakataunga tētahi take tino toroa e pā ana ki ngā roto. Ko te tūmanako a Te Arawa, me te Karauna, ka haina poto rātou i te pukapuka whakamana, i te marama o Here-turi-kōkā 2004.
- I whakaāe ngā Minita ki te arotake whānui i te **Ture Taonga Tawhito**. I runga i ngā tohutohu mai i Te Puni Kōkiri, ka whakaritea e te Karaka o te Whare Pāremata, te whakakore i te **Pire Tiaki Taonga Māori**. Na reira kua waiho kia kotahi noa iho te wāhanga ture ki runga i te whāinga whānui – te whakamarumaruru i ngā taonga tikanga.
- I te marama o Kohi-tātea 2004, ka tautokohia e te Minita Whakawhiti Whakaaro Tiriti, me te Minita mō ngā take Māori, te **Pukapuka Mana Whakahaere o Te Whanganui-ā-Tara**, ki te tuku i ngā kaikerēme ki te whakawhitiwhiti whakaaro hāngai tonu.
- I hangaia tētahi Tuhinga Whakamārama i waenga i ngā Minita, Te Kaitiaki Māori o Tautoko, me te Kairēhita Matua o ngā Kaipōti, i te 7 o Kohitātea 2004. I whakatūria e tēnei tuhinga te **Ratonga Whakawhanaunga Māori** ki te kohi pārongo mai i ngā kaipōti Māori

katoa, he uri Māori, ki te hoatu ki ngā iwi hei hanga i a rātou ake rēhita mema.

I te 2 o Poutū-te-rangi, 2004, i whakatūria te Ratonga Whakawhanaunga Māori, a **Tūhono**. I te tīmatanga o Haratua, 2004, i tukuna atu ngā pukapuka tataunga iwi pānui Tūhono ki ngā kaipōti Māori, e 330,000. Neke atu ki te 100,000 ngā whakautu kua tae whakahoki atu, kā tata ki te kotahi toru o ngā kaipōti Māori, me te āhua 200,000 ngā kaiwhakawhanaunga.

- Kua whiriwhiria e Te Puni Kōkiri me ētahi āpiha, me pēwhea ngā whakataunga a te Komiti Matua a te Pāremata mō iwi me ngai Māori, e uru atu ki roto i te **Pire Ahumaona**, me te hui anō ki ngā māngai Māori. Kei te tuhia tonu ngā ture hukihuki.
- Nā ngā mahinga a te kapa **Whakahaere me ngā Whakatūtanga** i kitea e 142 ngā Māori kua whakatūria kua whakahokia rānei ki runga i ngā poari, ngā komiti, me ngā rōpū tohutohu, mō te tau 1 o Hōngongoi 2003 ki te 30 o Pipiri 2004.
- I tua atu i tēnei, i whakahautia a Te Puni Kōkiri ki te hanga i ngā pūrongo e whā, mō te Minita mō ngā Take Māori, ki te hopu i ngā whakaritenga arotake me ngā pūrongo a Te Puni Kōkiri, mō ngā pānga a te Karauna ki roto i Te Māngai Pāho, Te Taura Whiri i te Reo Māori, me te Ratonga Pouaka Whakaata Māori. I runga i ngā pārongo i homaitia e ngā pokapū, e toru ngā pūrongo mō ia pokapū, i tukuna atu ki te Minita mō ngā Take Māori, mō Te Māngai Pāho, mō Te Taura Whiri i te Reo Māori, me te Ratonga Pouaka Whakaata Māori, e kōrero ana mō ia toru marama i mutu i Pipiri, i Mahuru, i Hakihea, 2003.

Putanga Momo 2: Mahinga Rāngai Tūmatanui

Kua rārangitia ki raro nei ngā whakatutukitanga nui:

- E rua (whāinga whakapai ake e whā) ngā tātari hāngaitanga, me ngā take arotake pokapū i whakamanatia e te Komiti Matua a Te Pāremata, a ngā Mānahaui rānei.
- E toru (whāinga e rua) ngā pūrongo e hanga tonu ana mō te kaupapa mahi a te Rāngai Aroturuki i oti, i tukuna atu ki te Minita mō ngā Take Māori.
- E ono (whāinga whakapai ake e whitu) ngā pūrongo tātari hāngaitanga, arotake pokapū rānei, i tukuna atu ki te Minita, ki te Manahaui rānei, kia whakaāe rāua ki te pānui. I pupuritia te pānuitanga o tētahi o ngā pūrongo arotake pokapū ki te marama o Whiringa-ā-nuku 2004.
- E toru ngā pūrongo tātari hāngaitanga, ngā arotake pokapū rānei i whakamanatia e te Komiti Matua a te Pāremata kia tukuna ki te minenga:
 - o I te 15 o Mahuru 2003, i whakamanatia e te Komiti Matua a te Pāremata kia tukuna ki te minenga te **pūrongo, rangahau mātauranga me te whanaketanga Māori Momo Putanga: tātari hāngaitanga**.
 - o I te 10 o Haratua 2004, i whakamanatia e te Komiti Matua a te Pāremata kia tukuna te **pūrongo, kaupapa whanaketanga Hapori mō te ārai whakamomori Taitamariki**, ka tukuna i te marama o Pipiri.
 - o I te 21 o Pipiri 2004, i whakamanatia e te Komiti Matua a te Pāremata kia tukuna ki te minenga **ngā pūrongo, Akoranga manakōwhiri: tātari hāngaitanga, me te Kaupapa whakangungu a BIZ o Ahumahi Aotearoa mō ngai Māori**.
- I te 4 o Haratua 2004, i tukuna ki te tari, i whakawhiwhia ki ngā pokapū te **pūrongo, Arotake whāinga i muri mai o ngā mahinga kanataraki a te Tari Ratonga Tamaiti, Taiohi me ngā Whānau**.
- E ono (whāinga e whā) ngā pūrongo, rangahau i ngā āhuatanga o te tūranga hapori, tikanga me te ohanga mō ngai Māori, i tukuna. E whai ake ngā pūrongo:
 - o *Angitu Kaiwhakawhiwhi Iwi me ngai Māori*: he pūrongo rangahau o ngā patapatai ki ngā iwi angitu, ngā kaiwhakawhiwhi Māori, me ngā pokapū kāwanatanga.

- o *Titiro nui ki ngā Rōpū Kaimahi Whare noho*: He pūrongo ia toru marama, mō ngā ia mahi, me te kore mahi mō ngai Māori me tauwiwi, i ngā toru marama i Pipiri 2003, Mahuru 2003, Hakihea 2003, me Poutūterangi 2004.
- o *Ōranga me te Kore Ōrite ki Tamaki Makaurau*: he pūrongo mō te kore ōrite o ngai Māori noho taone, i te rohe o Tamaki Makaurau.
- E whā (whāinga e whā) ngā pūrongo rangahau mō te hauora o te Reo Māori, i tutuki, anei e whai ake:
 - o I whakaotia te pūrongo rangahau, te ***Tirohanga i ngā Wairua, ngā Wāriu me ngā Whakapono atu ki te Reo Māori***. Ka aroturuki tēnei rangahau i te haere a te Rautaki Reo Māori, arā, ngā mohiotanga whai tikanga me te tūranga o te reo Māori.
 - o ***Ngā Whakamahinga a te Rōpū Pāpāho i te Reo Māori***. Koia nei te pūrongo i tātari i ngā kitenga a te reo Māori ki roto i ngā pāpāho ā-tuhi.
 - o ***“Kei Te Ako Tonu Au”: Ngā rautaki mō ngā akonga reo tuarua i te reo Māori***. I tirohia tēnei rangahau me pēwhea ngā tāngata whakakaha ake i te wāhanga reo Māori kua mau i a rātou.
 - o ***Te Reo Māori i roto i te hapori***. I whakaputa i tēnei pūrongo, ētahi o ngā tauira o te whakaora mai i te reo i roto i ngā hapori, kia whiwhi pārongo me ngā ahua tauira hei whanake i ngā mahere reo iwi.
- I whakatakotohia tētahi pūrongo, whakahiato ā-tau, mō te hāngaitanga tari mō ngai Māori, ki mua i te Komiti Matua a te Pāremata.

Putanga Momo 3: Whakariterite me te Hoko Ratonga

Kua rārangitia ki raro nei ngā whakatutukitanga nui:

- I tuhia e ngā Kaiwhakahaere Ā-rohe he pūrongo ia marama, mō ngā take ā-rohe, me ngā mahi ka tukuna atu ki te Kāiwhakahere Ā-motu mō te Wāhanga Whakahaere me ngā Rohe. I roto i ngā pūrongo nei ko ngā:
 - pūrongo mō ngā wawao i oti
 - ngā rā nui i oti ai ngā mahinga
 - te roanga wā i pau ki runga i ngā kaupapa/ratonga
- I tutuki pai i a Te Puni Kōkiri ngā **hui whakapūmau whānau ā-rohe** ki Porirua, Kirikiriroa, Ngāmotu, Otautahi, Kaitaia, Whakatāne, Tamaki Makaurau, Tokoroa, Murihiku, Tūranga, me Heretaunga i mua o te mutunga o Whiringa-ā-rangi 2003. I whakamahia ngā pūrongo o ēnei hui ki te hanga i tētahi pūrongo mō ngā Minita i ngā take i puta mai.
- I tū te whakahaerenga pai o te **Wānanga Whakahaere Ā-motu tuatahi** ki Te Whanganui-ā-Tara i te tīmatanga o Hōngongoi 2003.
- I tukuna te pūrongo rangahau, mō te **Ōranga me ngā Ritekore ki Tamaki Makaurau**, ki Tamaki Makaurau. Āhua 50 ngā māngai o te ao rangahau/mātauranga i tae atu ki te hui tuku. I puta mai i tēnei pūrongo he māramatanga ake mō te momo o ngā ritekore i waenga i a ngai Māori me tauwiwi, me te ritekore i waenga i a ngai Māori kei ngā taone nui e noho ana.
- I oti te arotakenga i te kaupapa **Tāpoi Māori Ā-rohe**. I whakawhiwhi māramatanga mō ngā rerekētanga kua puta mai i te kaupapa Tāpoi Māori Ā-rohe, me ngā tohutohu ki te kawae pai ake i tēnei kaupapa.
- I whakarerekētia te ingoa o te Whāinga Hanga Raukaha atu ki **Whakapakari i te Whakahaere me te Whakarite o ngā Rōpū Māori** ki te whakaata i te arotahi atu ki ngā raukaha Whakahaere me ngā Whakaritenga.

I tukuna tēnei kaupapa ki Tamaki Makaurau ki Ngā Whare Waatea Marae, Mangere, i te marama o Kohi-tātea, 2004.

Putanga Momo 4: Whakahaere Ā-rohe

Kua rārangitia ki raro nei ngā whakatutukitanga nui:

- **Tuku Rawa Hāngai Atu** – I whakamanatia e te Komiti Matua a te Pāremata tētahi (whāinga toru) kaupapa Tuku Rawa Hāngai Atu, i te marama o Hui-tanguru 2004, ki te whakahaere a Mauriora, he kaupapa whakaiti i te whakarekerekē. I runga atu i tēnei, tekau ngā kaupapa i te whakahaere, ka tautokona.
- **Hanga Raukaha** - \$8.702 miriona i whakaratoa ki ngā kaupapa e 884 (whāinga 500) i tae atu, mai i ngā whānau, hapū, iwi, me ngā rōpū Māori.
- **Rōpū Tāpoi Ā-rohe Māori** - \$331,000 i whakaratoa ki te tautoko i ngā Rōpū Tāpoi Ā-rohe Māori e iwa (whāinga 12).
- **Kaitātaki-ā-rohe** - \$2.819 miriona i whakaratoa ki te tautoko i ngā kaimahi e 57 (whāinga 43).
- **Ratonga Whakarite Umanga Māori** \$2.687 miriona i whakaratoa ki te tautoko i ngā kiritaki e 871 i te mahi i roto i te Ratonga Whakarite Umanga Māori, ki ngā taumata kia whakakaupapatia rātou; e 112 ngā umanga (whāinga 200) i te mahi i roto i te kaupapa whakatūmanga umanga hou.
- I whakahaeretia tētahi **whakaari whakawhiwhi** ki te whakanui i te angitu o ngā kiritaki o te kaupapa RWUM i roto i ngā ahumahi kākahu, kai, me te whakangahau. He maha ngā kaiwhakahaere umanga Māori i tae atu, 50 - 70, me ngā māngai kāwanatanga o Hokohoko me Hinonga Aotearoa, Kaitiaki Poutama, me te Manatū Tāpoi. Nā te whakaari nei ka wātea mai he huarahi ki ngā kiritaki ki te mahi tahi, tētahi ki tētahi, ki te whakamohio atu ki ngā mahinga a ētahi.
- I tukuna tētahi tāpaetanga ki te **Hui Taumata Ōhanga o Tauranga Moana**, i te 30 o Kohi-tātea 2004, me te pai hoki ki ngā kaiwhakarongo. I whakamārama atu te tāpae ki ngā hapori umanga Māori o Tauranga me ētahi ake i te hiahia mohio atu ki te whanaketanga ōhanga, ki te huarahi haere a te kapa whanaketanga umanga, me ētahi ake take, pēnei i te whakahaere whenua.
- I whakatuwheratia e tētahi kiritaki, a **Kiwitaka Ltd**, tā rātou umanga i te 21 o Pipiri 2004, ki tētahi pō whakangahau ki Kuinitaone. He maha tonu ngā manuhiri i tae atu ko ētahi ko; RWUM, mema rūnanga, te hapori Māori, tāngata rangatira, me te hapori o Kuinitaone.

Te Pai o te Whakaiti Ngā Ritekore

Kua maha ake i te tekau tau te kāwanatanga e whakauru kaupapa here me ngā mahinga e hāngai ana ki te whakapūmau kia ōrite ngā huanga mō ngai Māori. Kua whakaaturia te otinga pai o ēnei mahinga nā te pai ake o ngā āhuatanga mō ngai Māori i roto i ngā wāhi tikanga, akoranga, me ngā wāhi hapori.

He taupori taiohi, tipu tere, te taupori Māori, nā reira me kaha ake ngā mahi ki te whakapūmau kia haere tonu ngā āhuatanga angitu ki runga i a rātou mō ngā wā kei mua. Kia haere tonu ki runga i te papanga taumata eke, mā reira ka mau tonu te taiao o *ngai Māori ka eke angitu hei Māori*.

Hei wāhanga mō tēnei, ka whaiwāhi atu a Te Puni Kōkiri ki ngā kaupapa me ngā mahinga ritekore, ki te mahi tata ki a ngai Māori ki roto i ngā hapori, kia pūmau te māramatanga ki ngā kaupapa here, ngā mahinga me ngā ratonga a te kāwanatanga, ki a rātou kei ngā rohe kāinga, ā, ko te mutunga ka tatū ki te matakite whānui a Te Puni Kōkiri, arā, a ngai Māori e angitu ana hei Māori.

Kei te mohio rawa atu a Te Puni Kōkiri mehemea ka mahi noaiho mātou ki runga i ngā āhuatanga ritekore, me te rawakore, e kore e tutuki i a mātou te whakatika i ngā whīwhinga me ngā whakaritenga pūtake o te rawakore. Nā reira ka uru tonu atu te rautaki a Te Puni Kōkiri mō te whakaheke ritekore, ki roto i te anga huanga whānui ake a Te Puni Kōkiri, o *ngai Māori e angitu ana hei Māori*.

Ahakoia ka tīmata ngā mahinga whakaiti ritekore mai i te anga whakaiti ritekore, ko ngā putanga me ngā huanga a ngā mahinga e whāia ana, koia nei ngā mahi ka anga atu ki te anga huanga whānui, o *ngai Māori e angitu ana hei Māori*.

Ngā Rautaki

Ko ngā rautaki e mahia ana e Te Puni Kōkiri ki te whakaiti i ngā ritekore i waenganui i te Māori me tauwiwi, me te whakateri i te whanaketanga hapori, ōhanga, tikanga tau iho hoki a te Māori e whai iho nei:

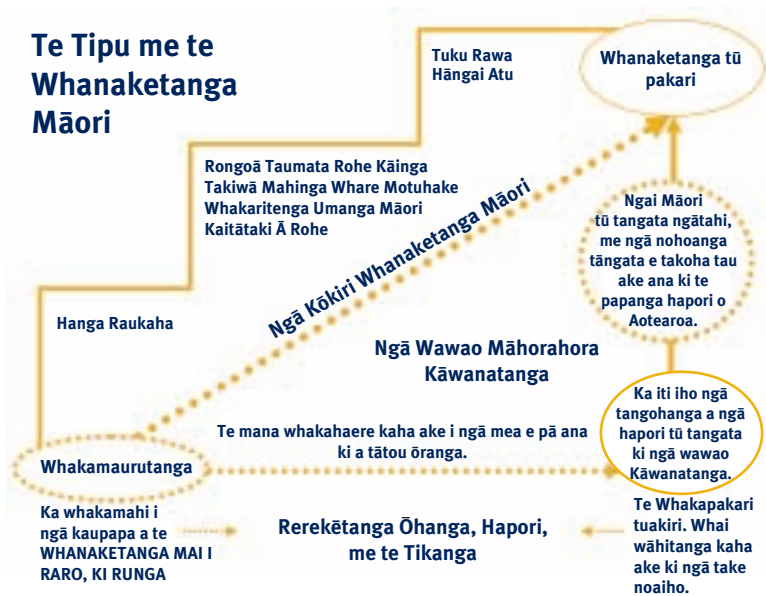
- āwhina i te mahi whakakaha whānau, hapū, iwi, me te Māori, me ngā rōpū Māori, kia tū rātou ki te whakahaere i o rātou ake whanaketanga me te whakatutuki i o rātou ake whāinga, mā te ārahi i te rāngai tūmanui i roto i te whakatutukitanga o te kaupapa here hanga raukaha Māori, a te Kāwanatanga.
- te whakarato tohutohu rautaki ki te kāwanatanga mō te whakamahi tika i āna rawa, me te whanake i ōna whakakuhunga rautaki e ahei ai, e tareka ai te whanaketanga Māori me te whakapai ake i te noho hapori, tikanga, ōhanga a te Māori, menā ka whakaritea tana noho ki tēra o tauwiwi.

Ka tutuki tēnei huarahi kōmitimiti o te mahi tahi ki ngā whānau, hapū, iwi, me ngā hapori Māori, mā te tuku rawa, te tautoko, te whakapakari, me te whakaterere ake i tā rātou whanaketanga me tā rātou tiputanga. He rite tēnei huarahi ki te whāinga whānui a te Kāwanatanga mō ngai Māori: ki te whakaiti ritekore, ki te whakapai ake i ngā huarahi, me ngā tautokohanga mō te angitu mō ngai Māori. Ka takoto pai anō tēnei huarahi i ngā whāinga a te kāwanatanga whānui, me te hanga i tētahi papanga pakari, te kawē huarahi pai ake ki ngā kainoho tangata whenua o Aotearoa.

Ngā Kaupapa me ngā Ratonga e Hāngai ana ki te Whakaiti Ritekore

Hei wāhanga mō a mātou whakaaro ki te āwhina i a ngai Māori ki te whaiwāhi me te angitu hei Māori i te tau 2003/04, i kawea e Te Puni Kōkiri ētahi kaupapa pūtea ki ngā rōpū, me te whakawhiwhi Tātari Hāngaitanga i ngā kaupapa i te kawea e ētahi ake pokapū kāwanatanga.

Kei te hoahoa e whai ake nei e whakaatu ana i te huarahi arapiki, nā reira tā mātou kawenga kaupapa i āwhina i a ngai Māori e angitu ana hei Māori.



I runga atu i tēnei, he hononga kaimahi ā-rohe tā Te Puni Kōkiri, āhua 100 rātou, e mahi ana ki te taha o ngā whānau, hapū, iwi, hapori Māori, me ngā rōpū Māori, ki te hokohoko, te whakarite, me te whakahaere huarahi wātea hei whakatere ake i te whanaketanga Māori. Kua rārangitia ngā ratonga motuhake ki raro nei:

- te hokohoko pārongo me ngā rawa mō ngai Māori
- te hokohoko me te whakarite mō ngai Māori ki ngā rawa me ngā ratonga kāwanatanga
- te whanake huarahi wātea mō te whanaketanga ōhanga, hapori, me te tikanga, ki ngā wāhi kāinga me ngā rohe
- te whakahaere i ngā pūtea Hanga Raukaha
- te whakatū Hui Waenga rāngai ā-rohe
- te whakawhiwhi pārongo whānui me ngā tohutohu ki te minenga.

Kaupapa Hanga Raukaha

(2003/04 \$8.080m i wehewehea, \$8.080 i whakapau)

Ko te whāinga tuatahi a te Hanga Raukaha he whakapakari i te kaha o ngā whānau, hapū, iwi, rūpū Māori, me ngā hapori Māori. Te wāhanga arotahi nui tonu mō te pūtea hanga raukaha, ko te tautoko i te whanaketanga rautaki, hanganga, pūnaha, me ngā pukenga ka āhei te Māori ki te whakatutuki i a rātou hiahia whanaketanga. (GAP(00) 5)

Te raukaha e whāia nei e Te Puni Kōkiri ko te kaha o te whānau, hapū, iwi, rūpū Māori, me ngā hapori ki te hanga huarahi, me te whakamahi i a rātou ake wā tika, me ngā wero.

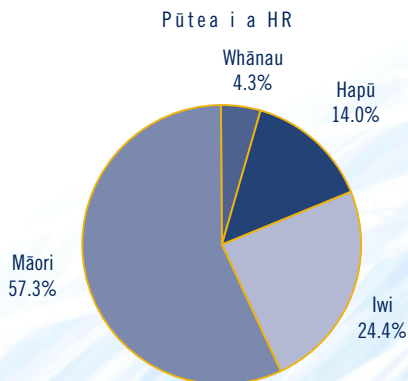
Ka rapu te rūpū i ngā huarahi me ngā hua ki ngā tuwheratanga taha ōhanga, hapori, tikanga tuku iho rānei. Ko tā Te Puni Kōkiri he rapu i ngā rauemi hei tautoko i ngā kaupapa nei.

Taketake ana te kaupapa Hanga Raukaha i roto i te whakaaro, ka taea tonu e ngā hapori te whakahaere i a rātou anō; i runga i tērā, tukuna katoa ai te mana whakahaere mo te hātepe whakawhanake ki roto i ngā ringaringa o te rūpū. Ko ngā whāinga matua a Te Puni Kōkiri i roto i te take whakarahi ake, ko te tautoko i:

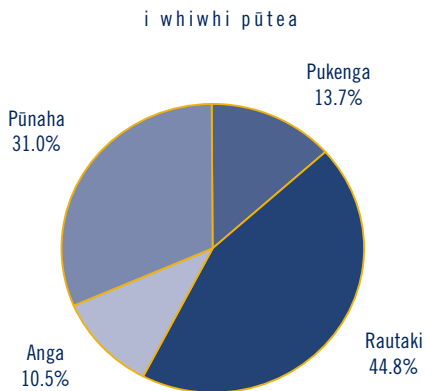
- te whanaketanga mai raro
- ngā huarahi ngāwari, hou hoki mo ngā take kei ngā rohe.

E 858 te tōpūtanga mahinga i whiwhi moni, e 462 ngā mahinga i raro iho i te \$2,000, me te 396 ngā mahinga i waenga i te \$2,000 me te \$168,000.

Ngā momo mauri i whiwhi



Mahinga a ngā kaupapa



Arotakenga

I oti te arotakenga i te tau 2003/04. I tirohia e te arotakenga te whakapātanga a te kaupapa Hanga Raukaha ki ngā kaiwhaiwāhi i roto i ngā momo whiwhi pūtea e rua. I tirohia anō e te arotakenga kia kitea ngā huanga i puta ki a rātou i whaiwāhi ki roto i te kaupapa. Ko te kitenga whānui he pai ngā whakapātanga atu ki ngā whānau, hapū, iwi, rōpū Māori, me ngā hāpori Māori i patapataitia. Neke atu ki te 2000 ngā rōpū kua whaiwāhi ki roto i tēnei kaupapa i ngā tau 2001/02 - 2002/03. E 63 ōrau o rātou i whaiwāhi ki te kaupapa i roto i te wāhanga \$2000 iti iho rānei, e 13 ōrau (\$3.3m) o te pūtea i tukuna mō te rua tau.

Ripanga A: Ngā Tohanga Pūtea me te Maha

	Rōpū		Pūtea	
	(No's)	(%)	(\$m)	(%)
Over \$2,000	1,138	37	22.02	87
\$2,000 or less	1,922	63	3.32	13
	3,060	100	25.34	100

Ko ngā mauri whānau ngā rōpū mauri nunui i whaiwāhi ki roto i te kaupapa. Te take i pēnei ai, e 640 ngā mauri whānau i whaiwāhi ki roto i te wāhanga \$2000 iti iho rānei. Ko ngā mauri Māori whānui ngā rōpū tuarua (39 ōrau o ngā kaiwhaiwāhi katoa) i whaiwāhi ki roto i te kaupapa me te whiwhinga i te wāhanga nui o te pūtea i tukuna (\$6.6m).

Ripanga B: Korahi o te Pūtea i Whiwhia
2001/02-2002/03

	Rōpū		Pūtea	
	(No's)	(%)	(\$m)	(%)
Pan-Māori	545	26	6.63	39
Iwi	298	14	4.35	25
Hapū	433	21	2.87	17
Whānau	738	35	2.10	12
Taura Here	82	4	1.18	7
	2,096	100	17.13	100

I wāwāhitia ngā huanga i eke ai ngā kaiwhaiwāhi i raro i te Hapori, Ōhanga, Tikanga me te Kaupapa kei raro. Tētahi, i puta mai ētahi huanga pai kahore i whakaarohia kia puta. Arā hoki, i roto i te pūrongo a tētahi rōpū, i puta mai te kōrero i eke rātou ki roto i te āhua ōranga, i kaha ake a rātou toitoi manawa, me te mārāma ake o tā rātou matakite mō ngā wā kei mua.

Whakapakari i te Whakahaere me te Whakarite (WWW)

(2003/04 – \$0.520m i wehewehea, \$0.519 i whakapau)

I whakamahia te kaupapa WWW i te tau 2003/04 hei mahinga matawhāiti ki raro i te kaupapa Hanga Raukaha. Ka whakamātautia te kaupapa WWW i te wā Hakihea 2003 – Pipiri 2004 ki ngā rōpū Māori e 26.

Ko ngā whāinga tuatahi a te kaupapa he:

- whakapūmau ka eke ngā rōpū Māori, kei te whakamahi i ngā kanataraki ratonga kāwanatanga, ki ngā huanga teitei tino pai, me te mahinga pono ki a rātou kaupupuri pānga
- takoha atu ki te tipuranga ki ngā rōpū Māori pakari, hei whakatutuki i a rātou whāinga, ka hopu atu i ngā huarahi pai kei mua.

Ko ngā rōpū e whāia ana, ko aua rōpū Māori kei:

- roto i ngā wāhanga 'Whanaketanga' wāhanga 'Whakatūtanga' rānei a te hurihanga umanga ōranga
- kei te hāpai mana whakahaere nui tonu mō te tuku ratonga, te whakahaere taonga rānei
- te whiwhi i te pūtea \$800,00 neke atu rānei ia tau, mai i ngā kanataraki ratonga ki te kāwanatanga.

E toru ngā wehenga kei te kaupapa:

1. he **tātari motuhake** i ngā takotoranga whakahaere me ngā whakaritenga o ia rōpū Māori
2. **Huarahi whanaketanga** me ngā **rautaki whakatakoto** ki te whakatutuki i ngā hiahia kua kitea i roto i ngā rohenga whakahaere, whakarite rānei
3. **Āwhina whakarite, hokohoko a Te Puni Kōkiri tari ā-rohe**, ki te rapu tautoko tika (mēnā e tika ana) kia tutuki ngā hiahia kua kitea.

Ka whakawhiwhi e te kaupapa WWW tētahi tātari motuhake i ngā mahinga whakahaere o ngā wāhanga whakarite, whakahaere nui tonu.

Mā Te Puni Kōkiri ngā kaitātari motuhake e kanataraki ki te whakahaere i te tātari rōpū. Ko te putanga nui o te tātari ko tētahi pūrongo matatapu ka tukuna atu ki te rōpū, me te:

- whakanui i a rātou kaha whakahaere e pā ana ki te whakariterite me te whakahaere

- tohu i ngā wāhi me whakapai ake, me te taunaki i ngā rautaki motuhake hei whakapai ake i ēnei wāhi
- tohu i ngā wāhi tērā he whakararu me te whakamohio i ngā whakahaere āta tiaki i ēnei
- āwhina tika i te huarahi rautaki a te rōpū me ngā whakaritenga whakatau.

He tino matatapu te pūrongo, me tuku kapi katoa ki te rōpū anake. Kei te rōpū te mana ki te whiriwhiri i ngā taunakitanga mai i te pūrongo ki tētahi o ngā kaimahi ā-rohe a Te Puni Kōkiri, hei papa mō ngā rautaki mō mua.

Arotakenga

Kua maheretia he arotakenga mō tēnei kaupapa hei te tau pūtea 2004/05.

Kaitātaki Ā-rohe (KAR)

(2003/04 \$3.300m i wehewehea \$3.019 i whakapau)

I tīmatahia te kaupapa KAR i te marama o Hōngongoi 2002 no tētahi wāhanga a te pūtea Kaimahi Whanaketanga Māori a Te Puni Kōkiri.

Mā te kaupapa nei e hono i tētahi āputa kua kitea i roto i te huarahi whanaketanga o ngā rōpū Māori mē ngā whakarite a te kaupapa Hanga Raukaha.

E rapu ana te KAR ki te hanga taiao kia mahi tahi te Kāwanatanga ki ngā whānau, hapū, iwi, hapori Māori, me ngā rōpū, ki te whakatere i a rātou hiahia whanaketanga mā te āwhinatanga a tētahi kaimahi whanaketanga Māori.

Ka here hāngai tonu te kaupapa nei ki te whanaketanga Māori, i te mea ko te kaimahi whanaketanga Māori nei:

- ka tohua mai i te hapori, ka mahi tahi, ka tū i raro i te hapori
- ka mahi ki runga i ngā kaupapa whakahau a te hapori
- ka tautokona e Te Puni Kōkiri, me te hapori.

I roto i te tau pūtea 2003/04, e 57 ngā kaimahi KAR whanaketanga Māori e whakaoti ana i ngā mahinga whakatere i te whanaketanga Māori. E whai ake nei tētahi tauira mahinga KAR.

Poari Kaitiaki Māori o Maniapoto

(kaitohutohu tohunga ināiane)

I te whaiwāhi tata tonu tēnei kaimahi nui ki ngā mahi hanga i te raukaha a te poari Kaitiaki, me tōna iwi e hiahia kaha ana ki ngā tautokohanga hapori, hauora, ōhanga. Kua whakaahuatia te poari kaitiaki nei kua ahu mai i ngā āhuatanga kaihou, me te hotohoto o te iwi ki te poari, atu ki te pupuri pūtea, me te whakaaro pai a te iwi ki a rātou.

Kua whakamaua e te kaimahi nei e \$4m, i roto i ngā kanataraki kaihiwhihi ratonga mō te poari Kaitiaki i runga i ngā momo āhuatanga whānui o ngā ratonga kāwanatanga i roto i te hauora, rongoā, waka hari, whare noho, me te akoranga.

Kua taea e ngā pūtea nei, te Poari Kaitiaki o Maniapoto ki te whakatū pakari anō i tōna anga, me ōna mahinga, i roto i ēnei mahinga ko te tuku tautoko ki ngā kaiwhiwhi e herea ana ki te poari, ki te hanga tonono, te arotūruki, te tuku, me te whakatutuki i ngā tikanga hanga pūrongo mō a rātou mahi tuku ratonga. Kua huri te kaimahi nui ināianei ki ētahi kaupapa whanaketanga whānui ake, ki te hanga papa ōhanga me ngā take pēnei i ngā mahi umanga ika.

I mahia tētahi arotakenga i te tau pūtea 2003/04. I whai ki te āwhina i a Te Puni Kōkiri arotake i te hāngaitanga o āna tikanga tuku i te kaupapa KAR ki ngā whānau, hapū, me te iwi.

Kei roto i tētahi pūrongo hukihuki mo ngā kitenga, i tēnei wā, a te arotakenga, kua rārangitia i raro i ngā wāhanga a te whakaritenga KAR, kei raro hoki i ngā kupu ūpoko whānui o *Ngā Kaiwhakarite o te Angitu*, *Ngā Aukati i te Angitu*, *Ngā Wāhanga hei Whakapai Ake*, me *Ngā Huanga a te Kaupapa*. Ko te whakaaro ka tukuna te pūrongo arotakenga whakamutunga i mua o te mutunga o te marama o Whiringa-ā-nuku 2004.

Wāhi Mahinga Whare Motuhake (SHAZ)

(2003/04 \$0.500m i wehewehea, \$498,000 i whakapau)

Ko te whāinga matua o SHAZ ko te whakatutuki i te tino kore nei o te whare i ētahi rohe hiranga, mā te whakatenatena ki te tuku pūtea ki tētahi hapū, iwi, hāpori rānei.

Ko tētahi whāinga tuarua, kia hua ētahi painga, mai i ia kaupapa hanga whare e hāngai ana ki ngā whāinga hāpori a te Kāwanatanga, pēnei i te whakapiki hauora, te whiwhi mahi, whakangungu rānei mo ngā whānau, hapū, iwi, me ngā mema o ngā hāpori.

Ko te mea rerekē a SHAZ, ki ētahi atu hōtaka whakatū whare, e hāngai ana tēnei ki ngā hāpori, kahore ki ngā kāinga kotahi.

E rua te kau ngā mahinga whare i tautokona e te pūtea whakahaere o SHAZ mō te tau pūtea 2003/04. Te pūtea i whakawhiwhia kei waenga i te \$4000 ki te \$48,500. I whakamahia tēnei pūtea ki te āwhina i ngā hāpori whanake i ngā mahere, me ngā taputapu whakatinana, ki te whakatika i ngā hiahia whare taumaha i roto i a rātou ake hāpori.

Mō te wā poto, ko te huanga i whakaarohia mai i SHAZ, he whakapainga ake nui tonu i ngā ahuatanga whare noho mō ngā whānau kua tohungia i roto i ia wāhi o SHAZ. Ko te huanga mō te wā roa, kia whiwhi ngā hapū, iwi, me ngā hāpori Māori rānei, i te raukaha pakari ake ki te whakawhiwhi whare noho pai, utu ngāwari, i waho ake o te whaiwāhitanga a te kāwanatanga. E whai ake i raro nei tētahi tauira mahinga a SHAZ i roto i tētahi hāpori.

Te Rūnanga o Te Rarawa

Kua whakamaua e te Rūnanga tētahi rautaki e whai ana ki te hanga kia 200 ngā whare hou mō a rātou tāngata i roto i te rima tau.

Ko te whaiwāhitanga a te rautaki rūnanga, he mahinga i te “kāwanatanga katoa”. I tīmatahia tēnei whaiwāhitanga hou i te pātanga o ngā waipuke urupatu ki Hokianga i te tau 1999, me te matenga aituā o ētahi o rātou i roto i ngā whare āhua hē.

I whakamahia e te rūnanga te pūtea Hānga Raukaha a Te Puni Kōkiri ki te hanga whakahou i tā rātou rōpū, ki te whanake anō i tā rātou rautaki hanga whare noho. Kua hangaia anō e rātou he whanaungatanga tau ake ki te tari Whare Noho Aotearoa.

Rongoā Taumata Rohe Kāinga

(2003/04 - \$2.452m i wehewehea, \$2.799m i whakapau)

Ko te whāinga tuatahi a te Rongoā Taumata Rohe Kāinga (LLS) he hanga ngātahi i ngā hāpori Māori, mā te tuku moni hei āwhina i ngā kaupapa e mahia ana e ngai Māori ki ngā rohe kāinga. E urupare ki ngā hiahia kua kitea e ngā whānau, hapū, iwi me ngai Māori hei āwhina i a rātou ki te whakaiti i a rātou mahi, me te whakatutuki i ngā whāinga wā roa, mō aua nohanga.

Puao Te Ata Tū A Tuhoe

(\$0.941m i wehewehea, \$0.925m i whakapau)

Ko Puao Te Ata Tū A Tuhoe he rōpū māngai mō ngā papanga e rima, i roto i Te Rohe Potae O Tuhoe. Ka whai ngā papanga e rima ki te rapu i ngā wāhi kia whakatikaina te whiwhi ratonga, te whakakaha, me te whakanui ake ngā ratonga hauora, mātauranga, whiwhi mahi, tiaki ārai, hanga whare, me te reo Māori. Ka mahia ngā whanaketanga i runga i te papanga pārongo pakari, kua kohia e te rōpū kaitiaki, ka taunaki, ka whakarite huarahi ki ngā rawa tika hei whakatika i ngā hiahia, ngā take nui, me ngā pānga a rātou mā e noho ana i roto i Te Rohe Potae o Tuhoe.

Te Kaitiaki Mahi o Waiapu

(\$0.366m i wehewehea, \$0.366m i whakapau ki te 30/6/04)

I whiwhi pūtea te Kaitiaki Mahi o Waiapu ki te whakapakari i ngā mahinga a te kaitiaki, e whakahaere ana i roto i te Tairāwhiti, ki te whakawhiwhi tūrangā mahi tanu rākau, mahi pāmu, mō ngai Māori.

Rangatahi o Ngāti Hinearo – Kaiwhakawhiwhi Ratonga Hangarau Pārongo o Ngāti Tuera

(\$0.165m i wehewehea, \$0.080m i whakapau ki 30/6/04)

I whiwhi pūtea te Rangatahi o Ngāti Hinearo – Kaiwhakawhiwhi Ratonga Hangarau Pārongo o Ngāti Tuera, ki te whakatū i tētahi kaupapa Pārongo Hangarau ki runga marae, ki te ako i ngā mārau, hanga ipurangi, whakatika tuhinga whika, hanga whakairoiro, me te hanga kaupapa rorohiko.

Te Hapori Whānui Whai mana o Ngā Rauru

(\$0.380m i wehewehea, \$0.000m i whakapau)

I whiwhi pūtea Te Hapori Whānui Whai mana o Ngā Rauru ki te whakamahi i ngā poraka whenua pakupaku kei ngā marae o Ngā Rauru, ki te whakanao me te hoko hua momo kai me ngā hua ahuone.

Kei te haere tonu ngā mahi whanake a ngā Rauru ki te whakahere i a rātou wae umanga e toru – ko ēnei ko tētahi pārekereke tipu Māori, ngā hua amiami Māori, me ngā hua māra kai, whare kākāriki.

Te Rūnanga o Ngāti Porou

(\$0.347m i wehewehea, \$0.287m i whakapau)

I whiwhi pūtea Te Rūnanga o Ngāti Porou mō ngā mahinga e toru, e whai ake nei:

Whanaketanga Hinonga

Te whakarite i tētahi rautaki te kau tau, ka aro atu ki te whakaheke i ngā taumata kore mahi kei roto o Ngāti Porou. Ka whai te pūrongo ki te whakatakoto huarahi mārama hei tautoko tāngata, me ngā whānau ki te hono atu ki ngā mahinga whiwhi moni, ki te whati i te āhuatanga ōhanga pōhara i te tautāwhi i ngā āhuatanga hapori, me te whakatipu ōhanga ki Ngāti Porou.

Whakahaere Taiao Ukauka

E whai ana tēnei mahinga ki:

- te whakatū i te Rōpū Taiao o Ngāti Porou, ko tōna mahi he hanga i te Mahere Whakahaere Taiao mō Ngāti Porou, me te tū hei kaiwawao mō ngā take taiao.
- Te whanaketanga o tētahi rautaki whakahaere taiao tōpū mō te rohe o Ngāti Porou.

Whanaketanga Whānau me ngā Hapū

Te mahi tahi ki ngā hapū me ngā whānau a Ngāti Porou ki te whakaatu huarahi mō te momo whanaketanga e arotahi ana ki te whakapakari i ngā tūranga o ngā hapū, me ngā whānau, ki te whaiwāhi kaha tonu ki te whanaketanga hapori, Ohanga, me ngā tikanga.

Arotakenga

Kua hangaia tētahi arotakenga i ngā kaupapa Rongoā Taumata Rohe Kāinga, i tēnei wā kei te tuhia te pūrongo hukihuki. Ko te whakaaro ka tuku pānuitia te pūrongo arotakenga tūturu i mua o te mutunga o te marama o Hakihea.

Pūtea Kaitohutohu Motuhake

(2003/04 - \$2.756m i wehewehea, \$2.328m i whakapau)

Te pūtea Kaitohutohu Motuhake he wāhanga o te kaupapa Hanga Raukaha. Ko te whāinga tuatahi a te pūtea Kaitohutohu Motuhake he tuku kanataraki atu ki ngā kaitohutohu tohunga me ngā kaimahi nui ki te mahi ki te taha o ngā rōpū Māori me ngā hapori Māori, ki te whakawhiwhi tohungatanga me ngā mātauranga e tautoko ana i ngā mahinga hanga raukaha.

I te tau 2003/04, 34 te tōpūtanga tūranga Kaitohutohu Motuhake i whiwhi pūtea mai i te kaupapa. E rua ngā tauira whakaritenga kaimahi nui kua rārangitia ki raro nei:

- I kitea e te whakaritenga kaimahi nui ki Te Rūnanga O Te Whānau, i Te Kaha, a Te Puni Kōkiri e whakawhiwhi kaimahi nui me ngā kaitohutohu motuhake e āwhina ana i te hanga raukaha mō ngā pūnaha whakahaere me ngā raukaha hangarau pārongo a te Rūnanga. Tokomaha ngā

mahinga nui pērā i te whakaurunga i mahi whakangungu rorohiko a Cisco, ki roto i ngā kura o te rohe Rāwhiti o Mātaatua, te whakatūtanga kura motuhake ki ngā rohe ake, te ahumahi hanga whare, me ngā mahinga ngātahi rāngai kāwanatanga mō ngā kaupapa tautokorua i roto i ngā mahinga hangarau, koia nei ngā hua e kitea ana, e puta tūturu ana ki te hapori.

- He whakaritenga ki te arotake i te whaihuatanga me ngā ara mō tetahi iwi ki te whakatutuki i āna mana whakahaere taiao nui tonu i raro i te āhua ukauka. I whakamahia e te whakaritenga tētahi kapa tohunga, ki te whakahaere i te rangahau, te hono atu ki te iwi, me te taunaki mahi whakatika e takoto pai ana ki te huarahi, te anga te tūranga me ngā mana whakahaere a te iwi.

I whakatinanatia tē pūtea i raro i te kaupapa KAR i te tau 2003/04.

Aromatawai Hāngaitanga

(2003/04 - \$2.769m i wehewehea, \$2.296m i whakapau)

Ko te whāinga tuatahi a tēnei kaupapa he whakamātau i ngā mahinga kaupapa rāngai tūmatanui, me ngā ratonga e pā ana ki te Māori, kia kitea he huarahi whakapai ake i aua mahinga.

Ka pā tika tonu ngā mahi aromatawai hāngaitanga ki te whakaiti i ngā

- Papa pārongo a te Kāwanatanga mo ngā kaupapa e mahi pai ana mō te Māori; me ngā
- Pono mārāma i te whakahaere o ngā kaupapa me ngā ratonga.

I runga i te whakarite kia rere pai ngā whakahaere mahi, kua mahia e Te Puni Kōkiri he kaupapa mahinga aromatawai wehewehe, kia taea te āta whakatakoto i ngā pūrongo i roto i te tau. E whai ake nei ngā whakamāramatanga mō te haere o ngā mahi aromatawai ki runga i ngā kaupapa i fimatahia i te tau i mutu i te 30 o Pipiri 2004.

Ripanga: Te Haere o ngā Aromatawai

<p>Ngā Aromatawai (i oti i te tau 2002/03) i tukuna tika atu i te tau 2003/04</p>	<ul style="list-style-type: none"> • Mātauranga Māori me ngā Momo Putanga Whanaketanga (Manatū Rangahau, Pūtaiao, Hangarau) – tuku ki te minenga • SHAZ – Mōkete Whakairi Whakapai Whare (Kaporeihana Hanga Whare Aotearoa)
<p>Aromatawai kua oti i tukuna tika atu i te tau 2003/04</p>	<ul style="list-style-type: none"> • Ārai Whakamomori Tamariki Taiohi (Manatū Hauora) – tuku ki te minenga
<p>Aromatawai (i oti i te tau 2002/03) taihoa nei ka tukuna i te tau 2004/05</p>	<ul style="list-style-type: none"> • Mātauranga Ake (Manatū Mātauranga) – tuku ki te minenga • Whakangungu BIZ – (Ahumahi Aotearoa) – tuku ki te minenga • Pūtea Whanaketanga Whakamau (Manatū Tāiao) – tuku ki te minenga • Mahinga Ngātahi (Manatū Whanaketanga Hapori) – mā te Komiti Matua a te Pāremata e whakatau i te rautaki tuku
<p>Mahinga Aromatawai kua oti, me ngā pūrongo aromatawai kua tukuna ki te pokapū aromatawai, mō a rātou whakaaro</p>	<ul style="list-style-type: none"> • Ratonga Tautoko Kura (Manatū Mātauranga) • Ratonga Tamariki Whakatau ā-rohe (Manatū Mātauranga)
<p>Mahinga Aromatawai kua oti</p>	<ul style="list-style-type: none"> • Whanaketanga Kaimahi Hauora Māori (Manatū Hauora me te Komiti Tohutohu Kaimahi Hauora)

Aromātai

He whakaritenga hakune i te ārahi i ngā aromatawai katoa, me te whakahaere i raro i ngā Aro Whānui Ngaio, kua whakatakotohia i roto i te Pukapuka Aroturuki Rāngai. I runga atu i te mahi ki raro i ēnei aro whānui pai, e rapu arotakenga motuhake ana a Te Puni Kōkiri i ētahi o ngā aromātai e kōwhiria ana. Kua rārangitia ki raro nei ngā aromatawai o te tau 2001/02 i tirohia e te aromatai o te tau 2003/04:

- Mahinga Ngātahi Huarahi Whika (Manatū Mātauranga)
- Pūtea Kairapu Taiohi Māori (Tamaiti, Taiohi me te Whānau)

I kitea e te aromātai te tino pai o te whanaungatanga a Te Puni Kōkiri ki ngā pokapū i aromatawaitia – ko te whakaaro he rōpū ngaio te rōpū aromatawai.

He mea whakahirahira rawa atu te whanaketanga ngaio me te akopono e haere tonu ana, kia mau tonu tēnei taumata mahi pono, me ētahi ake take whakaritenga, pērā i te raupapa whakahaere kaupapa, me te taumata ārahitanga e whakawhiwhia ana e te pukapuka aromatawai, kia mau tonu ki ngā mahinga e whakaata ana i ngā mahi pai o ināianei.

I arotakehia, i whakahoutia te Pukapuka Aroturuki Rāngai i te tau 2003/04.

Ngā Kawenga i raro i te Ture

Ko Te Puni Kōkiri kei te whakahaere i ētahi hanganga ture, ka mutu, ko te Manahautū tonu te tangata e waha ana i aua kawenga. Hei tauira atu, he nui tōna mana e pā ana ki te Wāhanga 11 o te Ture Hanga Hou i te Tari Māori 1989, ki te tautoko i ngā Māori e hiahia ana ki te whakamahi i ētahi pānga whenua Māori kore here hei mahi ahūwhenua.

I raro i te Ture Whenua Māori 1993, he rite tonu ngā wā e whakamahia ana e te Manahautū tōna mana ki te whakawehe i te whenua Māori kore here me te whenua noa hei whenua rāhui Māori. He maha ngā kaupapa e wehea he whenua rāhui Māori, e pā ana ki te marae, ki ngā wāhi tanu tūpāpaku, ki te papa tākaro, ki ngā whenua papai ā-kanohi, me ētahi atu.

I raro i ngā Ture Whakarerekē i te Ture Whenua Rāhui Māori 1997 me 1998, me tuku pānui, me tuku paremata hoki te Manahautū ki ngā tāngata whai pānga me ngā kai tango rīhi whenua e tika ana i raro i te ture. Ka taea e ngā tāngata whai pānga me ngā kai tango rīhi te hari i a rātou paremata ki te Taraipiunara Whakawāriu Whenua; i ērā wā, ka noho ko te Manahautū o Te Puni Kōkiri ki tētahi kā taha o te tēpu.

I tua atu, me tirotiro e te Manahautū kei te hāngai ngā mahi katoa a ngā Poari Kaitiaki Māori ki ngā here o te Ture Poari Kaitiaki Māori 1955, ā, ka āta tirohia ngā whakahaerenga pōti me ngā pūrongo pūtea a ngā Poari nei.

Ngā Ture Paremata he mea whakahaere e Te Puni Kōkiri

- Te Ture Pāoho 1989, Wāhanga 1V A
- Te Ture Kaitiaki Poari Māori o Hauraki 1988
- Te Ture Roto Waikaremoana 1971
- Te Ture Kaitiaki Poari Māori o Maniapoto 1988
- Te Ture Hanga Hou i te Tari Māori 1989
- Te Ture Whanake Hapori Māori 1962
- Te Ture Whare Māori 1935
- Te Ture Whakarerekē Here Whenua Māori me ngā Whakatikatikatanga Kerēme o aua Whenua Māori 1926
- Te Ture Reo Māori 1987
- Te Ture Take Māori 1926-1981
- Te Ture Take Māori 1991
- Te Ture Take Māori 1993
- Te Ture Take Māori (Kaitiaki o Wi Pere) 1994
- Te Ture Take Pūtea Māori 1943-1935
- Te Ture Whenua Rāhui Māori 1955
- Ngā Ture Whakarerekē mo ngā Whenua Rāhui Māori 1997 me 1998
- Te Ture Kaitiaki Hoia Māori 1957
- Te Ture Aratuku Whakaata Irirangi Māori 2003
- Te Ture Poari Kaitiaki Māori 1955
- Te Ture Kaitiaki Māori 1953
- Te Ture mo te Whakahaere i ngā Whenua Māori Whaipānga 1954
- Te Ture mo te Manatū Whanaketanga Māori 1991
- Te Ture mo Orakei 1991
- Te Ture mo te Ngahere o Tarawera 1967
- Te Ture mo te Poari Kaitiaki o Tauranga Moana 1981
- Te Ture mo te Rūnanga o Ngāti Awa 1988
- Te Ture mo te Rūnanga o Ngāti Porou 1987
- Te Ture mo te Rūnanga o Ngāti Whātua 1988
- Te Ture Whenua Māori 1993
- Te Ture mo te Tiriti o Waitangi 1975
- Te Ture mo te Poari Kaitiaki o te Awa o Whanganui 1988

Ngā Rekureihana Ā-ture e whakahaere ana a Te Puni Kōkiri

- Te Whakahau mo te Poari Kaitiaki Māori o Aupouri 1985
- Te Whakahau mo te Poari Kaitiaki Māori o Aupouri 1986
- Nga Ture Ārahi i ngā Komiti Kaitiaki Poraka Whenua Māori o Te Tairāwhiti 1936
- Nga Ture Ārahi i ngā Utu mo te Kōti Whenua Māori 1993
- Nga Tikanga Ture mo te Kōti Whenua Māori 1994
- Nga Ture Ārahi i ngā Whakahau Nohanga Whenua Māori 1994
- Nga Ture Ārahi mo ngā Whenua Rāhui Māori 1994
- Nga Ture Ārahi Pūtea Take Māori 1937
- Nga Ture Ārahi i te Tari Kaitiaki Māori 1954
- Nga Ture Ārahi Whare Māori 1960
- Nga Ture Ārahi mo ngā utu haerere a ngā Kaiwhakawā Kōti Whenua Māori 1960
- Nga Ture Ārahi Whanake Hapori Māori 1963
- Te Whakahau a Te Kōti Whenua Māori (Whai Mana) 1996
- Nga Ture Ārahi i ngā Poari Kaitiaki Māori 1985
- Te Whakahau mo te Kaporeihana o Mawhera 1976
- Te Whakahau mo te Poari Kaitiaki Māori o Maniapoto 2002
- Te Whakahau mo te Poari Kaitiaki Māori o Ngāti Whātua o Orākei 1983
- Te Whakahau mo te Poari Kaitiaki Māori o Ngāti Whātua o Orākei 1990
- Te Whakahau mo te Poari Kaitiaki Māori o Ngāti Whātua o Orākei 1997
- Te Whakahau mo te Kaporeihana o Parininihi ki Waitotara 1976
- Te Whakahau mo te Poari Kaitiaki Māori o Tai Tokerau 1987
- Te Whakahau mo te Poari Kaitiaki Māori o Taranaki 1990
- Te Whakahau mo te Poari Kaitiaki Māori o Te Arawa 1988
- Te Whakahau mo Te Awapuni Moana
- Te Whakahau mo te Rūnanga o Ngāti Awa 1999
- Te Whakahau mo te Rūnanga o Ngāti Porou 1989
- Te Whakahau mo te Rūnanga o Ngāti Porou 1993
- Te Whakahau mo te Poari Kaitiaki Māori o Whakatōhea 1996
- Te Whakahau mo Whakatū Kaporeihana 1977
- Te Whakahau mo te Poari Kaitiaki Māori o te Awa o Whanganui 1996